

EASYkleen Mark 1

Metal marking, etching and plating system



THE ONLY SYSTEM ON THE MARKET TO PLATE AS WELL AS ETCH!



MADE IN AUSTRALIA

The EASYkleen Mark 1 kit can be used on any of the EASYkleen range. It will mark, etch and or plate. Choose the appropriate electrolyte for the job at hand and using the unique roller system to imprint on the mask.

The roller system is the notable difference to others on the market. It enables smoother mask coverage, rather than dragging the electrode over the mask, which can lead to smudging.

The Mark 1 has the ability to both etch or plate, giving added options on more materials and a larger range of colour finishes.

The Patented unique roller system eliminates the stencil from smudging.

Accessories

Cleaning Solutions



Etching Solution
EKM1ESOL-250W
EKM1ESOL-1W



Plating Solution
EKM1CPSOL-250W
EKM1CPSOL-1W



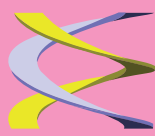
Nickel Plate Solution
EKM1CPSOL-250W
EKM1CPSOL-1W



Contact IWWS for mask/template information.
Mask/templates are made to order.

Part Number	Description
EKM1PW	Easykleen Mark 1 Kit





EASYkleen Mark 1

PT-18 Stenciling System Kit



Etching Stencil options:

Option 1: PT-18 Stenciling System Kit

Enables in-house stencil making on an 18 mm wide tape. Allowing simple stencil making which is perfect for serial numbers, logos up to 18 mm tall and standard “type” marking (name and address).

This unique stencil system can be used to mark/etch or plate stainless with what you need marked at the press of a few buttons once the unit is plugged into your computer via a USB port. The pre loaded software allows you to type what you need on the 18 mm wide mask tape. Plug, play, paint - Etch or Plate.

Option 2: Long Life Stencil (1,000 + Markings)

Great for logo's or brand names that are unique. These are ordered directly with metal science and are made specially, each one is custom made. For this option please contact Metal Science Technologies.

Accessories



Cartridge
18ST



Electrode Guide
18EG

Part Number	Description
PT-18	Stenciling System Kit

