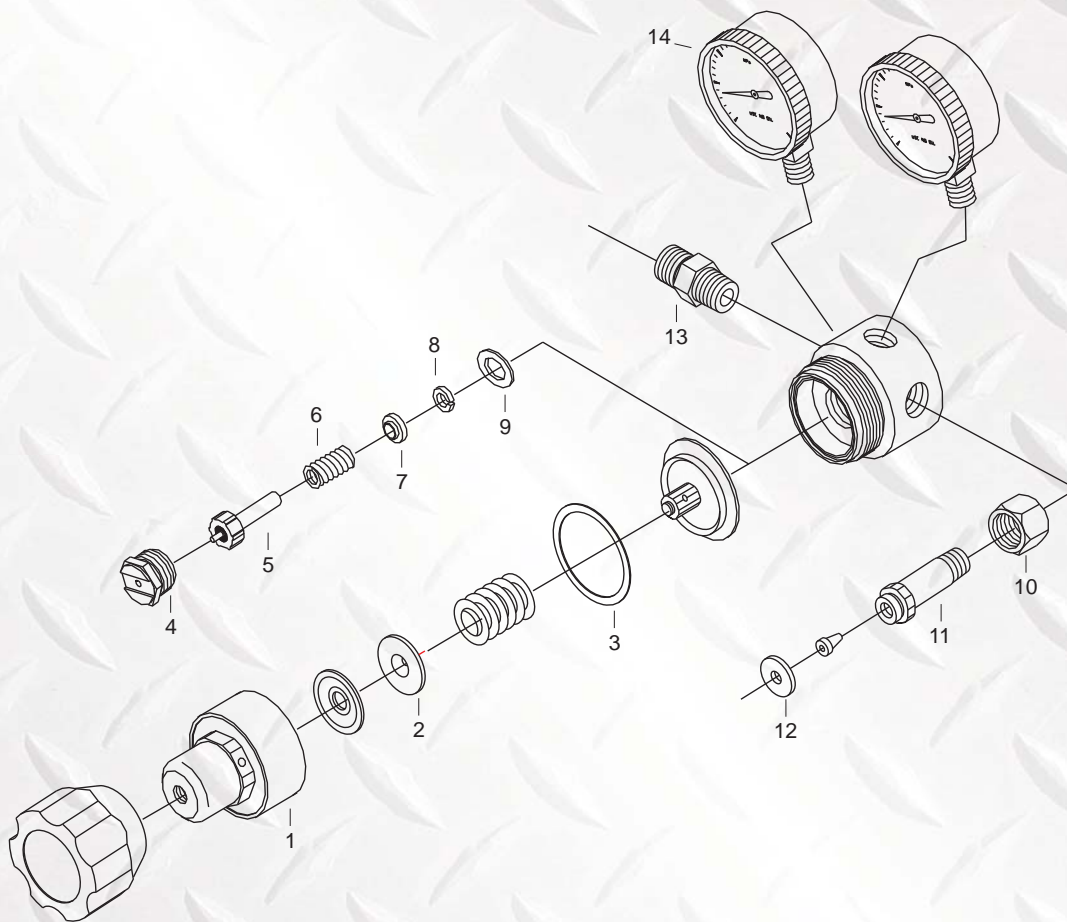


GAS EQUIPMENT

190CR CO² REGULATOR



Part No	Description
1	R190-04 HOUSING CAP
2	R110-06 SPRING BUTTON
3	R110-08 SLIP RING
4	R110-30 NOZZLE
5	R120-83 SEAT ASSEMBLY
6	R110-35 VALVE SPRING
7	R110-36 GLAND
8	R110-37 FRICTION WASHER

Part No	Description
9	R110-38 NOZZLE GASKET
10	R190-57A INLET NUT
11	R190-58A INLET STEM
12	R190-59A WASHER
13	R190-52C OUTLET CONNECTION
14	G20-050CFH FLOW GAUGE R190-01 ADJUSTING HANDLE R120-82 DIAPHRAM ASSEMBLY Y3902 REGULATOR LENS CAP



INDEPENDENT WHOLESALE WELDING SUPPLY

Ph: 02 8834 2400 Fax: 02 8834 2498 Email: iwws@iwws.net Website: www.iwws.net