

MACHINES

Easykleen Machines



- Electropolish stainless steel cleaner
- DC powered
- Transformer driven
- 300 watts
- Designed for light to medium use
- Ideal for fabricators who do light gauges (1-3 mm) Tig work
- Australian designed and made



- Electropolish stainless steel cleaner
- DC powered
- 450 watts
- A faster cleaning action
- Provides amazing polishing & passivating results in minutes
- Eliminates the very costly pickling paste process
- Australian designed and made



- Electropolish stainless steel cleaner
- Inverter driven
- DC only output
- 30-100 amp output
- 100% duty cycle
- Highest corrosion resistance
- Faster than other methods
- Works on Tig, Mig & Stick
- Match any finish 2B to mirror)



- Electropolish stainless steel cleaner
- Inverter driven
- DC only output
- 30-130 amp output
- 100% duty cycle
- Highest corrosion resistance
- Faster than other methods
- Australian designed and made

Part No.	Description	Pur.	Pk
1 EKT101	Easykleen tec brush dc weld machine	1	1
2 EKP101	Easykleen brush plus machine	1	1
3 EKPS10	Easykleen pro s-10 machine	1	1
4 EKPS15	Easykleen pro s-15 machine	1	1

Brushes & Brush Sleeves



Part No.	Description	Pur.	Pk
<i>EKT101 Machine Brushes</i>			
1 EKT105	TEC express brush	1 PK	5
2 EKT106	TEC rapid brush	1 PK	5
3 EKT140	TEC tip brush	1 PK	3
N/S EKTSP7	Brush Sleeve	1 PK	5
<i>EKP101 Machine Brushes</i>			
4 EKP105	Spot brush	1 PK	5
5 EKP106	Craftsman brush	1 PK	5
6 EKP107	Mig brush	1 PK	5
7 EKP108	Master brush	1 PK	5
8 EKP141	Long tip C brush	1 PK	3
9 EKPS17	Craftsman brush sleeve	1 PK	5
10 EKPS18	Mig brush sleeve	1 PK	5
<i>EKPRO S10 Machine Brushes</i>			
11 EKPRO130	Pro-S brush	1 PK	5
12 EKPRO131	Pro Mig brush	1 PK	5
13 EKPRO133	Pro tip brush	1 PK	3
14 EKPS10SP2W	Pro-S silicone sleeve	1	1
<i>EKPRO S15 Machine Brushes</i>			
15 EKPRO130	PRO-S brush	1 PK	5
16 EKPRO131	PRO Mig brush	1 PK	5
17 EKPS15-132	Wide brush 40 mm (1.6")	1	1
18 EKPRO133	Pro tip brush	1 PK	3
19 EKPS15SP2	Brush sleeve silicone	1 PK	5
N/S EKPS15SP33W	Pro brush box kit	1	1

MACHINES

Easykleen Machine Solutions



Part No.	Description	Pur.	Pk
1	EKP102-1	1	1
	EKP102-5	1	1
	EKP102-20	1	1
2	EKP103-1	1	1
	EKP103-5	1	1
	EKP103-20	1	1
3	EKP104-1	1	1
	EKP104-5	1	1
	EKP104-20	1	1
4	MST128	1	1
	MST129	1	1

Easykleen Machine Spare Parts



Part No.	Description	Pur.	Pk
<i>EKT101 Machine Spare Parts</i>			
1	EKT110	1	1
2	EKT112	1	1
<i>EKP101 Machine Spare Parts</i>			
3	EKP110	1	1
4	EKP111	1	1
5	EKP112	1	1
6	EKPSP1W	1	1
7	EKP122	1	1
n/s	EKPSP100W	1	1
n/s	EKPSP101W	1	1
8	EKPS7	1 PK	5
	EKPS2	1	1
9	EKPS4W	1	1
10	TC354	1 PK	5
11	TCSP15W	1	1
12	EKPS11W	1	1
n/s	EKPS20W	1	1
13	TCSP20W	1	1
14	EKPS9W	1	1
<i>EKPRO S10 Machine Spare Parts</i>			
15	EKPS10-140	1	1
n/s	EKPS10SP24W	1	1
n/s	EKPS10SP31W	1	1
n/s	EKPS10SP33W	1	1
n/s	EKPS10-141	1	1
n/s	EKPS10SP3W	1	1
n/s	EKPRO152	1	1
<i>EKPRO S15 Machine Spare Parts</i>			
16	EKPS15-140	1	1
17	EKPS15-141	1	1
n/s	EKPS15SP3W	1	1
n/s	EKPRO152	1	1

MACHINES

Easykleen Etching & Marking kit



Kit includes: Carry case, Handle and lead, Clamp and lead, Electrode guide and Solution.



Part No.	Description	Pur.	Pk
1	EK19KIT Etching & Marking kit	1	1
2	EKM1ESOL-250 Etch solution 250 ml	1	1
	EKM1ESOL-1 Etch solution 1 ltr	1	1
3	EKM1CPSOL-250 Copper plate solution 250 ml	1	1
	EKM1CPSOL-1 Copper plate solution 1 ltr	1	1
4	EKCLW Clamp & Lead	1	1
5	EKHLW Handle & Lead	1	1

Easykleen Feeder & Stencil Printer



Part No.	Description	Pur.	Pk
1	EKEFM6W Easykleen feeder M6 style	1	1
	EKEFM8W Easykleen feeder M8 style	1	1
2	PT-18 Stencil printer	1	1
N/S	EKEFM6TIPW Brush M6 solution feeder tip	1 PK	3
N/S	EKEFM6SFBW Brush M6 solution feeder	1 PK	5
N/S	EK100STW Etch stencil cartridge 100 mm wide	1	1

Mepblitz Machine



The mepBLITz DCi5 mobile electro-polisher has "patented inverter technology" which allows it to deliver up to 150 amps of cleaning speed, three times the speed of its predecessor and by far the fastest machine worldwide. The mepBLITz DCi5 has the ability to use a wide range of electrodes, depending on what the user requires. A range of different sized and shaped solution fed brushes are available, along with large copper electrodes that can be custom made to suit for large area surface polishing.

Part No.	Description	Pur.	Pk
DCi5	DCi5 mobile electro polisher	1	1
MEPI5SP14W	Inverter circuit board	1	1

Easykleen Gondola Display



Includes
 1 x EASYkleen Branded Gondola Display
 1 x Display weld sample
 1 x Brochure Holder and Brochures
 1 x EASYkleen Plus Kit (EKP101)
 1 x EKP-50 Solution 5lt (EKP102-5)
 1 x BLITz Clean Up 5lt (MST129)
 2 x Spot Brush 5 Pack (EKP105)
 2 x Craftsman Brush 5 Pack (EKP106)
 2 x MIG Brush 5 Pack (EKP107)
 2 x Master Brush 5 Pack (EKP108)

Part No.	Description	Pur.	Pk
EK23GD	Gondola	1	1

MACHINES

Mepblitz Machine Solutions



Part No.	Description	Pur.	Pk
1 MST128	Neutraliser 1 ltr	1	1
MST129	Neutraliser 5 ltr	1	1
2 MST131	Neutraliser spray bottle	1	1
3 106MEP	Coolant 1 ltr	1	1
4 MEPI5SP10W	Coolant 1 ltr	1	1
5 153MEP	B50 Polishing solution 5 ltr	1	1
153-20MEP	B50 Polishing solution 20 ltr	1	1

Brushes



Part No.	Description	Pur.	Pk
1 151MEP	P1 Brush	1 PK	5
2 MEPI5DBW	Dipping brush DC-I5	1 PK	5
3 MEPI5M60W	Solution fed brush M60 DC-I5	1	1
4 MEPI5M120W	Solution fed brush M120 DC-I5	1	1
5 MEP160W	Tip brush	1 PK	3
6 156MEP	Turbo Brush	1 PK	5
7 MEPI5STDAW	Standard brush adaptor	1	1

Mepblitz Machine Spare Parts



Part No.	Description	Pur.	Pk
1 MEPI5DIPW	Dipping handle 5 m lead DC-I5	1	1
2 MEPI5MSHW	M-Style handle	1	1
3 MEPI5SP41	M-Style handle 2 piece	1	1
4 MEPSP46W	M-Style conduit fitting	1	1
5 104MEP	Polishing boot	1 PK	20
6 108MEP	Electrode flat extension	1	1
7 109MEP	Flat extension boot	10	10
8 111MEP	Alignment tool	1	1
9 112MEP	O'ring dura	1 PK	3
10 113MEP	Pencil round extension electrode	1	1
11 114MEP	Pencil round extension boot	10	10
12 115MEP	O'ring fluorocarbon/viton	1 PK	3
13 136MEP	Pinch tube clips	1	1
14 152MEP	Bristle sleeve	1 PK	5
15 MEPSP3W	Conductor extender	1	1
16 MEPSP4D	Torch head	1	1
17 MEPSP7W	Micro switch	1	1
18 MEPSP14W	Conductor sleeve	1	1
19 MEPSP30W	DCI5 aerosol shield	1	1
20 MEPSP44W	Power Lead	1	1
21 MEPSP49W	5 Pin plug	1	1
22 MEPI5SP39	Coupling 3D printed	1	1
23 MEPI5SP51	Silicon tube stem M-Style	1	1
24 MEPI5SP56	Internal M-Style conductor	1	1
25 MEPI5SP53W	Coupling Guide	1	1
n/s MEPI5SP13	Conduit Gland	1	1
n/s MEPI5SP54	Conductor sleeve silicon M-Style	1	1
n/s MEPI5SP12W	Front panel silicone tube	1	1
n/s MEPI5SP52W	Switch	1	1
n/s MEP15SP65W	IMX 1/4 inch tube & 90° elbow	1	1
n/s MEP15SP67W	Solution line bottle 1 ltr	1	1
n/s MEPI5SP68W	Coolant line bottle 1 ltr	1	1

MACHINES

Mig190 Machine

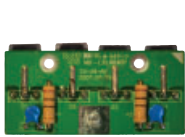


1

- DC lift Tig
- DC MMA
- Gas/gasless Mig
- Spool size 5 kgs
- Euro connect Mig torch
- VRD
- Current adjustment Range MMA: 10-160 amps
- Current adjustment Range Mig: 10-190 amps
- Voltage adjustment Range Mig: 15.5>23 volts
- No load voltage: 53 volts
- Rated duty cycle
- (MMA welding) 40°C: 35% @ 160 amps
:100% @ 95 amps
- (MIG welding) 40°C : 35% @ 175 amps
: 100% @ 103 amps



2



3



4



5



6



7



8



9

Part No.	Description	Pur.	Pk
1	IWS190 Machine, lead kit, torch	1	1
	IWS190R Machine, lead kit, torch reg, & gas hose	1	1
2	BSA190 Spindle adaptor 190	1	1
3	B02039 PC board twice inverter 190	1	1
4	B03068 PC board filter Mig 165/190	1	1
5	10000742 PC board 190 power source	1	1
6	30MM RETAIN Retaining cap 30 mm	1	1
7	10041314 Wire feeder bracket (non geared)	1	1
8	10007296 Fan 24 volt	1	1
9	10016684 Door hinge Mig 190	1	1
N/S	10013391 Rear panel	1	1
N/S	10001362 Solenoid	1	1

Mig 210C Machine



1

- Tig lift arc
- VRD
- Spool gun ready 4 pin
- Input voltage: AC230 ± 15% single phase 50/60 hz
- Rated input current: 33 amps
- Rated power supply capacity: 7.5 kva
- MMA welding current range: 10-200 amps
- MIG current range: 25-200 amps
- MIG voltage range: 11-27 volts
- No load voltage: 52 volts
- Wire feeder speed range (m/min): 1.5-16
- Electrode diameter applicable: 0.6/0.8/0.9/1.0 mm
- Duty cycle I_{max} (40°C): 35%
- Duty cycle 100% (40°C): 120 amps
- Duty cycle 60% (40°C): 155 amps
- Efficiency (%): 85
- Power factor: 0.75
- Protection class: IP21S
- Insulation class: F
- Size: 880 x 296 x 616 mm
- Weight: 45 kgs



2



3



4



5



6



7



8

Knurled Flux Cored

U Groove Soft Wire

V Groove Solid Wire

Part No.	Description	Pur.	Pk
1	IWS210C Machine, lead kit & torch	1	1
	IWS210CR Machine, lead kit, torch, reg & gas hose	1	1
2	S081400 Spool adaptor 200 - 300 mm (8" - 12")	1	1
3	10001870 Fan	1	1
4	10007302 Fan 240VAC 120 x 170 mm (5" x 7")	1	1
5	10001837 Fan 220VAC early model	1	1
N/S	10000478 Filter Board	1	1
<i>Feed Rollers</i>			
6	0.8-0.9F35/25 0.8 - 0.9 mm (.030"- .035")	TBC	TBC
	0.9-1.0F35/25 0.9 - 1.0 mm (.035"- .040")	TBC	TBC
	1.0-1.2F35/25 1.0 - 1.2 mm (.040"- .045")	TBC	TBC
	1.2-1.6F35/25 1.2 - 1.6 mm (.045"- .062")	TBC	TBC
	JSF0.9-1.2 0.9 - 1.2 mm (.035"- .045") 35/25	1	1
	JSF1.0-1.2 1.0 - 1.2 mm (.040"- .045") 35/25	1	1
7	0.6-0.8U35/25 0.6 - 0.8 mm (.025"- .030")	TBC	TBC
	JSU0.8-1.0 35/25 0.8 - 1.0 mm (.030"- .040")	1	1
	0.9-1.0U35/25 0.9 - 1.0 mm (.035"- .040")	TBC	TBC
	JSU0.9-1.2 35/25 0.9 - 1.2 mm (.035"- .045")	1	1
	1.0-1.2U35/25 1.0 - 1.2 mm (.040"- .045")	TBC	TBC
	JSU1.2-1.6 35/25 1.2 - 1.6 mm (.045"- .062")	1	1
8	0.6-0.8V35/25 0.6 - 0.8 mm (.025"- .030")	TBC	TBC
	0.8-0.9V35/35 0.8 - 0.9 mm (.030"- .035")	TBC	TBC
	0.9-1.0V35/25 0.9 - 1.0 mm (.035"- .040")	TBC	TBC
	JSV0.9-1.2 35/25 0.9 - 1.2 mm (.035"- .045")	1	1
	1.0-1.2V35/25 1.0 - 1.2 mm (.040"- .045")	TBC	TBC
	JSV1.2-1.6 35/25 1.2 - 1.6 mm (.045"- .062")	1	1

MACHINES

Jasic Sub Arc Machine



- MMA welding.
- SAW welding.
- Carbon arc welding
- CC/CV
- 20KHz inverter frequency.
- Magnetic loss reduction, to ensure welding efficiency and power saving effect.
- Leading control mode.
- Excellent protection circuit.
- Automatic retracting arc ignition circuit.
- PWM wire feeding control.
- Arc voltage compensation function.
- Current range 160-1000
- 100% duty cycle @ 40°C

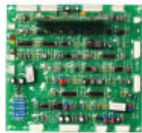


The WF-33 carriage is available for all S.A.W. The wire feed unit ensures an even stable wire feed speed and accurate travel speed.

- Rugged mast and frame
- Heavy duty cross slides
- Digital displays
- Interconnecting cable 15 m (50 ft)



3



4



5



6



7



8



9



10



11

Part No.	Description	Pur.	Pk
1	JS1000	J58 Machine power source only	1 1
2	JSWF-33	Tractor sub arc	1 1
n/s	M3080A	Submerged arc package, includes power source MK1, trolley and interconnecting cable	1 1
3	B04222	PC board main control board JS1000	1 1
4	10000624	Control Board	1 1
5	FILLET GUIDE	Fillet guide	1 PR 2
6	10029860	3 - 4 mm (1/8" - 5/32") 2 required	1 1
	10029872	2 - 2.8 mm (0.08" - 0.11")	1 1
	10029313	4.2 - 5 mm (0.17" - 3/16")	1 1
7	10016724	Spool holder	1 1
8	C17029	Selection switch	1 1
9	10029948	Tip shaft	1 1
10	J31025	Track	1 1
11	10029942	Front Y assembly	1 1
n/s	10056680	Motor 150 w 6000 rpm	1 1

Mig 350C Machine



1

- Tig lift arc
- VRD
- Input voltage: 415 volts 3 Phase 50/60 hz
- Rated input current (A): 22.8
- Rated power supply capacity: 15 kva
- MMA welding current range: 20-350 amps
- MIG current range: 50-350 amps
- MIG voltage range: 15-38 volts
- No-load voltage: 59 volts
- Wire feeder speed range (m/min): 1.5-15
- Electrode diameter applicable: 0.8/0.9/1.0/1.2 mm
- Duty cycle I_{max} (40 °C): 40%
- Duty cycle 100% (40 °C): 220 amps
- Duty cycle 60% (40 °C): 280 amps
- Efficiency (%): 85
- Power factor: 0.93
- Protection class: IP21S
- Insulation class: F
- Size (mm): 900 x 400 x 670 mm
- Weight: 51 kgs



2



3



4



5



6



7

Part No.	Description	Pur.	Pk
1	IWS350C	Machine, lead kit & torch	1 1
	IWS350CR	Machine, lead kit, torch, reg & gas hose	1 1
2	S081400	Spool adaptor 200 - 300 mm	1 1
3	10021668	Euro block	1 1
4	10037160	Gear main drive	1 1
5	10038712	Wire Feeder drive gear	1 1
6	JSRETAINSCREW	Drive roller retaining screw	1 1
7	JSRETAINWASHER	Drive roller retaining washer	1 1
n/s	10052616	Fan 230v	1 1

MACHINES

Tig 200P Machine



1

- Latest IGBT inverter technology
- Digital weld program sequence control
- DC Tig
- HF Arc ignition (prevents tungsten inclusion & tungsten damage)
- Adjustable pulse frequency 0.5 - 200Hz
- Peak current Base current Pulse width adjustment
- 2T/4T Trigger & spot time adjustment
- Start & finish current adjustment
- Pre & post gas flow adjustment
- Up & down slope adjustment
- Remote torch Amp control
- VRD (Voltage Reduction Device)
- MMA
- Arc ignition
- Arc force
- Thermal overload protection



2

Part No.	Description	Pur.	Pk
1	IWS200P Machine, lead kit & torch	1	1
	IWS200PR8MF Machine, lead kit, torch 8m & reg	1	1
2	30000103 Knob assembly	1	1
n/s	10004684 2 Pin panel receptacle	1	1
n/s	10004685 5 Pin panel receptacle	1	1

Water Recirculator



1

- Ventilated rugged metal cabinet
- Carry handle
- Water level indicator
- Fan cooled radiator
- Quick connect input and output water connections



2



3



4

- Deluxe water cooler designed for torches up to 500 amps* - industrial grade.
- All stainless steel construction - 11 Litre tank.
 - Positive displacement bronze rotary vane pump.
 - Efficient aluminum fin - copper coil radiator.
 - 12,000 BTU/hr. rated cooling capacity for welding equipment up to 500 amps.*

Part No.	Description	Pur.	Pk
1	IWSWC Jasic water cooler	1	1
2	BD-802231 Quick connect female panel red	1	1
3	BD-802232 Quick connect female panel blue	1	1
4	C35-1 Water cooler 120v 11 litre	1	1
	C35-2 Watercooler 240v 11 litre	1	1

Digipuls II



- Pulse Mig
- Process available: MMA, short arc, speed short arc, pulse, spray modal
- Three-phase primary voltage: (+15% - 20%) 400 volt
- Frequency: 50/60 hz
- Current consumption Digipuls 420: 31 amps
- No load voltage: 86 volts
- Duty cycle 60% @ 40°C
- Digipuls 420: 420 amps
- Duty cycle 100% @ 40°C
- Digipuls 420: 350 amps
- Dimensions: 970 x 740 x 130
- Weight: 37 kgs

Part No.	Description	Pur.	Pk
W000274838	Digipuls II 420	1	1
W000275267	Wire feeder digipuls dvu p600	1	1

Weldycar



1

Weldycar carriages are portable independent torch carriages with four driving wheels. Specially designed for mechanising semi automatic welding in flat, sloping plane or vertical plane positions. Optional osci-weldy linear oscillator and pendular oscillator. Battery operated



2

The pendular oscillator ensures torch oscillation at adjustable speed and amplitude.



3

The osci-weldy linear oscillator for the weldycar provides the welding torch with a programmed oscillation movement.

Part No.	Description	Pur.	Pk
1	W000401719 Weldycar v3	1	1
2	W000315474 Weldycar oscillator	1	1
3	W000276068 Osci-weldy for weldycar	1	1

MACHINES

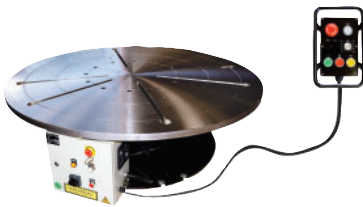
Opus 560 Multiprocess



- Inverter arc control technology.
- Inductance electric control.
- Automatic voltage adjustment to set input voltages variations.
- Automatic fan operates only when required.
- Digital voltmeter and ammeter.
- Light and portable equipment.
- Welding process selector.
- 120 volts, AC duplex receptacle.

Part No.	Description	Pur.	Pk
302-372	Opus 560 Multiprocess Machine	1	1

Floor Turntable FT20000-4



- 9071 kg capacity
- 1651 mm diameter table
- 0.1 to 1.0 rpm rotation speed
- 2 H.P rotational motor
- 800 amp rotary ground
- 440 volt 3 phase model
- High frequency protected
- Standard hand control pendant
- Shipping weight 1270 kgs

Part No.	Description	Pur.	Pk
FT20000-4	440 volt Floor turntable	1	1

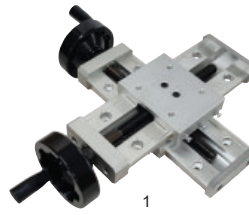
XRS Slide



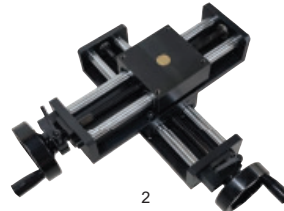
- XRS OSCILLATOR includes
- IWO-1S linear oscillator haed & control
 - 20 cm (8") vertical torch adjustment
 - Dual angle adjustment (x & y axis)
 - 68 cm (27") horizontal adjustment
 - 83 cm (33") total reach
 - Swivel base
 - Removable 20 cm (8") riser
 - Pre drilled base mount
 - 20 cm (8") manual cross slide
 - 2 mounting clamps

Part No.	Description	Pur.	Pk
XRS OSCILLATOR	Weld oscillator & slide assy	1	1
XRS-KIT	Slide kit 5 inch	1	1
XRS	Torch holder only	1	1

Cross Slide



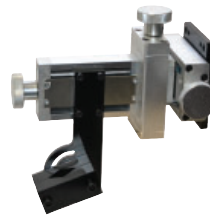
- Travel: 12.7 cm (5-7/8")
- Slide adjustment: Manual hand wheel
- Load Capacity: 40 kgs @ 10 cm (4") center of gravity
- Aluminum construction
- Length of slide: 25.4 cm (10-3/4")
- 16 mm (5/8") dia drive screw
- 8 Pre drilled holes



- Travel: 17.78 cm (7-7/8")
- Slide adjustment: Manual hand wheel
- Integrated slide lock
- Load Capacity: 100 kgs @ 10 cm (4") center of gravity
- Steel construction
- Length of slide: 33 cm (13-1/4")
- 16 mm (5/8") dia drive screw
- 4 Pre drilled holes

Part No.	Description	Pur.	Pk
1 AFCS1500	AF Cross Slide 150 mm 40 kg capacity	1	1
2 AFCS200HD	AF Cross Slide 200 mm 100 kg capacity	1	1

Welding Slide



- Adjustment: 47 mm x 47 mm x 47 mm (LxWxH)
- Slide Adjustment: Manual hand wheel
- Torch Angle Adjustment: 90°
- Torch Diameter: 15 mm - 34 mm
- Torch Clamp: V-Block
- Load Capacity: 4.5 kgs
- Weight: 1.5 kgs

Part No.	Description	Pur.	Pk
WCS-222	3 Way torch adjustment slide w/ torch angle adjustment	1	1
WCS-2	1 Way torch slide w/ mount	1	1
WCS-222-3	Torch holding block std	1	1
WCS-222-6	Torch mounting plate	1	1
AFRTC	Rotation slide & torch clamp	1	1
AFATH	Adjustable Torch Holder	1	1

Torch Stand

- Manually adjustable torch stand
- Extruded aluminium construction
- Lockable casters included for easy movement
- Weight: 31.7 kgs (70 lbs.)



MAST

- Hand wheel adjustment (Worm gear provides anti-fall protection)
- 1.16 m (46") Vertical travel
- 1.5 m (60") Max. Clearance under boom

BOOM

- Hand wheel adjustment
- 1.16 m (46") Horizontal travel
- 1.5 m (50") of reach
- Drilled and tapped mounting plate
- Dual swivel adjustable V-Block mount (included)
- Drilled and tapped holes for Profax WCS-222 (Optional)
- 11 kgs (25 lbs.) Maximum load capacity

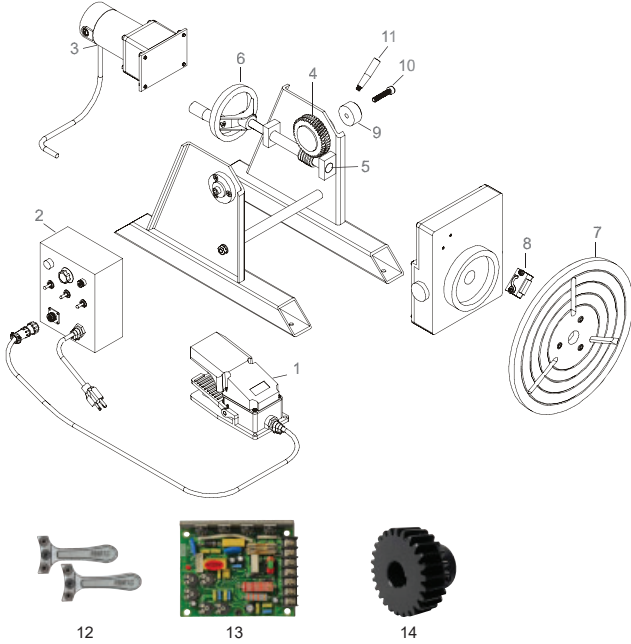
Part No.	Description	Pur.	Pk
WTS-44	Torch stand 0.3 x 0.3 m (4 x 4 ft)	1	1

MACHINES

Welding Positioner WP250-2



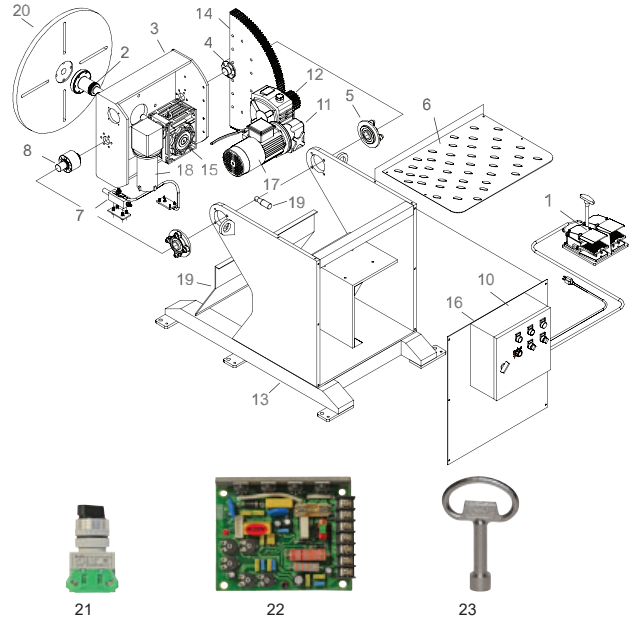
- 340 mm diameter table
- 0 to 5.5 rpm rotation speed
- Manual tilt adjustment
- 240 volt
- 0 to 90° tilting angle
- High frequency protected
- Standard w/ foot control switch
- Shipping weight 51 kgs



Welding Positioner WP500-2



- 490 mm diameter table
- 0.4 - 4 rpm rotation speed
- Power tilt adjustment
- 230 volt
- 0 to 135° tilting angle
- High frequency protected
- Standard fwd./rev. foot control
- Shipping weight 263 kgs



Part No.	Description	Pur.	Pk
WP250-2	240 volt 113 kgs (vertical) 200 kgs (horizontal)	1	1
1	CFS-302 Foot control switch	1	1
2	PX9912 Control box complete	1	1
3	PX6998 Motor	1	1
4	PX9914 Worm gear	1	1
5	PX9915 Shaft, gear and bushing assembly	1	1
6	PX9916 Hand wheel	1	1
7	PX9917 Turn table	1	1
8	PX9918 Grounding brush & holder	1	1
9	PX9926 Tilt lock	1	1
10	PX9927 Tilt lock securing bolt	1	1
11	PX9928 Tilt lock handle	1	1
12	PX7189 Handle & screw suits WPC11	1	1
13	PX9978-2 Drive board 220 volt	1	1
14	PX9919 Main gear, small	1	1
n/s	PX7176 Switch on/off	1	1
n/s	PX7190 Main PC board	1	1
n/s	PX9485 Transformer AUX	1	1
n/s	PX9918K Ground kit	1	1
n/s	WPP21050 Table shaft assembly	1	1
n/s	WPP21094 Worm gear tilt lock assembly	1	1
n/s	PXHP-ROF Hand Pendant	1	1

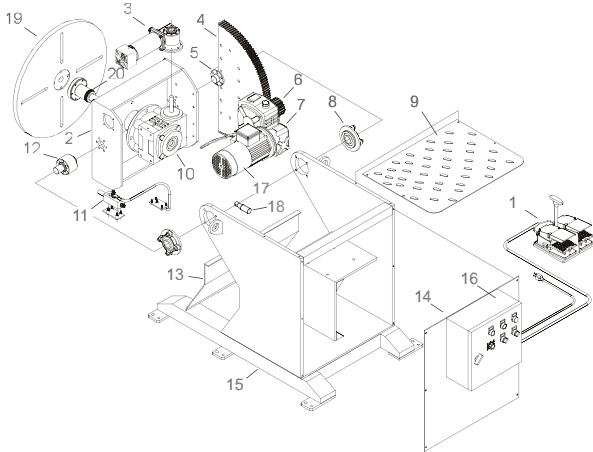
Part No.	Description	Pur.	Pk
WP500-2	230 volt 227 kgs (vertical) 409 kgs (horizontal)	1	1
1	CFS-404 Dual foot pedal assembly	1	1
2	PX7000 Table shaft	1	1
3	PX7001 Tilt base	TBC	TBC
4	PX7002 Tilt gear shaft	TBC	TBC
5	PX7003 Tilt bearing	1	1
6	PX7005 Top	1	1
7	PX7006 Table ground brush & holder	TBC	TBC
8	PX7007 Tilt shaft	1	1
9	PX7010 Cover plate rear	1	1
10	PX9955 Control box complete	1	1
11	PX9956 Tilt gear box	1	1
12	PX9957 Pinion gear	1	1
13	PX9958 Base	TBC	TBC
14	PX9959 Tilt gear	1	1
15	PX9960 Table gear box	1	1
16	PX9991 Cover plate front	1	1
17	PX9994 Motor tilt	1	1
18	PX9995 Table motor	1	1
19	PX9996 Limit switch	1	1
20	PX9997 Table	1	1
21	PX9973 Switch on/off	1	1
22	PX9978-2 Drive board 220 volt POS	1	1
23	PXWPP21045 Key, control box triangle	1	1
n/s	PX9960-LS Low speed gearbox	1	1
n/s	PX9975 Emergency stop button	1	1
n/s	PX9976 Emergency stop box	1	1
n/s	PX9967 Fuse main power 10a	1	1
n/s	PX9984 PC board fuse 10a 5 x 20 mm	1	1
n/s	PXHP-ROF Hand Pendant	1	1

MACHINES

Welding Positioner WP1000-2



- 622 mm diameter
- 0.2 to 2 rpm rotation speed
- 240 volt
- 0 to 135° tilting angle
- High frequency protected
- Standard fwd./rev. foot control
- Shipping weight 544 kgs



Part No.	Description	Pur.	Pk
WP1000-2	240 volt 454 kgs (vertical) 795 kgs (horizontal)	1	1
1	CFS-404 Foot switch	1	1
2	PX7009 Tilt base	TBC	TBC
3	PX7012 Table motor	1	1
4	PX7013 Tilt gear	TBC	TBC
5	PX7015 Tilt shaft	1	1
6	PX7016 Pinion gear	1	1
7	PX7017 Tilt gear box	1	1
8	PX7018 Tilt bearing	1	1
9	PX7020 Top cover	1	1
10	PX7022 Table gearbox	1	1
11	PX7023 Table ground	1	1
12	PX7024 Tilt shaft	1	1
13	PX7025 Cover plate rear	1	1
14	PX7027 Front cover	1	1
15	PX7028 Base	TBC	TBC
16	PX9955 Control box complete	1	1
17	PX9994 Motor tilt	1	1
18	PX9996 Limit switch	1	1
19	PX9998 Table	1	1
20	PX9999 Table shaft	1	1
21	PX9973 Switch on/off	1	1
22	PXWPP21045 Key, control box triangle	1	1
n/s	PX9984 PC Board fuse 10A 5 x 20 mm (3/16" x 13/16")	1	1
n/s	PX9967 Fuse, main power 10A	1	1
n/s	PX9975 Emergency stop button	1	1
n/s	PX9976 Emergency stop box	1	1

Welding Positioner WP2000-4



- 900 mm diameter table
- .2 to 1.2 rpm rotation speed
- 3 phase model
- 0 to 135° tilting angle
- High frequency protected
- Standard hand control pendant
- Shipping weight 746 kgs

Part No.	Description	Pur.	Pk
1	WP2000-4 415 volt 909 kgs (vertical) 1590 kgs (horizontal)	1	1
n/s	WPP21041 Table shaft	1	1
n/s	WPP21071 Hand pendant replacement	1	1

Welding Positioner WP6000-4



- 1200 mm diameter table
- 1 to 1.2 rpm rotation speed
- 440 volt 3 phase model
- 0 to 135° tilting angle
- High frequency protected
- Standard hand control pendant
- Shipping weight 1236 kgs

Part No.	Description	Pur.	Pk
WP6000-4	440 volt 2721 kgs (vertical) 4318 kgs (horizontal)	1	1

Welding Positioner WP10000-4



- 1498 mm diameter table
- .06 to .6 rpm rotation speed
- 440 volt 3 phase model
- 0 to 135° tilting angle
- High frequency protected
- Standard hand control pendant
- Shipping weight 2812 kgs

Part No.	Description	Pur.	Pk
WP10000-4	440 volt 4535 kgs (vertical & horizontal)	1	1

MACHINES

Chucks for Welding Positioner



1

- Low profile
- Self centering
- Reversible jaws
- Easy mounting



2

- 3 jaw self centering
- Reversible jaws
- Easy mounting



3

- Self centering
- Reversible jaws
- Easy mounting



4

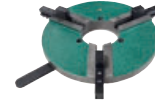
Part No.	Description	Pur.	Pk
1	WPC11 Chuck 3 jaw WP250-2	1	1
2	PXWPC-6 Positioner chuck 158 mm dia. Suits WP250-2	1	1
	PXWPC-12 Positioner chuck 317.5 mm dia. Suits WP500-2, WP1000-2	1	1
	PXWPC-16 Positioner chuck 400 mm dia. Suits WP500-2, WP1000-2, WP2000-4	1	1
	PXWPC-20 Positioner chuck 498.5 mm dia. Suits WP1000-2, WP2000-4, WP6000-4	1	1
	PXWPC-25 Positioner chuck 628 mm dia. Suits WP2000-4, WP6000-4	1	1
n/s	PXWPC-12-4 Key for PXWPC-12	1	1
3	WPG-22 Gripper 501 mm dia. Suits WP500-2, WP1000-2, WP2000-4	1	1
	WPG-26 Gripper 628 mm dia. Suits WP1000-2, WP2000-4, WP6000-4	1	1
	WPG-34 Gripper 768 mm dia. Suits WP2000-4, WP6000-4	1	1
4	WPG-64 Gripper 1651 mm dia. Suits WP1000-4	1	1

Welding Positioner Arcforce



2

The AFP50 Welding positioner grips and rotates the work piece setting up ergonomic working posture during welding, machining and assembly of work pieces for the operator and providing faster and more efficient process.



3

Part No.	Description	Pur.	Pk
1	AFP50 Welding positioner	1	1
2	AFP50FS Foot control	1	1
3	AFC200/P50 200 mm Chuck	1	1
	AFC300/P50 300 mm Chuck	1	1

MACHINES

Turning Roll TR2000-2



- Includes 1 drive & 1 idler
- 38 mm - 406 mm diameter
- 0 - 1905 mm (0 - 75") ipm rotation speed
- 50.8 mm x 254 mm rubber wheels
- High frequency protected
- Foot control w/ 3.6 m cord
- Adjustable drive tension
- Shipping weight 66 kgs
- Additional idler rolls available

Turning Roll TR5000-2

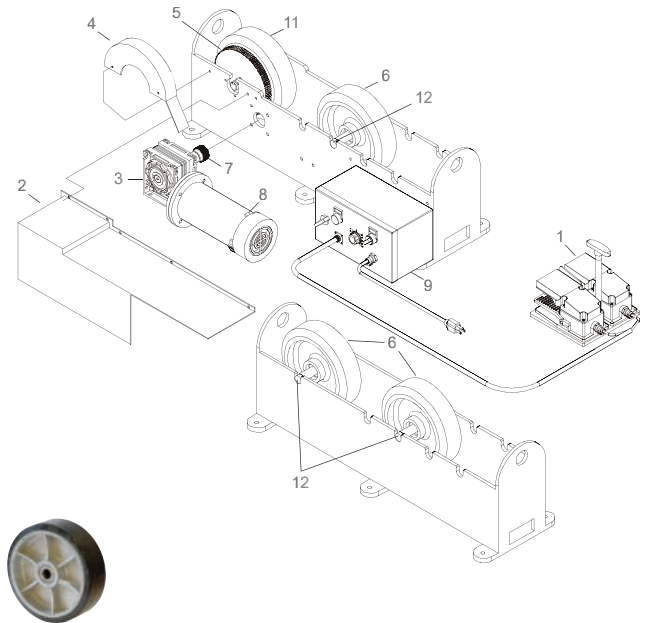
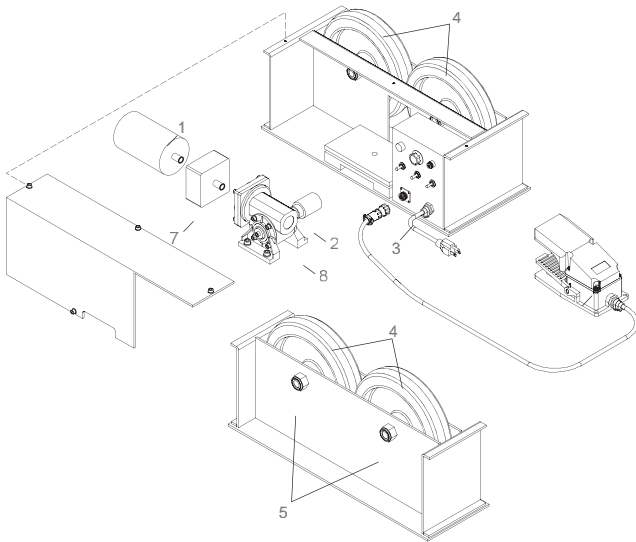


- Includes 1 drive & 1 idler
- 100 mm - 1200 mm diameter
- 0 - 127 mm (0 - 5") rpm rotation speed
- High frequency protected
- Standard with forward/reverse foot control
- Shipping weight 195 kgs
- Additional idler rolls available

See page 415
for spare parts

Part No.	Description	Pur.	Pk
1	TR2000-2	230 volt 907 kgs capacity	1 1
2	IR-1000	Idler 454 kgs	1 1

Part No.	Description	Pur.	Pk
1	TR5000-2	230 volt 2272 kgs capacity	1 1
2	IR-2500	Idler roll 1136 kgs additional suits TR5000-2	1 1

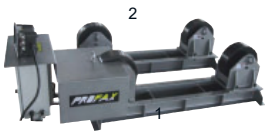


Part No.	Description	Pur.	Pk
1	PX6998	Motor, 65 watt, 1800 RPM	1 1
2	PX9921	Friction roll	1 1
3	PX9912	Control unit	1 1
4	PX9922	Roller wheel	1 1
5	PX9923	Axle	1 1
6	CFS-302	Foot control switch	1 1
7	PXWPP21083	Gearbox, primary reduction 5:1	1 1
8	PXWPP21084	Gearbox, 90 degree reduction 30:1	1 1

Part No.	Description	Pur.	Pk
1	CFS-404	Foot control switch	1 1
2	PX9933	Motor cover	1 1
3	PX9934	Gear box	1 1
4	PX9935	Gear cover	1 1
5	PX9936	Power wheel gear	1 1
6	PX9962	Roller wheel	1 1
7	PX9963	Pinion gear	1 1
8	PX9964	Motor	1 1
9	PX9965	Control box	1 1
11	PX7029	Power wheel	TBC TBC
12	PX7030	Idler wheel shaft	TBC TBC
13	PX9962-I	Idler roll	1 1
	PX9962-D	Driven roll	1 1
n/s	PX9995	Motor table	1 1
n/s	PX9934-LS	Gearbox low gear	1 1
n/s	CFS404INIST-WP20	Installation kit for CFS-404 foot control	1 1

MACHINES

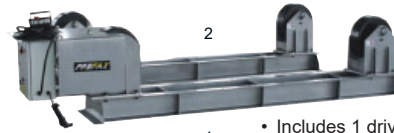
Turning Roll TR10000-2



- Includes 1 drive & 1 idler
- 304 mm - 1727 mm diameter
- 0 - 1143 mm (0 - 45") ipm rotation speed
- 4535 kg capacity (1 drive / 1 idler max 2267 kg each)
- 6803 kg rotating capacity w/ additional idler
- Hand pendant control w/ 7.5 m (25') cord (24V)
- Shipping weight 326 kgs
- Additional idler rolls available

Part No.	Description	Pur.	Pk
1	TR10000-2 230 volt 4535 kgs	1	1
2	IR-5000 Idler roll 2267 kgs additional suits TR10000-2	1	1
n/s	WPP21001 Hand pendant w/ cord	1	1
n/s	WPP21067-2 Motor controller DC 220V PC Board	1	1

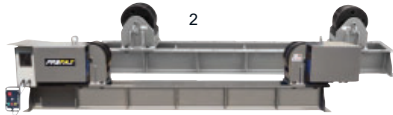
Turning Roll TR20000-2



- Includes 1 drive & 1 idler
- 508 mm - 3962 mm diameter
- 0 - 1219 mm (0 - 48") ipm rotation speed
- 9071 kg capacity (1 drive / 1 idler max 4535 kg each)
- 13607 kg rotating capacity w/ additional idler
- Hand pendant control w/ 7.5 m (25') cord (24V)
- Shipping weight 598 kgs
- Additional idler rolls available

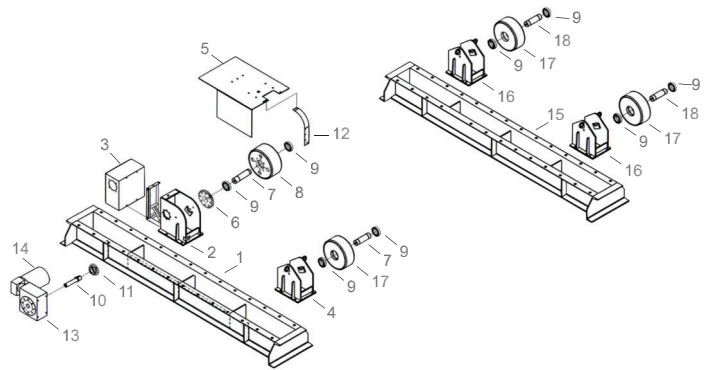
Part No.	Description	Pur.	Pk
1	TR20000-2 230 volt 9071 kgs	1	1
2	IR-10000 Idler 4535 kgs additional suits TR20000-2	1	1
n/s	WPP21067-2 Motor controller DC 220V PC Board	1	1

Turning Roll TR40000-4



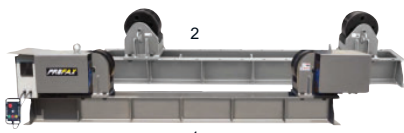
- Includes 1 drive & 1 idler
- 508 mm - 4876 mm diameter
- 152 - 1625 mm (6 - 64") ipm rotation speed
- 20 ton capacity (1 drive/1 idler max.)
- 30 ton rotating capacity w/ additional idler
- 152 mm x 342 mm wheels
- Hand pendant control w/ 7.5 m (25') cord (24V)
- Additional idler rolls available

Part No.	Description	Pur.	Pk
1	TR40000-4 440 volts 18,143 kgs (20 ton)	1	1
2	IR-20000 Idler roll 9071 kgs additional suits TR40000-4	1	1



Part No.	Description	Pur.	Pk
2	WPP21018 Wheel base (power) (left)	1	1
3	WPP21005 Control box	1	1
4	WPP21019 Wheel base (power) (right)	1	1
5	WPP21020 Cover (left)	1	1
6	WPP21021 Gear (big)	1	1
7	WPP21022 Wheel shaft (power)	2	2
8	WPP21023 Wheel (power)	1	1
9	WPP21024 Bearing	8	8
10	WPP21025 Shaft (gearbox)	1	1
11	WPP21026 Gear (small)	1	1
12	WPP21027 Metal band	1	1
13	WPP21028 Gearbox	1	1
14	WPP21029 Motor	1	1
16	WPP21030 Wheel base (idle)	2	2
17	WPP21031 Wheel (idle)	3	3
18	WPP21019-1 Wheel shaft (idle)	2	2

Turning Roll TR60000-4



- Includes 1 drive & 1 idler
- 508 mm - 4876 mm diameter
- 152 - 1473 mm (6 - 58") ipm rotation speed
- 30 ton capacity (1 drive/1 idler max.)
- 45 ton rotating capacity w/ additional idler
- 152 mm x 342 mm wheels
- Hand pendant control w/ 7.5 m (25') cord (24V)
- Additional idler rolls available

Part No.	Description	Pur.	Pk
1	TR60000-4 440 volts 27,215 kgs (30 ton)	1	1
2	IR-30000 Idler roll 13,607 kgs additional suits TR60000-4	1	1

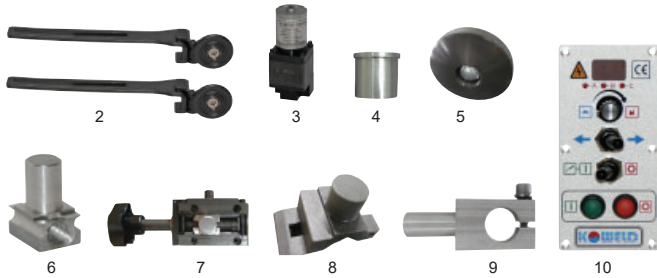
MACHINES

Fillet Carriage



1

- Fillet stitch & continuous travel carriage.
- Light weight.
- Minimised gear backlash offers various constant speed/adjustable controls.
- Climbs up a 1900 mm incline.
- Magnet release handle for easy mount and dismount.



Part No.	Description	Pur.	Pk
1	CS-71 Multi fillet carriage	1	1
2	GAA7-23 Guide arm assembly pair left and right	1	1
3	CS71DCBLM DC brush-less motor	1	1
	CS71GM Geared motor	1	1
4	CS7-13 Angle slide bush	1	1
5	CS7-32 Clamp fixed knob	1	1
6	CS71-7/30 Slide support	1	1
7	CS71-YS-01 Y slide assembly	1	1
8	CS7H-34 Torch clamp (D)	1	1
9	CS7H-35-1 Torch clamp bracket	1	1
10	GMPCB-1030 PC board main	1	1
N/s	TC-CS01 Torch clamp assembly	1	1
N/s	CS-71GARA Guide arm & roller assembly	1	1

Carriage Dual Sides



1

- Minimised gear backlash offers various constant speed/adjustable controls.
- Limit switches stop carriage travel and welding.
- Crater fill at the beginning and end of welding.
- Stitch and Continuous welds and the travel speed in cm/min or inch/min
- Torch holder accepts both straight and bent necks.



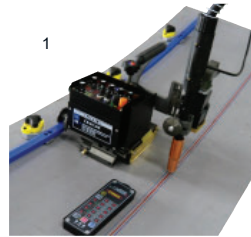
2



- Dual side fillet welding
- Travelling by roller along to top of Flange of angler, rail less type and avoiding obstacles near to I-Bar.
- Minimum angle size is 75 mm and 25 mm height of materials available
- Crate time is adjustable and easy by operator.

Part No.	Description	Pur.	Pk
1	CS-231 Carriage dual sides fillet	1	1
2	GMPCB-1035 Main PCB	1	1
3	CS-241 Carriage dual sides fillet	1	1

Multi Position Carriage



1

- Carriage travels on a flexible guide rail.
- Flexible guide rail is held by magnets.
- The welding carriages on/off magnet allows for easy attaching to the guide rail and walk.
- The flexible guide rail allows for external and internal circumferential welds.
- Remote control option standard

2



3



4



5



6



7

Part No.	Description	Pur.	Pk
1	CS-7WC Multi weld & multi position carriage	1	1
2	RCCS-7WC Remote control for CS-7WC	1	1
3	RAIL7WC Rail to suit CS-7WC magnetic on/off	1	1
4	7WC-MOTOR Motor	1	1
5	7WC-PCB PC board main	1	1
6	GMPCB-1013 PC board	1	1
7	7WC/WCB-CS03 Weaving cable 500 mm	1	1
N/s	7WC-CB03 Power board	1	1
N/s	7WC-CB05 Weave board	1	1
N/s	7WC-Y04 X-Y Slide support	1	1
N/s	7WC-WHEEL47 Wheel to suit CS-7WC	4	4
N/s	7WCTWC-T05 Insulation bush	1	1
N/s	7WC-MAGNET Magnet	1	1
N/s	7WC-TCAY01 Torch Holder Assy	1	1

Multi Pass Carriage



1

- Specialised weaving operation eliminates gear backlash providing weld quality.
- Weaving width 0-360°.
- Weaving speed 0-5 rpm/Min.
- Weaving mode 5 styles.
- Left/Right stop time 0.0 > 5.0 seconds.
- Remote control option standard.



3

Part No.	Description	Pur.	Pk
1	CS-100C Multi weld w/ multi pass carriage	1	1
2	RCCS-100C Remote control for CS-100C	1	1
3	RAIL100C Rail to suit CS-100C magnetic on/off	1	1
N/s	CS100C-24 PC board main	1	1

MACHINES

Welding Carriage



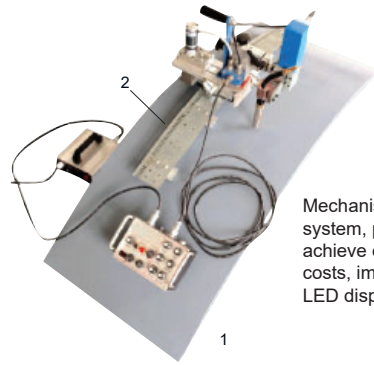
Designed for horizontal fillet welding. Easy setup, no track/rail required due to strong permanent magnet small, light and easy to carry limit stop switches on both sides adjustable torch holder included Increase productivity, increase quality



Designed for horizontal fillet welding. Easy setup, no track/rail required due to strong permanent magnet small, light and easy to carry limit stop switches on both sides adjustable torch holder included Increase productivity, increase quality

Part No.	Description	Pur.	Pk
1	AFWC AF Welding carriage	1	1
2	AFWCM AF Welding carriage mini	1	1

Tank Carriage

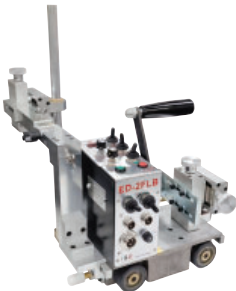


Mechanised pipe & tank welding carriage system, produce higher deposition rates, achieve excellent weld quality, reduce costs, improve productivity. LED display travel speed & oscillation.



Part No.	Description	Pur.	Pk
1	AFED100BP AF Tank carriage	1	1
2	AFED100BPT AF Track magnetic 1.8m	1	1

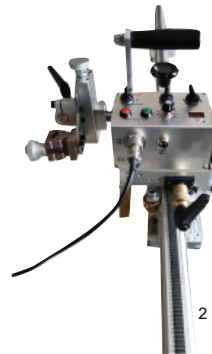
Welding Carriage Twin Torch



Designed for dual horizontal fillet welding. Easy setup, no track/rail required due to strong permanent magnet small, light and easy to carry limit stop switches on both sides adjustable torch holder included. Increase productivity & quality. Stitch or continuous welding options.

Part No.	Description	Pur.	Pk
AFIWWC2T	AF Welding carriage twin torch	1	1

Horizontal Welding Carriage



Mechanised welding carriage system, suitable for butt, fillet & lap welds produce higher deposition rates, achieve excellent weld quality, reduce costs & improve productivity. LED display travel speed.

Part No.	Description	Pur.	Pk
1	AFEDHZ AF Horizontal welding carriage	1	1
2	AFEDHZT AF Track 1.5m	1	1

Welding Carriage VC



Designed for horizontal fillet welding. Easy setup, no track/rail required due to strong permanent magnet small, light and easy to carry limit stop switches on both sides adjustable torch holder included. Increase productivity & quality. Stitch or continuous welding options

Part No.	Description	Pur.	Pk
AFWCVC	AF Welding carriage VC	1	1

Magnetic Pipe Weld Carriage



Part No.	Description	Pur.	Pk
AFPWC	Magnetic pipe weld carriage	1	1

MACHINES

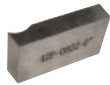
Pipe Beveler



1



2



3

Part No.	Description	Pur.	Pk
1	IDB80 Pipe beveler 28 - 76 mm	1	1
	IDB120 Pipe beveler 40 - 110 mm	1	1
2	42B-0822-30 Beveling tool bits 30° - IPB	1	1
	42B-0822-37 Beveling tool bits 37° - IPB	1	1
3	42F-0822 Facing tool bit - IPB	1	1

Plate Beveler



1



2



3

Part No.	Description	Pur.	Pk
1	PB15 Plate beveler 30°	1	1
2	PB15TH30A Tool head set 30° for PB15	1	1
3	PB15CI Carbide insert (pk of 5) FOR PB15	5	5

Pipe Beveler Pneumatic



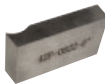
1



2



3



4

Part No.	Description	Pur.	Pk
1	IDP80 Pipe beveler pneumatic 28 - 76 mm	1	1
	IDP120 Pipe beveler pneumatic 40 - 110 mm	1	1
2	IDP252 Pipe beveler pneumatic 80 - 240 mm	1	1
3	42B-0822-30 Beveling tool bits 30° - IPB	1	1
	42B-0822-37 Beveling tool bits 37° - IPB	1	1
4	42F-0822 Facing tool bit - IPB	1	1

Pipe Beveler Electric



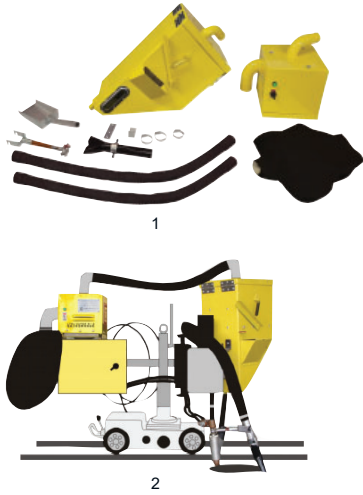
1



2

Part No.	Description	Pur.	Pk
1	IDE630 Pipe beveler electric 300 - 630 mm	1	1
2	42B-2020-30 Beveling tool bits 30°	1	1
	42B-2020-37 Beveling tool bits 37°	1	1
N/S	42F-2020 Facing tool bit	1	1

Flux Recovery System



Part No.	Description	Pur.	Pk	
1	LTHJ-B3	Welding flux recovery system air	1	1
2	LTHJ-B1-2	Welding flux recovery system electric	1	1

Flux Recovery Unit w/ Port



Part No.	Description	Pur.	Pk	
1	AP-1 PLUS	Flux recovery unit w/ port & bracket	1	1
2	MAGSEP-1	Magnet separator recovery unit	1	1