

GAS EQUIPMENT

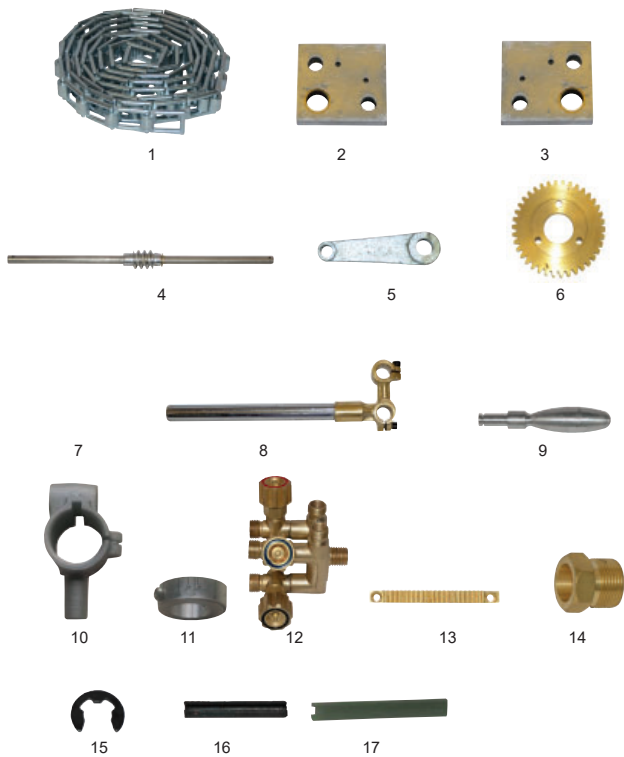
Pipe Cutter

- 2 seat tip (type 41 & 44)
- 100-600 mm (4"- 24") diameter pipe
- 600 mm (24") and over diameter pipe with additional chain
- Straight or bevel cutting of steel pipe
- 2.3 m (7.5') adjustable link chain (80 links)
- Interlocking chain links for easy adjustment
- Weight 10 kgs



Part No.	Description	Pur.	Pk
1 PC-12	Pipe cutter	1	1
2 PC-12A	Pipe cutter 240V	1	1

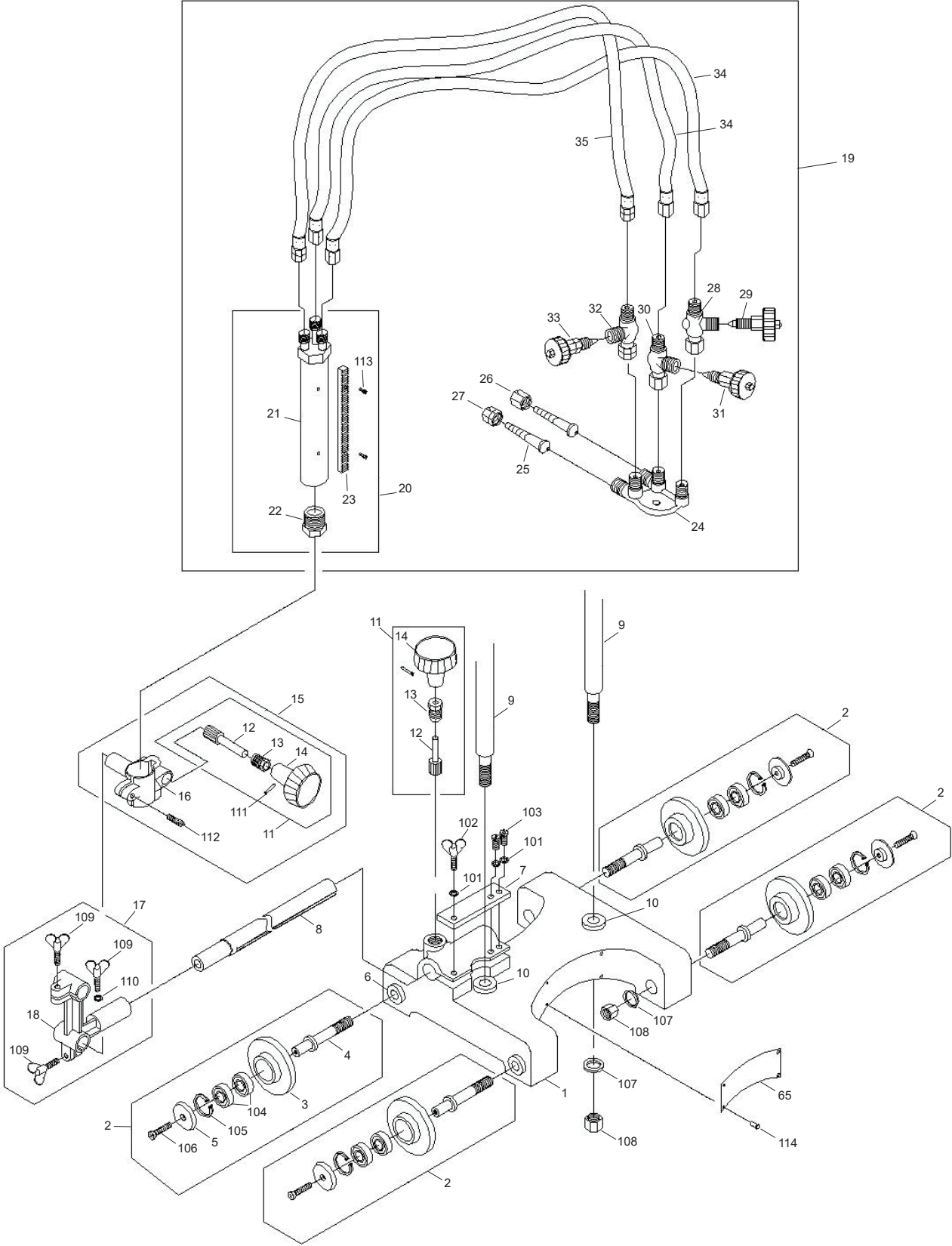
Pipe Cutter PC-12 Spare Parts (Old model)



Part No.	Description	Pur.	Pk
1 PC-CHAIN	Pipe cutter chain - 80 links	1	1
2 PC6	Worm metal right	1	1
3 PC7	Worm metal left	1	1
4 PC10	Worm shaft	1	1
5 PC11	Grip arm	1	1
6 PC12W	Worm wheel	1	1
7 PC17	Torch holder support assembly	1	1
8 PC23	Grip	1	1
9 PC26	Torch holder	1	1
10 PC27	Angle graduation ring	1	1
11 PC40	Distributor	1	1
12 PC50	Rack	1	1
13 PC51	Tip nut	1	1
14 PC53	Stop ring	1	1
15 PC62	Spring pin PR-2.5 x 20 mm (0.1" x 13/16")	1	1
16 PC65	Reduction gear assembly	1	1

GAS EQUIPMENT

Pipe Cutter PC-12 Breakdown



GAS EQUIPMENT

Pipe Cutter PC-12 Spare Parts (New model)

Part No.	Description	Pur.	Pk
1	Bottom seat	TBC	TBC
2	Guide wheel assembly	TBC	TBC
3	Guide wheel	TBC	TBC
4	Guide wheel shaft	TBC	TBC
5	Idler pulley gland	TBC	TBC
6	Idler pulley shaft sleeve	TBC	TBC
7	Rack locating pin	TBC	TBC
8	Transverse rack	TBC	TBC
9	Bracket	TBC	TBC
10	Bracket axle sleeve	TBC	TBC
11	Hand wheel assembly	TBC	TBC
12	Hand wheel	TBC	TBC
13	Hand wheel shaft cap	TBC	TBC
14	Hand wheel	TBC	TBC
15	PC12/15 Torch holder assembly	1	1
16	Cutting torch holder	TBC	TBC
17	Clamp connector assembly	TBC	TBC
18	Clamping connector	TBC	TBC
19	Cutting torch and gas path assembly	TBC	TBC
20	PC12/20 Torch barrel 3 seat complete	1	1
21	PC12A/21 Torch body	1	1
22	Cutting torch pressure cap	TBC	TBC
23	Cutting torch rack	TBC	TBC
24	PC12/24 Distributor	1	1
25	Air intake connectors	TBC	TBC
26	Oxygen connector pressure cap	TBC	TBC
27	Acetylene joint pressure cap	TBC	TBC
28	Preheat oxygen two-way body	TBC	TBC
29	Preheat oxygen two-way valve needle	TBC	TBC
30	Cut oxygen two-way valve body	TBC	TBC
31	Cut oxygen two-way valve needle	TBC	TBC
32	Acetylene divalve body	TBC	TBC
33	Acetylene dithrough valve needle	TBC	TBC
34	PC12AHOSE-SET Oxygen hose	1	1
35	Acetylene hose	TBC	TBC
65	Scutcheon	TBC	TBC
101	Flat mat Ø5	TBC	TBC
102	Butterfly screws M5x20	TBC	TBC
103	Cylindrical head screws M5x12	TBC	TBC
104	Bearing 6001	TBC	TBC
105	Circlip Ø 28	TBC	TBC
106	Countersunk head screw M5x12	TBC	TBC
107	Flat mat Ø12	TBC	TBC
108	Hex nut M12	TBC	TBC
109	Butterfly screws M6x15	TBC	TBC
110	Flat mat Ø6	TBC	TBC
111	Elastic cylindrical pin Ø x 18 2.5	TBC	TBC
112	Cylindrical head screw M6x20	TBC	TBC
113	Cylindrical head screw M3x6	TBC	TBC
114	Rivet Ø2	TBC	TBC

Distributor



Part No.	Description	Pur.	Pk
PC12/24	Distributor	1	1

Torch Barrel



Part No.	Description	Pur.	Pk
PC12/20	Torch barrel 3 seat complete	1	1

Torch Body



Part No.	Description	Pur.	Pk
PC12A/21	Torch body	1	1

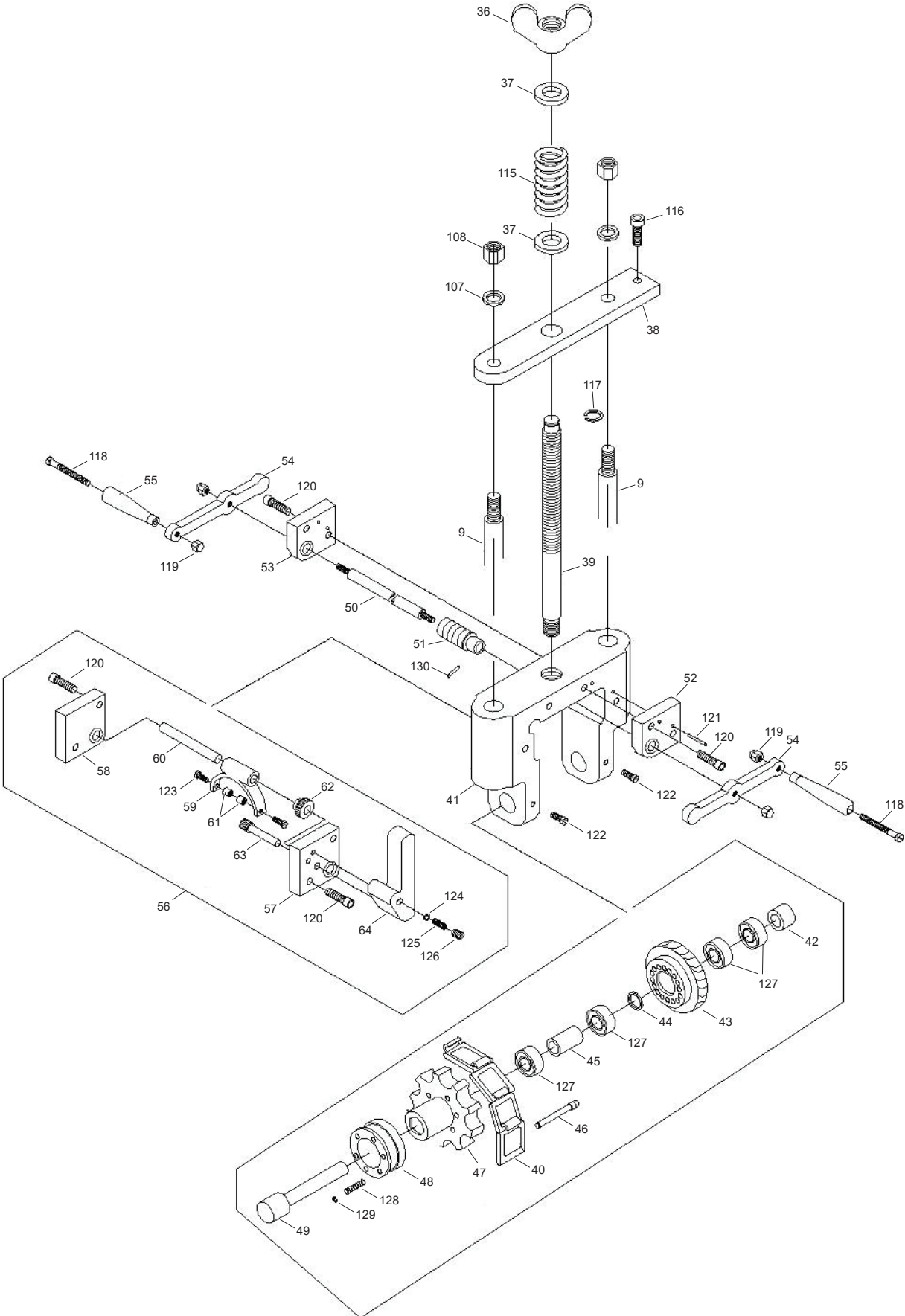
Torch Holder



Part No.	Description	Pur.	Pk
PC12/15	Torch holder assembly	1	1

GAS EQUIPMENT

Pipe Cutter PC-12 Breakdown



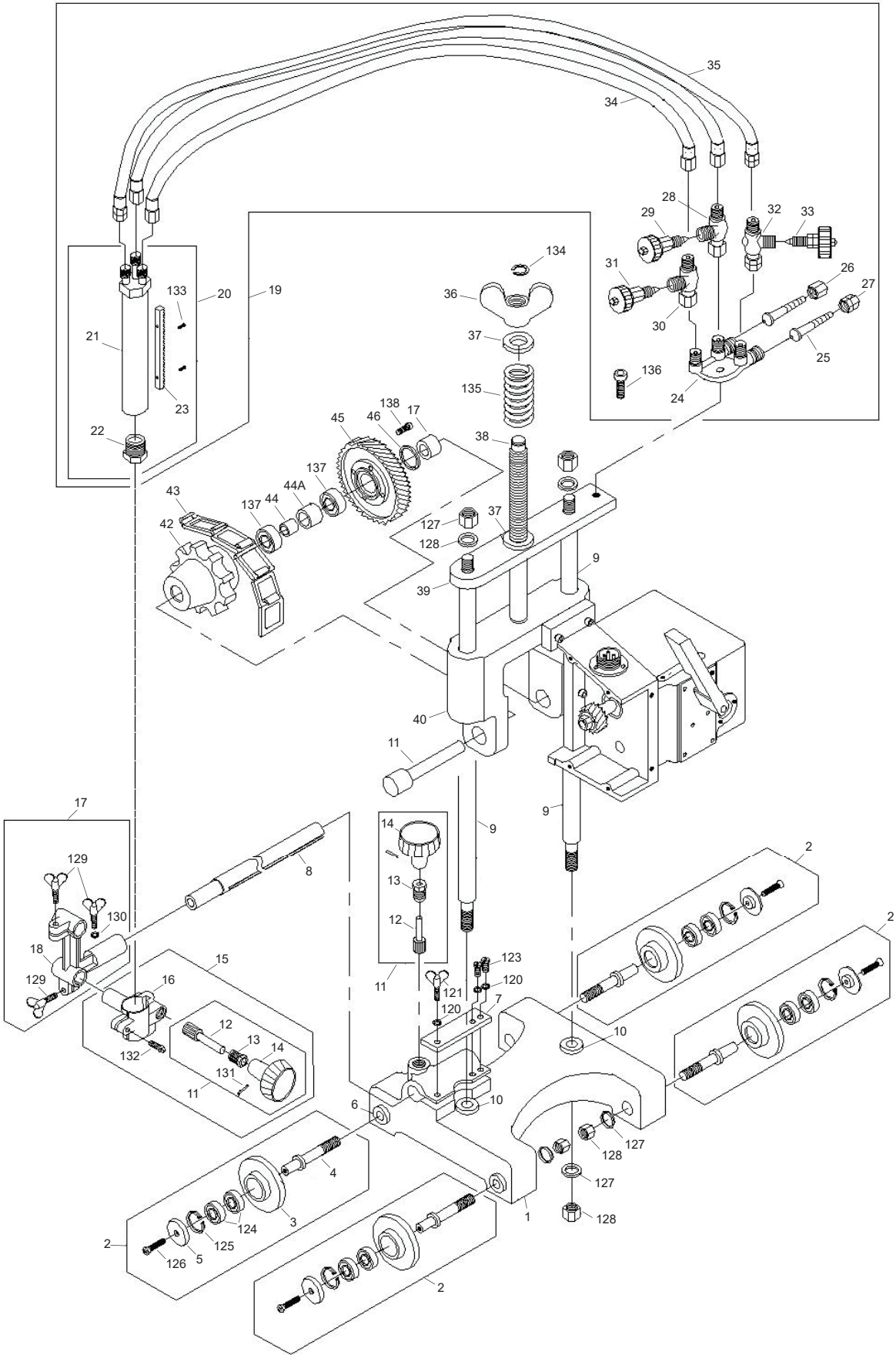
GAS EQUIPMENT

Pipe Cutter PC-12 Spare Parts (New model)

Part No.	Description	Pur.	Pk
9	Bracket	TBC	TBC
36	Large butterfly nut	TBC	TBC
37	Pacific mat	TBC	TBC
38	Beam plate	TBC	TBC
39	Lifting screw	TBC	TBC
40	Chain (maximum diameter 0.6 m)	TBC	TBC
41	Bracket	TBC	TBC
42	Sprocket shaft sleeve	TBC	TBC
43	A big worm	TBC	TBC
44	Worm gear casing	TBC	TBC
45	Bearing bushing	TBC	TBC
46	Clutch pull pin	TBC	TBC
47	Sprocket	TBC	TBC
48	The clutch	TBC	TBC
49	Sprocket shaft	TBC	TBC
50	Hand worm shaft	TBC	TBC
51	Hand worm	TBC	TBC
52	Worm front locating block	TBC	TBC
53	Worm rear positioning block	TBC	TBC
54	Middle three goals	TBC	TBC
55	Crank handle	TBC	TBC
56	Clutch fork assembly	TBC	TBC
57	Locate block before pulling the fork	TBC	TBC
58	After pulling fork, locate the block	TBC	TBC
59	Clutch fork	TBC	TBC
60	Clutch and draw fork shaft	TBC	TBC
61	Drawing piece	TBC	TBC
62	Fork gear	TBC	TBC
63	Clutch gear shaft	TBC	TBC
64	Clutch handle	TBC	TBC
66	Enlarged guide wheel	TBC	TBC
107	Flat mat Ø12	TBC	TBC
108	Hex nut M12	TBC	TBC
115	Spring Ø 32 x 60	TBC	TBC
116	Socket head screw M8 x 19	TBC	TBC
117	Wild spring Ø 10	TBC	TBC
118	Cylindrical head screw M6 x 60	TBC	TBC
119	Half round heat nut M5	TBC	TBC
120	Socket head screw M6 x 25	TBC	TBC
121	Elastic cylindrical pin Ø 4 x 20	TBC	TBC
122	Cylindrical head screw M6 x 12	TBC	TBC
123	Cylindrical head screw M5 x 8	TBC	TBC
124	Steel ball Ø 6	TBC	TBC
125	Spring Ø 6 x 12	TBC	TBC
126	Set screw M8 x 8	TBC	TBC
127	Bearing 6002	TBC	TBC
128	Spring Ø 7 x 22	TBC	TBC
129	Spring Ø 4 cards	TBC	TBC
130	Elastic cylindrical pin Ø 2.5 x 12	TBC	TBC

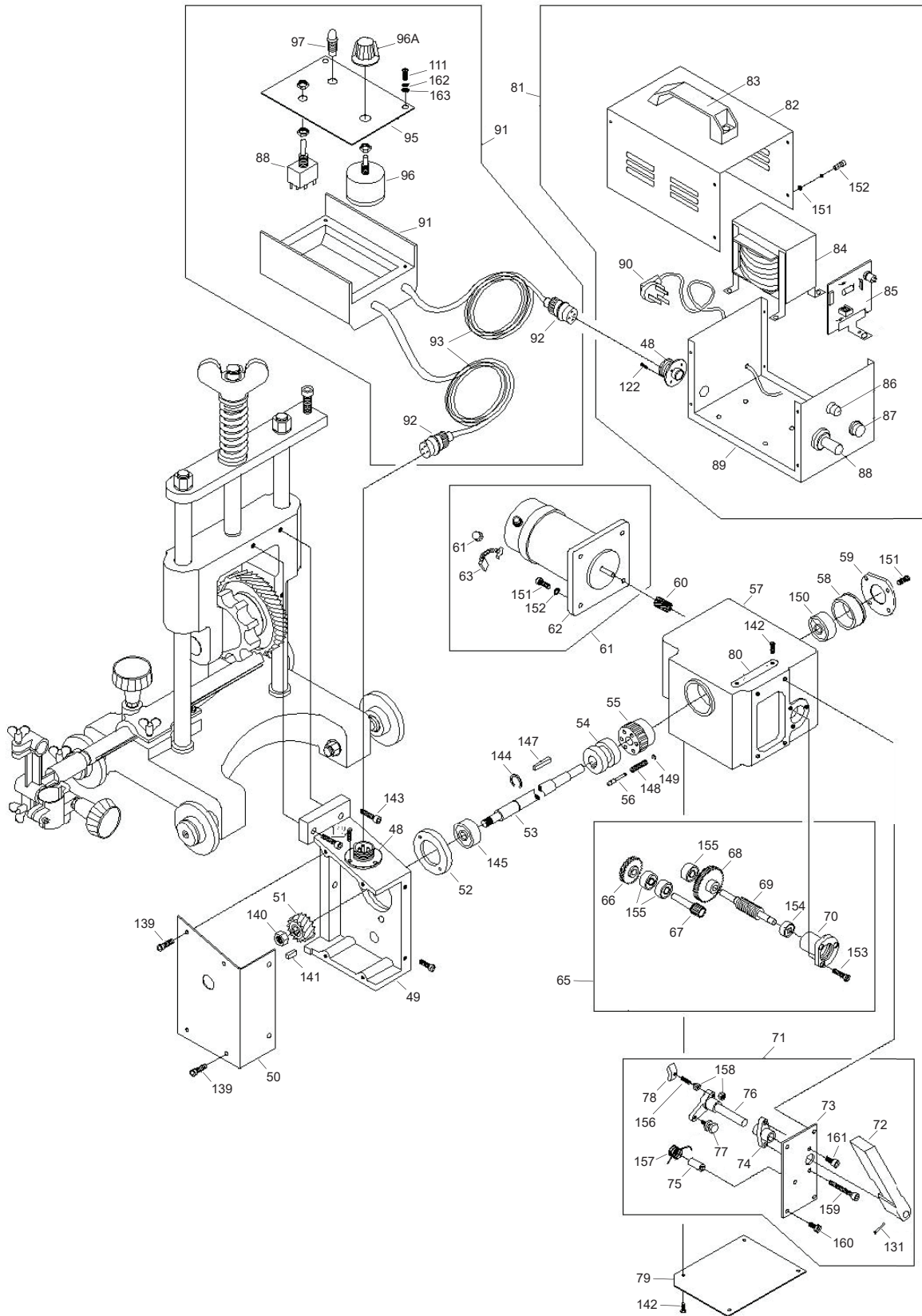
GAS EQUIPMENT

Pipe Cutter PC-12A Breakdown



GAS EQUIPMENT

Pipe Cutter PC-12A Breakdown



GAS EQUIPMENT

Pipe Cutter PC-12A Spare Parts

Part No.	Description	Pur.	Pk
1	1212001	Body base	1 1
2	1212002	Guide wheel assembly	4 4
3	1212003	Guide wheel	4 4
4	1212004	Guide wheel shaft	4 4
5	1212005	Gland	4 4
6	1212006	Shaft sleeve	6 6
7	1212007	Rack bar locking pin	1 1
8	1212008	Cross-feed rack bar	1 1
9	1212009	Slide shaft	2 2
10	1212010	Slide shaft sleeve	2 2
11	1212011	Cross feed pinion unit	2 2
12	1212012	Pinion	2 2
13	1212013	Pinion metal	2 2
14	1212014	Handle	2 2
15	1212015	Torch holder assembly	1 1
16	1212016	Torch holder	1 1
17	1212017	Torch holder base assy	1 1
18	1212018	Torch holder base	1 1
19	1212019	Gas distribution system	1 1
20	1212020	Torch assembly	1 1
21	1212021	Torch body	1 1
22	1212022	Torch nut	1 1
23	1212023	Rack	1 1
24	1212024	Gas distributor	1 1
25	1212025	Hose connector	2 2
26	1212026	Nut for oxygen	1 1
27	1212027	Nut for gas	1 1
28	1212028	Preheating oxygen valve body	1 1
29	1212029	Preheating oxygen valve needle	1 1
29a	1212029	Preheating oxygen valve	1 1
30	1212030	Cutting oxygen valve body	TBC TBC
31	1212031	Preheating oxygen valve needle	1 1
32	1212032	Gas valve body	1 1
33	1212033	Gas valve needle	1 1
33a	1212033	Gas valve	1 1
34	1212034	Oxygen hose	2 2
35	1212035	Gas hose	1 1
36	1212036	Wing handle	1 1
37	1212037	Washer	2 2
38	1212038	Lift shaft	1 1
39	1212039	Upper plate	1 1
40	1212040	Slide bracket	1 1
41	1212041	Sprocket shaft	1 1
42	1212042	Sprocket	1 1
43	1212043	Chain	1 1
44a	-	Collar (B)	TBC TBC
44b	1212044	Collar (C)	1 1
45	1212045	Big drive gear	1 1
46	1212046	Sprocket washer	2 2
47	1212047	Collar (A)	1 1
48	1212048	Metal socket	1 1
49	1212049	Transmission case connection	1 1
50	1212050	Dust-proof cover	1 1
51	1212051	Small spiral gear	1 1
52	1212052	Eccentric sleeve	1 1
53	1212053	Output main axle	1 1
54	1212054	Clutch	2 2
55	1212055	Clutch worm	2 2
56	1212056	Clutch pin	1 1
57	1212057	Transmission case	1 1

Part No.	Description	Pur.	Pk
58	1212058	Bear sleeve	1 1
59	1212059	Bear cover	1 1
60	1212060	Motor gear	1 1
61	1212061	Motor assembly	2 2
62	1212062	Motor	1 1
63	1212063	Carbon brush	TBC TBC
64	1212064	Carbon cap	1 1
65	1212065	Reduction gear assembly	1 1
66	1212066	Passive spiral gear	TBC TBC
67	1212067	Gear shaft	TBC TBC
68	1212068	Reduction gear	TBC TBC
69	1212069	Worm shaft	TBC TBC
70	1212070	Worm shaft retainer	TBC TBC
71	1212071	Clutch assembly	TBC TBC
72	1212072	Clutch handle	TBC TBC
73	1212073	Locating plate	TBC TBC
74	1212074	Fixing seat	TBC TBC
75	1212075	Spring rod	TBC TBC
76	1212076	Clutch rotating rod	TBC TBC
77	1212077	Spring	TBC TBC
78	1212078	Clutch shift block	TBC TBC
79	1212079	Transmission bottom plate	TBC TBC
80	1212080	Clutch label	TBC TBC
81	1212081	Electric box assembly	TBC TBC
82	1212082	Electric box cover	TBC TBC
83	1212083	Electric box handle	TBC TBC
84	1212084	Transformer	TBC TBC
85	1212085	Circuit board	TBC TBC
86	1212086	Power lamp	TBC TBC
87	1212087	Fuse	TBC TBC
88	1212088	Power switch	TBC TBC
89	1212089	Electric box bottom cover	TBC TBC
90	1212090	Rubber plug	TBC TBC
91	1212091	Remote control assembly	TBC TBC
92	1212092	Metal plug	TBC TBC
93	1212093	Cord	TBC TBC
94	1212094	Remote control box	TBC TBC
95	1212095	Control board	TBC TBC
96	1212096	Condenser	TBC TBC
97	1212097	Power indicator	TBC TBC
120	1212120	Plain cushion Ø5	TBC TBC
121	1212121	Wing bolt M5 x 20	TBC TBC
123	1212123	Cap screw M5 x 12	TBC TBC
124	1212124	Bearing 6001	TBC TBC
125	1212125	Inner circlip Ø28	TBC TBC
126	1212126	Countersunk head screw M5 x12	TBC TBC
127	1212127	Plain cushion Ø12	TBC TBC
128	1212128	Hexagon bolt M12	TBC TBC
129	1212129	Wing bolt 6 x 15	TBC TBC
130	1212130	Plain cushion Ø6	TBC TBC
131	1212131	Elastic straight pin Ø2.5 x 18	TBC TBC
132	1212132	Cap screw M6 x 20	TBC TBC
133	1212133	Cap screw M3 x 6	TBC TBC
134	1212134	Circlip Ø10	TBC TBC
135	1212135	Spring Ø32 x 60	TBC TBC
136	1212136	Inner hexagon screw M8 x 16	TBC TBC
137	1212137	Bearing 6004	TBC TBC
138	1212138	Cap screw M5 x 20	TBC TBC
139	1212139	Semi-round head nut M4 x 8	TBC TBC

GAS EQUIPMENT

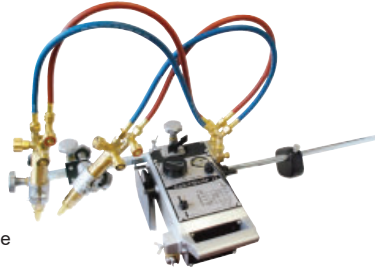
Pipe Cutter PC-12A Spare Parts

Part No.	Description	Pur.	Pk
140	1212140	Hexagon nut M10	TBC TBC
141	1212141	Common flat key M4 x 4 x 8	TBC TBC
142	1212142	Semi round head screw M3 x 8	TBC TBC
143	1212143	Inner hexagon screw M6 x 20	TBC TBC
144	1212144	Circlip Ø14	TBC TBC
145	1212145	Bearing 6302	TBC TBC
146	1212146	Circlip Ø14	TBC TBC
147	1212147	Common fla key M5 x 5 x 25	TBC TBC
148	1212148	Spring M6 x 12	TBC TBC
149	1212149	Circlip Ø4	TBC TBC
150	1212150	Bearing 6300	TBC TBC
151	1212151	Countersunk head screw M4 x 12	TBC TBC
152	1212152	Plain cushion Ø4	TBC TBC
153	1212153	Cap screw M4 x 16	TBC TBC
154	1212154	Bearing 607	TBC TBC
155	1212155	Bearning 608	TBC TBC
156	1212156	Tightening screw M5 x 12	TBC TBC
157	1212157	Spring Ø12	TBC TBC
158	1212158	Hexagonal nut M5	TBC TBC
159	1212159	Inner hexagon screw M5 x 30	TBC TBC
160	1212160	Cap screw M4 x 12	TBC TBC
161	1212161	Inner hexagon screw M5 x 12	TBC TBC
162	1212162	Elastic cushion Ø3	TBC TBC
163	1212163	Plain cushion Ø3	TBC TBC

GAS EQUIPMENT

Gas Champ Cutting Machine

- Compact design
- Simple operation
- Speed control
- Forward / Reverse
- Drive clutch
- Heat shields
- 1 or 2 torch configurations
- Acetylene or LPG fuel gas
- 2 or 3 seat tip styles available (2 seat - type 41, 44)
- All gas connections standard 5/8-18UNF R/H & L/H



Part No.	Description	Pur.	Pk
GC121T2S	Cutting machine 2 seat w/ 1 torch & rail	1	1
GC122T2S	Cutting machine 2 seat w/ 2 torches & rail	1	1
GC121T3S	Cutting machine 3 seat w/ 1 torch & rail	1	1
GC122T3S	Cutting machine Gaschamp 12-2 torch 3 seat koike	1	1

Gas Champ OXY/ACET Cutting Kit



Part No.	Description	Pur.	Pk
GC346ACKIT	Gas champ OXY/ACET cutting kit	1	1
1 3001L	Single flint lighters (10 per box)	1 BX	1 BX
2 346CA	Cutting attachment	1	1
3 346T	Torch handle	1	1
4 452X-IW	Regulator oxygen	1	1
5 452Y-IW	Regulator acetylene	1	1
6 AS/OA5MM-5	5 m (16') cut & coupled 5 mm (3/16") OXY/ACET hose	1	1
7 CB20GCV	Gas champ bag 510 mm (20")	1	1
8 FA3RF-BAM	Flashback arrestor reg fuel	1	1
9 FA3RO-BAM	Flashback arrestor reg oxygen	1	1
10 FA3TF-BAM	Flashback arrestor torch fuel	1	1
11 FA3TO-BAM	Flashback arrestor torch oxygen	1	1
12 FT41-8	Size 8 cutting tip	1	1
FT41-12	Size 12 cutting tip	1	1
13 JAC3002695	Cutting goggle	1	1

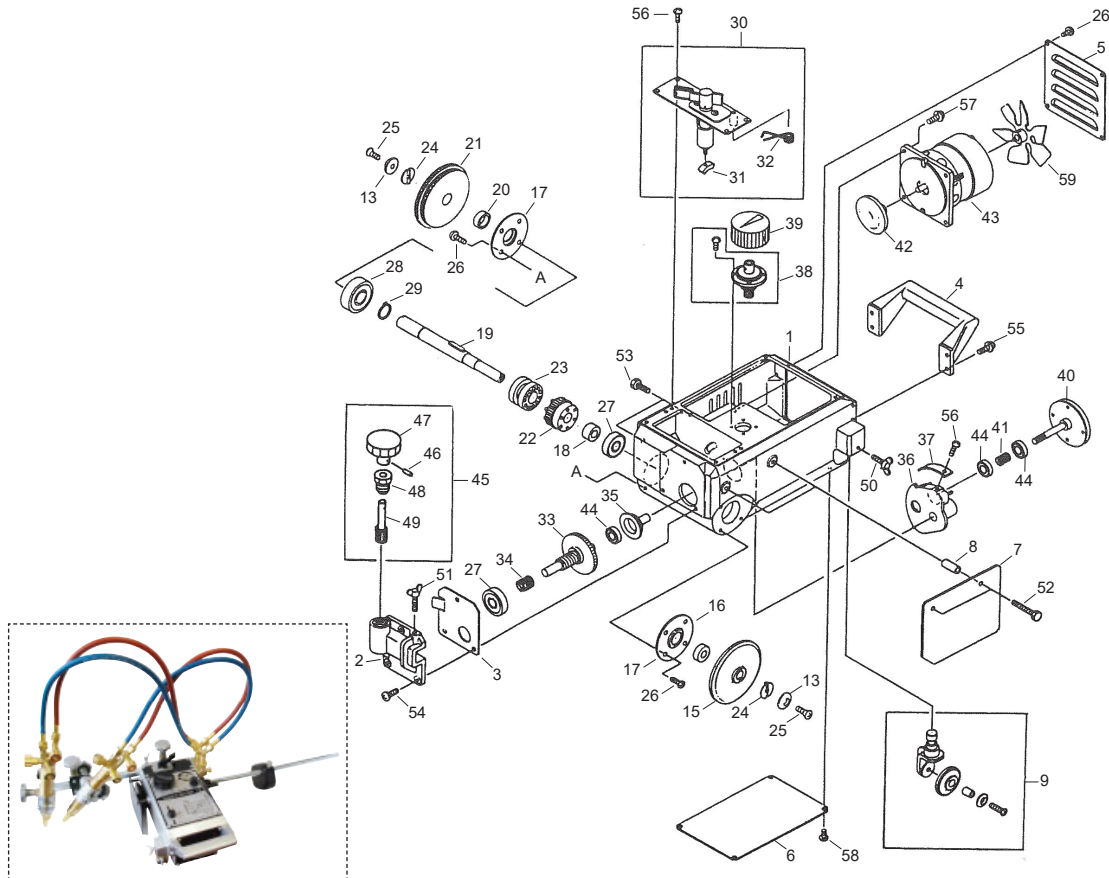
Gas Champ OXY/LPG Cutting Kit



Part No.	Description	Pur.	Pk
GC346LCKIT	Gas champ OXY/LPG cutting kit	1	1
1 210PIB-IW	LPG Regulator	1	1
2 3001L	Single flint lighters (10 per box)	1 BX	1 BX
3 346CA	Cutting attachment	1	1
4 346T	Torch handle	1	1
5 452X-IW	Regulator oxygen	1	1
6 CB20GCV	Gas champ bag 510 mm (20") yellow	1	1
7 FA3RF-BAM	Flashback arrestor reg fuel	1	1
8 FA3RO-BAM	Flashback arrestor reg oxygen	1	1
9 FA3TF-BAM	Flashback arrestor torch fuel	1	1
10 FA3TO-BAM	Flashback arrestor torch oxygen	1	1
11 FT44-8	Size 8 cutting tip	1	1
FT44-12	Size 12 cutting tip	1	1
12 JAC3002695	Cutting goggle	1	1
13 LPG5/OXY5MM-5	5 m (16') cut & coupled 5 mm (3/16") OXY/LPG hose	1	1

GAS EQUIPMENT

Gas Champ 12 Breakdown 10.1 Main Unit



Part No.	Description	Pur.	Pk
1	60031802	Case	1 1
2	60031803	Cross feed holder	1 1
3	60031804	Cross feed liner	1 1
4	60031805	Handle	1 1
5	SPIK12-6031806	Fan cover	1 1
6	60031807	Bottom plate	1 1
7	60031808	Heat shield	1 1
8	60031809	Heat shield collar	1 1
9	60031810	Idle wheel unit	1 1
n/s	60030213	Roller 4 Idle wheel unit	1 1
n/s	60031811	Idle wheel bracket	1 1
n/s	60031812	Roller shaft	1 1
13	60030241	Washer	1 1
n/s	6C510525	Screw SM-5 x 25 mm (3/16" x 1")	1 1
15	60031813	Idle wheel	1 1
16	60031814	Collar (A)	1 1
17	60031815	Bearing retainer	1 1
18	60031816	Collar (B)	1 1
19	60031817	Drive wheel shaft with key	1 1
20	SPIK12-6031818	Collar (C)	TBC TBC
21	60031819	Drive wheel	1 1
22	60030247	Worm wheel	1 1
23	60030246	Clutch	1 1
24	60030242	Washer	1 1
25	6C510515	Screw SM-5 x 15 mm (3/16" x 9/16")	1 1
26	6C520508	Screw SP-5 x 8 mm (3/16" x 5/16")	TBC TBC
27	60031836	Bearing (6300ZZ)	1 1
28	60030819	Bearing (6302ZZ)	1 1
29	6B520150	Stop ring (STW-15)	1 1
30	60031820	Clutch lever assembly	1 1
31	60030265	Slider	1 1

Part No.	Description	Pur.	Pk
32	60031821	Clutch spring	1 1
33	60031822	Worm shaft assembly	1 1
34	60031823	Worm spring	1 1
35	60031824	Speed adjusting shaft	1 1
36	60031825	Speed adjusting bracket	1 1
37	60031826	Rack	1 1
38	60031827	Speed adjusting handle	1 1
39	60031828	Speed adjusting knob	1 1
40	60031860	Speed adjusting cone assembly	1 1
41	60031829	Cone spring	1 1
42	60031868	Motor disk	1 1
43	60031830	Motor (100V - 120V)	1 1
	60031832	Motor (220V)	1 1
	60031833	Motor (230V - 240V)	1 1
44	60030269	Bearing (608ZZ)	1 1
45	60031835	Cross feed pinion unit	1 1
46	6B022516	Spring pin PR-2.5 x 16 mm (0.1" x 5/8")	1 1
47	60030823	Handle (Ø 40)	TBC TBC
48	60030318	Pinion metal	1 1
49	60030319	Pinion	1 1
50	6C110615	Wing bolt BS-6 x 15 mm (1/4" x 9/16")	1 1
51	6C110625	Wing bolt BS-6 x 25 mm (1/4" x 1")	1 1
52	6C010630	Hexagon bolt BH-6 x 30 mm (1/4" x 1.2")	1 1
53	6C010618	Hexagon bolt BH-6 x 18 mm (1/4" x 11/16")	1 1
54	6C520614	Screw SP-6 x 14 mm (1/4" x 9/16")	1 1
55	6C530515	Screw SP-5 x 15 mm (3/16" x 9/16") with washer	1 1
56	6C520410	Screw SP-4 x 10 mm (5/32" x 3/8")	1 1
57	6C520415	Screw SP-4 x 15 mm (5/32" x 9/16")	TBC TBC
58	6C520408	Screw SP-4 x 8 mm (5/32" x 5/16")	1 1
59	60030289	Motor fan with screw	1 1

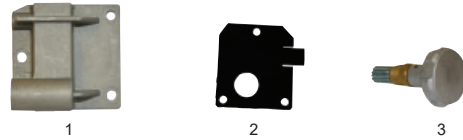
GAS EQUIPMENT

Assembly



Part No.	Description	Pur.	Pk
1	60031820 Clutch lever assembly	1	1
2	60031822 Worm shaft assembly	1	1
3	60031860 Speed adjusting cone assembly	1	1

Cross Feed



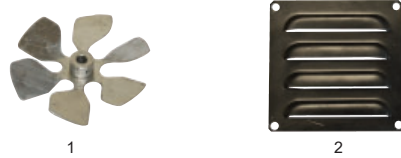
Part No.	Description	Pur.	Pk
1	60031803 Cross feed holder	1	1
2	60031804 Cross feed liner	1	1
3	60031835 Cross feed pinion unit	1	1

Bearings



Part No.	Description	Pur.	Pk
1	60030269 Bearing (608ZZ)	1	1
2	60030819 Bearing (6302ZZ)	1	1
3	60031815 Bearing retainer	1	1
2	60031836 Bearing (6300ZZ)	1	1

Fan



Part No.	Description	Pur.	Pk
1	60030289 Motor fan with screws	1	1
2	SPIK12-6031806 Fan cover	1	1

Bolts



Part No.	Description	Pur.	Pk
1	6C010630 Hexagon bolt 6 x 30 mm (1/4" x 1.2")	1	1
2	6C010618 Hexagon bolt 6 x 18 mm (1/4" x 11/16")	1	1
3	6C110625 Wing bolt 6 x 25 mm (1/4" x 1")	1	1

Handle



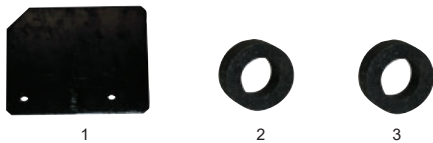
Part No.	Description	Pur.	Pk
1	60031827 Speed adjusting handle	1	1
2	60031805 Handle	1	1

Case



Part No.	Description	Pur.	Pk
60031802	Case	1	1

Collar



Part No.	Description	Pur.	Pk
1	60031809 Heat shield collar	1	1
2	60031814 Collar (A)	1	1
3	60031816 Collar (B)	1	1

Motor



Part No.	Description	Pur.	Pk
1	60031868 Motor disk	1	1
2	60031833 Motor 230V - 240V	1	1

Cutting Attachment



Part No.	Description	Pur.	Pk
6001BCCA	Circle cutting attachment	1	1

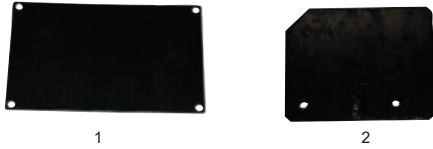
Pinion



Part No.	Description	Pur.	Pk
1	60030318 Pinion metal	1	1
2	60030319 Pinion	1	1

GAS EQUIPMENT

Plates & Shields



Part No.	Description	Pur.	Pk
1	60031807	Bottom plate	1 1
2	60031808	Heat shield	1 1

Rack



Part No.	Description	Pur.	Pk
60031826	Rack	1	1

Rail



Part No.	Description	Pur.	Pk
1MRAIL	Cutting machine rail 1 m (3.2')	1	1
1.8MRAIL	Cutting machine rail 1.8 m (6')	1	1

Roller Shaft



Part No.	Description	Pur.	Pk
60031812	Roller shaft	1	1

Slider



Part No.	Description	Pur.	Pk
60030265	Slider	1	1

Stop Ring



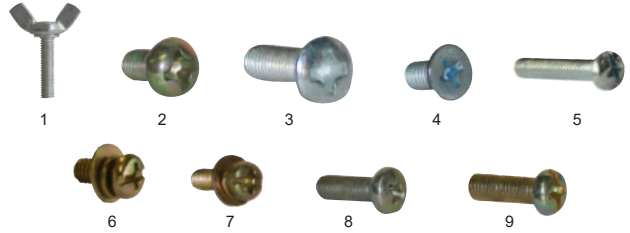
Part No.	Description	Pur.	Pk
6B520150	Stop ring	1	1

Spring



Part No.	Description	Pur.	Pk
1	60031821	Clutch spring	1 1
2	60031823	Worm spring	1 1
3	60031829	Cone spring	1 1
4	6B022516	Spring pin	1 1

Screw



Part No.	Description	Pur.	Pk
1	6C520625	Screw 4	1 1
2	6C510306	Screw 3 x 6 mm (1/8" x 1/4") without nut	1 1
3	6C620308	Screw 3 x 8 mm (1/8" x 5/16") with nut	1 1
4	6C510515	Screw 5 x 15 mm (3/16" x 9/16")	1 1
5	6C510525	Screw 5 x 25 mm (3/16" x 1")	1 1
6	6C520408	Screw 4 x 8 mm (5/32" x 5/16")	1 1
7	6C520410	Screw 4 x 10 mm (5/32" x 3/8")	1 1
8	6C530515	Screw 5 x 15 mm (3/16" x 9/16") with spring washer	1 1
9	6C520614	Screw 6 x 14 mm (1/4" x 9/16")	1 1

Speed Adjusting



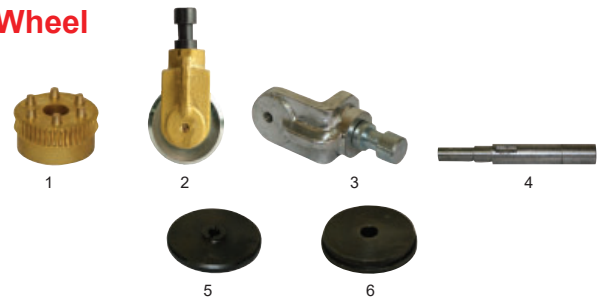
Part No.	Description	Pur.	Pk
1	60031824	Speed adjusting shaft	1 1
2	60031828	Speed adjusting knob	1 1
3	60031825	Speed adjusting bracket	1 1

Washer



Part No.	Description	Pur.	Pk
60030242	Washer	1	1

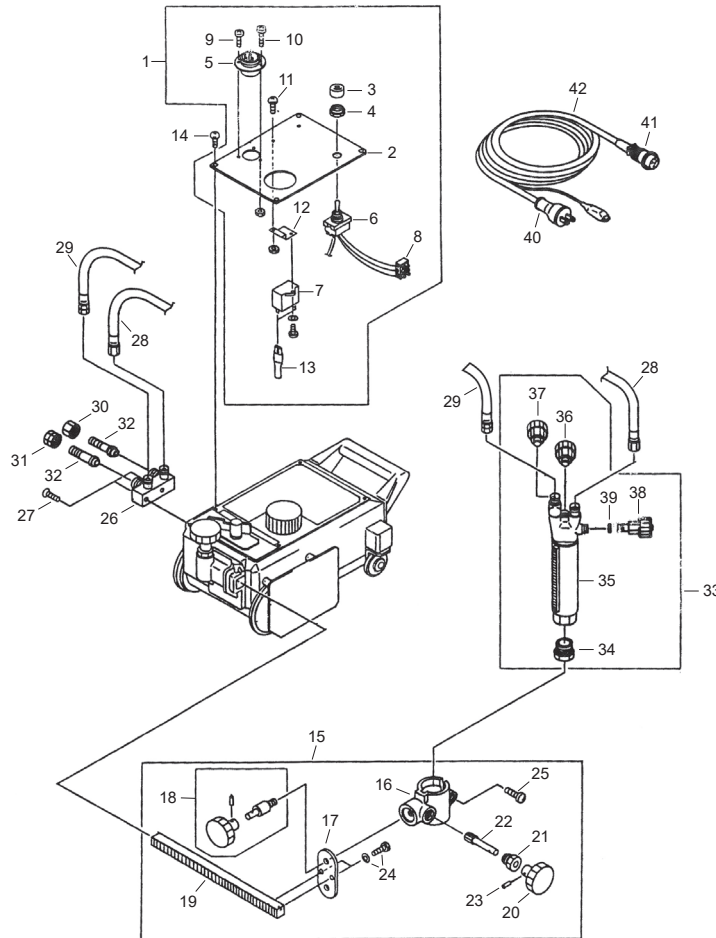
Wheel



Part No.	Description	Pur.	Pk
1	60030247	Worm wheel	1 1
2	60031810	Idle wheel unit	1 1
3	60031811	Idle wheel bracket	1 1
4	60031817	Drive wheel shaft with key	1 1
5	60031813	Idle wheel	1 1
6	60031819	Drive wheel	1 1

GAS EQUIPMENT

Gas Champ 12 Breakdown 10.2 Electrical, Gas and Torch Slide Holder Unit



Part No.	Description	Pur.	Pk
1	60031694 Panel assembly (100V - 120V)	1	1
	60031695 Panel assembly (200V - 240V)	1	1
	60031898 Panel assembly (42V)	1	1
2	60031837 Panel	1	1
3	60032431 Cap for dust protector	1	1
4	60035017 Nut for dust protector	1	1
5	60030273 Metal socket (3P)	1	1
	60030274 Metal socket (4P)	1	1
6	60030283 Switch (100V - 120V)	1	1
	60031859 Switch (200V - 240V)	1	1
7	60035207 Condenser (100V)	1	1
	60035219 Condenser (200V - 220V)	1	1
	60035209 Condenser (230V - 240V)	1	1
	60035210 Condenser (42V)	1	1
8	60030656 Terminal (100V - 120V) 3P	1	1
	60030656 Terminal (200V - 240V) 4P	1	1
9	6C510306 Screw SM-3 x 6 mm (1/8" x 1/4")	1	1
10	6C620308 Screw SM-3 x 8 mm (1/8" x 5/16") w/nut	1	1
11	6C610306 Screw SP-3 x 6 mm (1/8" x 1/4") w/nut	TBC	TBC
12	60032389 Condenser fixing plate	1	1
13	SPIK12-6035211 Faston terminal	TBC	TBC
14	6C520408 Screw SP-4 x 8 mm (5/32" x 5/16")	1	1
15	60031801 Torch holder assembly	1	1
16	60031842 Torch holder	1	1
17	60031843 Torch holder fixing plate	1	1
18	60031844 Holder fixing handle	1	1

Part No.	Description	Pur.	Pk
19	60031845 Rack bar	1	1
20	60030223 Handle (Ø 40 mm (1.6"))	1	1
21	60030909 Pinion metal	1	1
22	60030910 Pinion	1	1
23	6B022516 Spring pin PR-2.5 x 16 mm (0.1" x 5/8")	1	1
24	6C400514 Hexagon bolt BC-5 x 14 mm (3/16" x 9/16")	1	1
25	6C520625 Screw SP-6 x 25 mm (1/4" x 1")	1	1
26	60031846 Distributor (IWWS)	1	1
27	6C510525 Screw SM-5 x 25 mm (3/16" x 1")	1	1
28	OXY600 Hose for oxygen (IWWS)	1	1
29	ACET600 Hose for gas - acetylene (IWWS)	1	1
	LPG600 Hose for gas - LPG (IWWS)	1	1
30	RHN Nut for oxygen (IWWS)	20	20
31	LHN Nut for fuel gas (IWWS)	20	20
32	NP Hose connector oxy & fuel gas (IWWS)	20	20
33	60010050KT Torch - 3 seat tips (KE) (IWWS)	1	1
	60010050CT Torch - 2 seat tips (CW) (IWWS)	1	1
34	60005020 Tip fixing nut	1	1
35	60010056 Rack with screws	1	1
36	60015355 Valve for preheat oxygen	1	1
37	60015356 Valve for gas	1	1
38	60015402 Valve for jet for oxygen	TBC	TBC
39	60005026 O-Ring	TBC	TBC
40	60030279 Rubber plug	TBC	TBC
41	60030910-43 Metal plug 3P	1	1
42	60030201 Cabtyre cord assembly 3 pin	1	1
	60030999 Cord assembly 3 pin	1	1

GAS EQUIPMENT

Assembly



Part No.	Description	Pur.	Pk
1 60031695	Panel assembly	1	1
2 60031801	Torch holder assembly	1	1
1 60031837	Panel	1	1

Handle



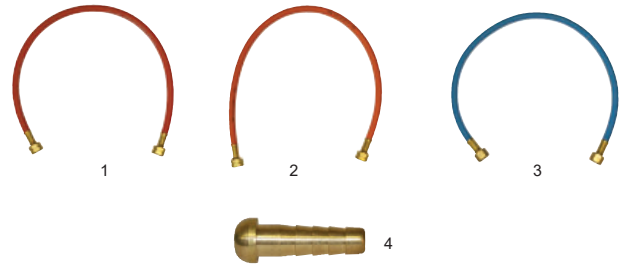
Part No.	Description	Pur.	Pk
1 60030223	Handle	1	1
2 60031844	Holder fixing handle	1	1

Bolt



Part No.	Description	Pur.	Pk
6C400514	Round bolt 5 x 14 mm (3/16" x 9/16")	1	1

Hose & Connector



Part No.	Description	Pur.	Pk
1 ACET600	Hose for acetylene	1	1
ACET600S	Hose for acetylene 600 mm (24") with small fitting	1	1
2 LPG600	Hose LPG 600 mm (24")	1	1
LPG600S	Hose LPG 600 mm (24") with small fitting	1	1
3 OXY600	Hose for oxygen	1	1
OXY600S	Hose for oxygen 600 mm (24") with small fitting	1	1
4 SPIK12-6015004	Hose connector for gas	1	1

Condenser



Part No.	Description	Pur.	Pk
1 60035209	Condenser 230V - 240V	1	1
2 60032389	Condenser fixing plate	1	1

Distributor



Part No.	Description	Pur.	Pk
60031846	Distributor	1	1

Metal Plug



Part No.	Description	Pur.	Pk
60030910-43	Metal plug	1	1

Dust Protector



Part No.	Description	Pur.	Pk
1 60032431	Cap for dust protector	1	1
2 60035017	Nut for dust protector	1	1

Nuts



Part No.	Description	Pur.	Pk
60005020	Tip fixing nut	1	1

GAS EQUIPMENT

O'Ring



Part No.	Description	Pur.	Pk
SPIK12-6015026	O'ring	1	1

Socket



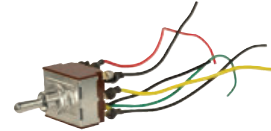
Part No.	Description	Pur.	Pk
60030273	Metal socket	1	1

Pin



Part No.	Description	Pur.	Pk
6B022516	Spring pin 2.5 x 16 mm (0.1" x 5/8")	1	1

Switch



Part No.	Description	Pur.	Pk
60031859	Switch 200V - 240V	1	1

Pinion



Part No.	Description	Pur.	Pk
1 60030909	Pinion metal	1	1
2 60030910	Pinion	1	1

Terminal



Part No.	Description	Pur.	Pk
60030656	Terminal	1	1

Rack



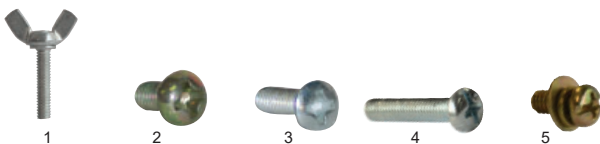
Part No.	Description	Pur.	Pk
1 60010056	Rack with screw for beetle	1	1
2 60031845	Rack bar	1	1

Torch & Holder



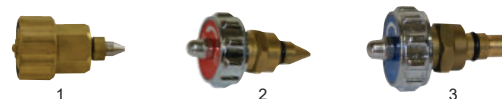
Part No.	Description	Pur.	Pk
1 60031801	Torch holder assembly	1	1
2 60031842	Torch holder	1	1
3 60031843	Torch holder fixing plate	1	1
4 60010050CT	Torch Cigweld	1	1
60010050KT	Torch Koikie	1	1

Screw



Part No.	Description	Pur.	Pk
1 6C520625	Screw SP-6 x 25 mm (1/4" x 1")	1	1
2 6C510306	Screw SM-3 x 6 mm (1/8" x 1/4")	1	1
3 6C620308	Screw SM-3 x 8 mm (1/8" x 5/16") w/ nut	1	1
4 6C510525	Screw SM-5 x 25 mm (3/16" x 1")	1	1
5 6C520408	Screw SP-4 x 8 mm (5/32" x 5/16")	1	1

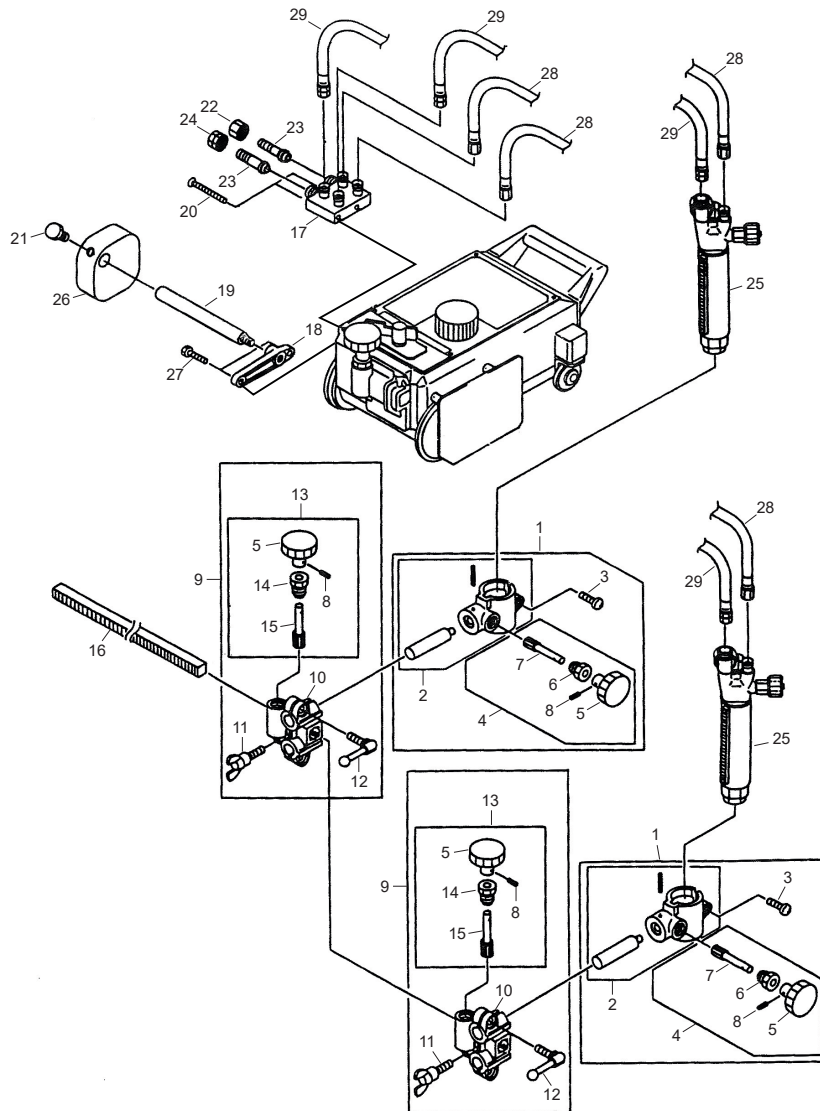
Valve



Part No.	Description	Pur.	Pk
1 60015355	Valve for preheat oxygen	1	1
2 60015356	Valve for fuel gas	1	1
3 60015401	Valve for jet oxygen	1	1

GAS EQUIPMENT

Gas Champ 12 Breakdown 10.3 Two Torch Unit



Part No.	Description	Pur.	Pk
1	60031848 Torch holder assembly	1	1
2	60031856 Torch holder	1	1
3	60030625 Screw SP-6 x 25 mm (1/4" x 1")	TBC	TBC
4	60030908 Torch up/down handle	1	1
5	60030223 Handle (Ø 40 mm (1.6"))	1	1
6	60030909 Pinion metal	1	1
7	60030273 Pinion	1	1
8	6B022516 Spring pin PR-2.5 x 16 mm (0.1" x 5/8")	1	1
9	60031849 Torch cross feed holder	1	1
10	60031857 Cross feed holder	1	1
11	60031877 Wing bolt	1	1
12	60030313 Crank handle	1	1
13	60031835 Cross feed pinion unit	1	1
14	60030318 Pinion metal	1	1
15	60030319 Pinion	1	1
16	60031850 Rack bar	1	1
17	60031846 Distributor (IWWS)	1	1

Part No.	Description	Pur.	Pk
N/S	IWR121 Distributor Y - oxygen R/H (IWWS)	1	1
N/S	IWR215 Distributor Y - fuel gas L/H	1	1
18	60031854 Fitting	TBC	TBC
19	60031855 Weight supporter	1	1
20	6C510555 Screw SM-5 x 55 mm (3/16" x 2.2")	1	1
21	6C011035 Hexagon bolt BH-10 x 35 mm (3/8" x 1.4")	1	1
22	RHN Nut for oxygen (IWWS)	20	20
23	NP Hose connector oxygen & gas (IWWS)	20	20
24	LHN Nut for fuel gas (IWWS)	20	20
25	60010050KT Torch - 3 seat tips (KE) (IWWS)	1	1
	60010050CT Torch - 2 seat tips (CW) (IWWS)	1	1
26	60030381 Weight	1	1
27	6C010640 Hexagon bolt BH-6 x 40 mm (1/4" x 1.6")	TBC	TBC
28	OXY600 Hose for oxygen (IWWS)	1	1
29	ACET600 Hose for gas - acetylene (IWWS)	1	1
	LPG600 Hose for gas - LPG (IWWS)	1	1

GAS EQUIPMENT

Bolts



Part No.	Description	Pur.	Pk
1	60031877 Wing bolt	1	1
2	6C011035 Hexagonal bolt BH-10 x 35 mm (3/8" x 1.4")	1	1

Screw



Part No.	Description	Pur.	Pk
6C510555	Screw SM-5 x 55 mm (3/16" x 2.2")	1	1

Distributor



Part No.	Description	Pur.	Pk
60031852	Distributor	1	1

Spring



Part No.	Description	Pur.	Pk
6B022516	Spring pin	1	1

Hose Connector



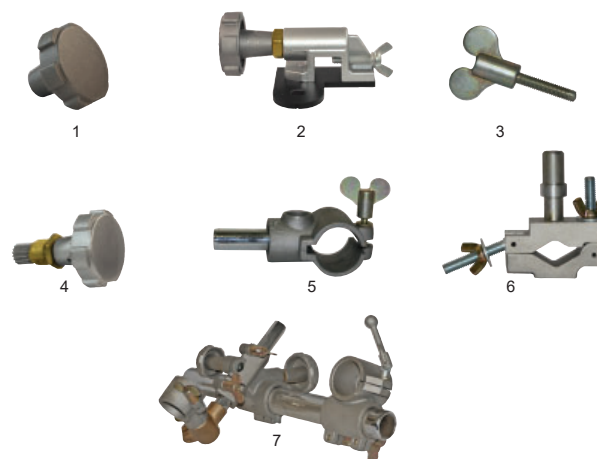
Part No.	Description	Pur.	Pk
SPIK12-6015004	Hose connector for gas	1	1

Pinion



Part No.	Description	Pur.	Pk
1	60030318 Pinion metal	1	1
2	60030909 Pinion metal	1	1
3	60031835 Cross feed pinion unit	1	1
4	60030319 Pinion	1	1

Torch Holder & Handles



Part No.	Description	Pur.	Pk
1	60030223 Handle	1	1
2	60031849 Torch cross feed holder	1	1
3	60030313 Crank handle	1	1
4	60030908 Torch up/down handle	1	1
5	60031856 Torch holder	1	1
6	SP-CG2-11B-PTH Plasma torch holder	1	1
7	SP-IK-12MAXI-THA&RA Torch holder & rack assembly	1	1

Rack



Part No.	Description	Pur.	Pk
60031850	Rack bar	1	1

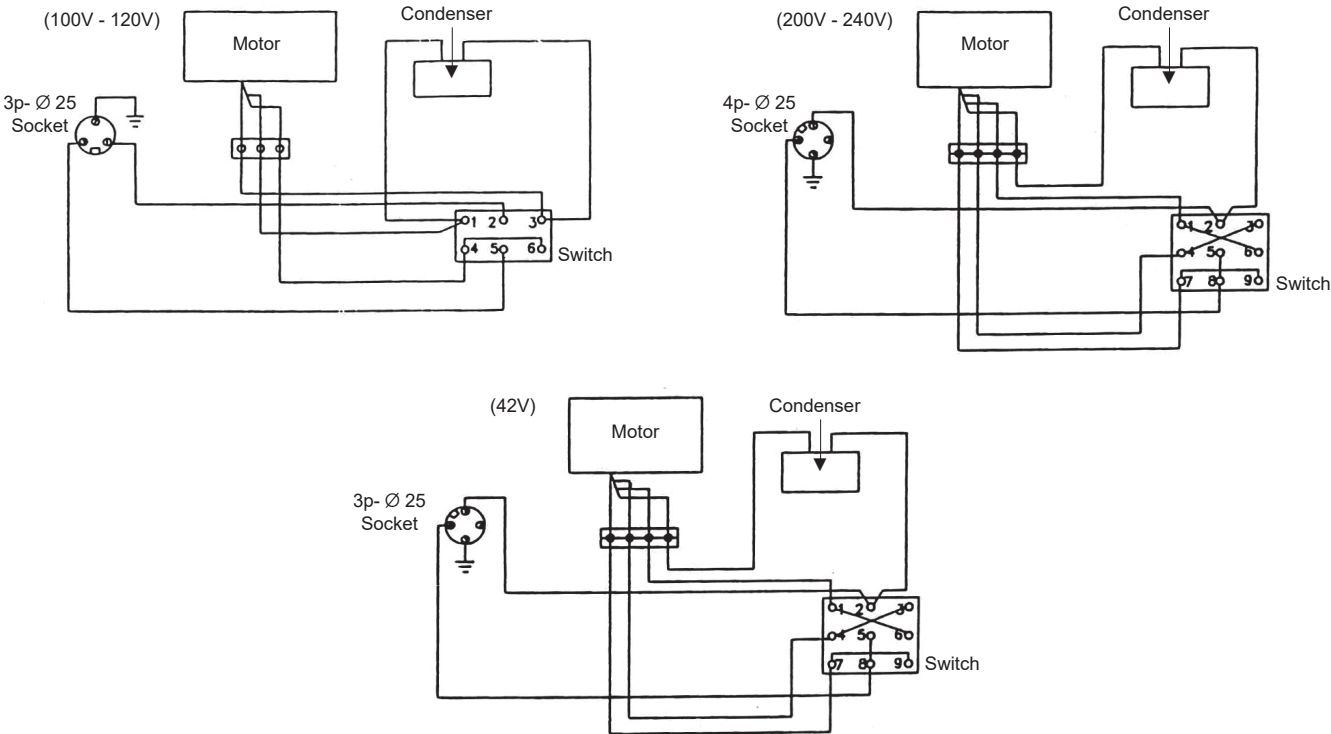
Weight



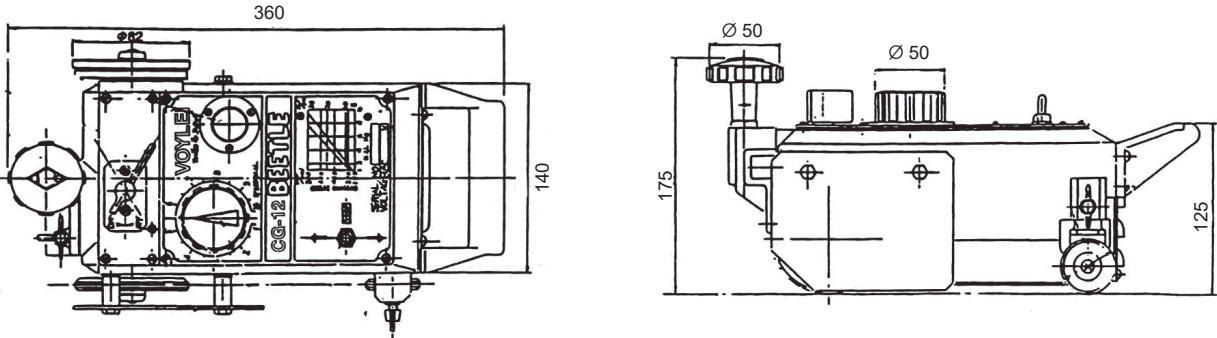
Part No.	Description	Pur.	Pk
1	60030381 Weight	1	1
2	60031855 Weight supporter	1	1

GAS EQUIPMENT

Gas Champ 12 Breakdown Wiring Diagram

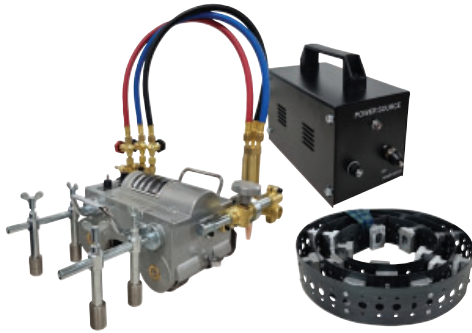


Gas Champ 12 Breakdown Assembly Drawing of CG-12 Beetle



GAS EQUIPMENT

Gas Champ Magnetic Pipe Cutting Machine



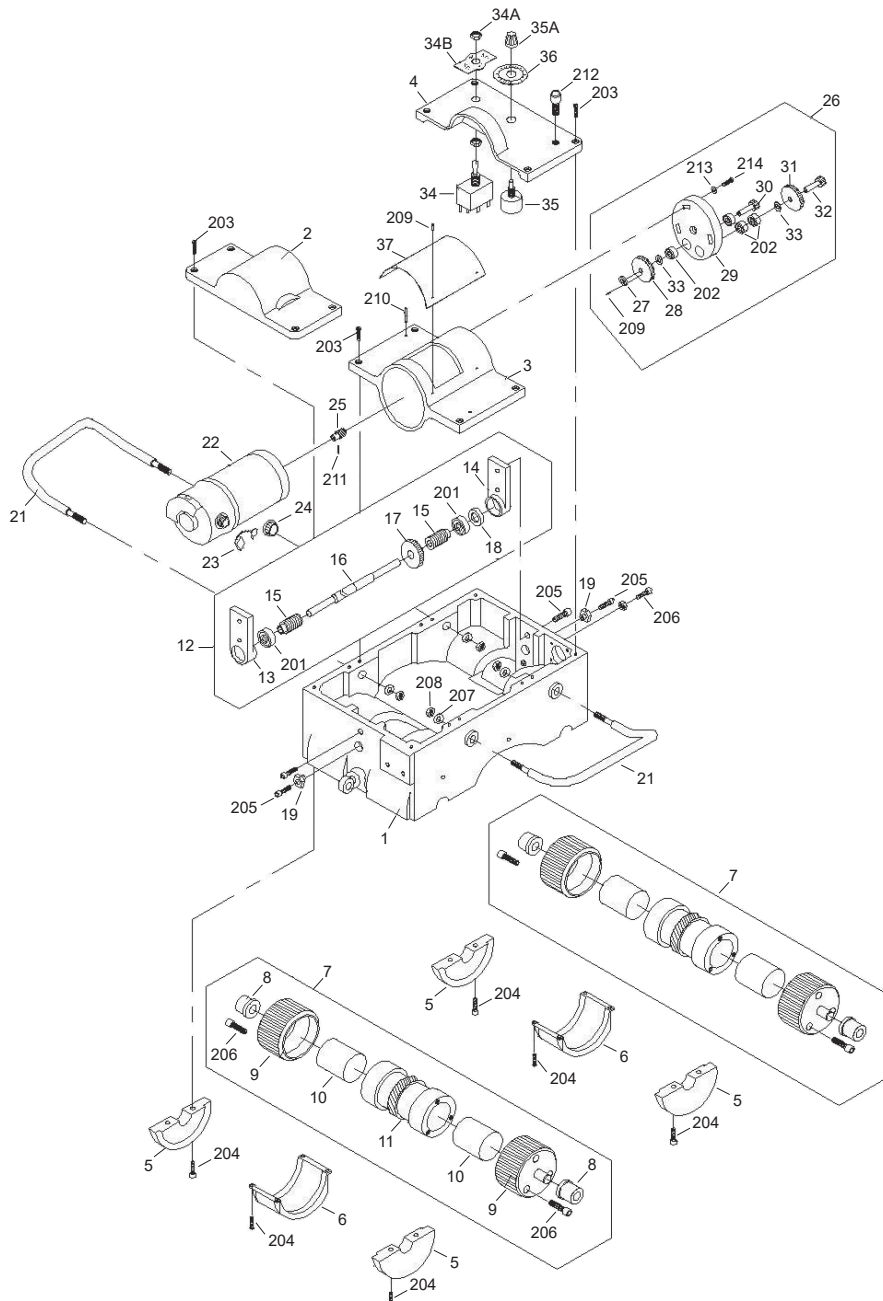
A magnetic pipe gas cutting and beveling machine for pipe over 100mm diameter, with four magnetic roller/wheels with 50kg of magnetic force to ensure attachment to pipe and a steady smooth travel, with little deviation which operating.

The unit is set up for oxy-acet cutting with a cutting capacity of 6-50mm thickness. With a guide band option for pipe up to 600mm to ensure tracking. This band can be joined to allow larger diameter pipe to be cut while using the band guide.

The optional guard rail unit provides high cutting accuracy and makes the MAGNAPIPE-Style pipe cutting machine particularly suitable for large pipes. The fixed guide rail also makes it possible to cut vertical pipe.

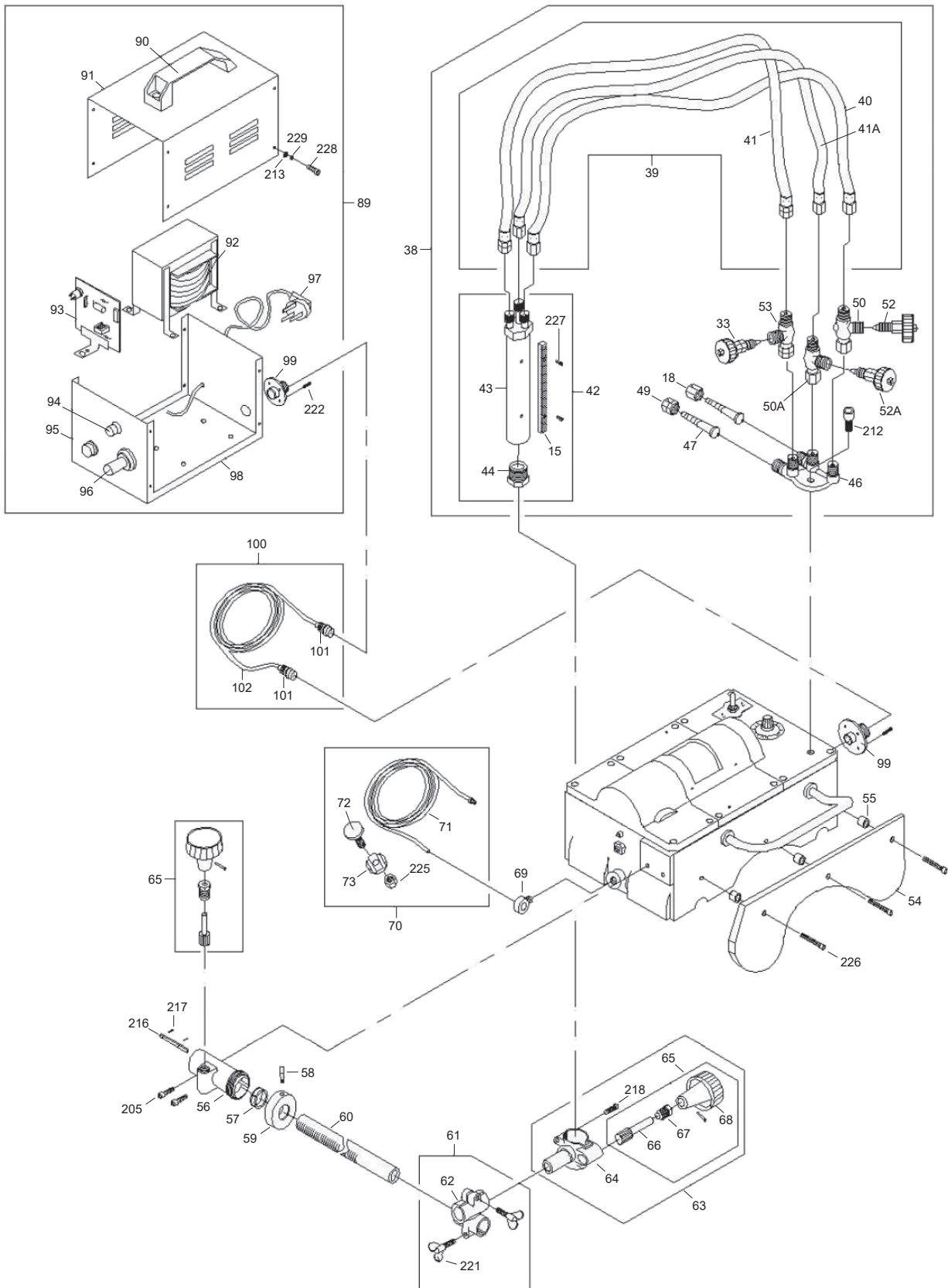
Part No.	Description	Pur.	Pk
GC2-11	Magnetic pipe cutting machine	1	1

Gas Champ Magnetic Pipe Cutting Machine Breakdown



GAS EQUIPMENT

Gas Champ Magnetic Pipe Cutting Machine Breakdown



GAS EQUIPMENT

Gas Champ Magnetic Pipe Cutting Machine GC2-11 Spare Parts

Part No.	Description	Pur.	Pk
1	1211-001	Body case	TBC TBC
2	1211-002	Rear motor cover	TBC TBC
3	1211-003	Motor holder	TBC TBC
4	1211-004	Reducer cover	TBC TBC
5	1211-005	Copper gland	TBC TBC
6	1211-006	Dust-proof cover	TBC TBC
7	1211-007	Magnetic roller assembly	TBC TBC
8	1211-008	Roller shaft sleeve	TBC TBC
9	1211-009	Magnetic roller	TBC TBC
10	1211-010	Magnetic block	TBC TBC
11	1211-011	Magnetic block holder	TBC TBC
12	1211-012	Drive worm shaft assembly	TBC TBC
13	1211-013	Front bearing seat	TBC TBC
14	1211-014	Rear bearing seat	TBC TBC
15	1211-015	Worm shaft	TBC TBC
16	1211-016	Small drive shaft	TBC TBC
17	1211-017	Passive pinion	TBC TBC
18	1211-018	Bearing gland	TBC TBC
19	1211-019	Excursion adjustor	TBC TBC
20	1211-020	Handle seat	TBC TBC
21	1211-021	Handle	TBC TBC
22	1211-022	Motor	TBC TBC
23	1211-023	Carbon brush	TBC TBC
24	1211-024	Carbon cap	TBC TBC
25	1211-025	Motor pinion	TBC TBC
26	1211-026	Reducer gear assembly	TBC TBC
27	1211-027	Pinion retainer	TBC TBC
28	1211-028	Pinion	TBC TBC
29	1211-029	Reducer disc	TBC TBC
30	1211-030	Drive pinion	TBC TBC
31	1211-031	Flat pinion	TBC TBC
32	1211-032	Output pinion	TBC TBC
33	1211-033	Washer	TBC TBC
34	1211-034	Forward/back switch	TBC TBC
34A	1211-034A	Switch handle nut	TBC TBC
34B	1211-034B	Switch indicator plate	TBC TBC
35	1211-035	Condenser	TBC TBC
35A	1211-035A	Condenser cap	TBC TBC
36	1211-036	Speed dial	TBC TBC
37	1211-037	Technical plate	TBC TBC
38	1211-038	Gas distributor assembly	TBC TBC
39	1211-039	Hoses assembly	TBC TBC
40	1211-040	Preheat oxygen hose	TBC TBC
41	1211-041	Cutting oxygen hose	TBC TBC
41A	1211-041	Fuel gas hose	TBC TBC
42	1211-042	Torch assembly	TBC TBC
43	1211-043	Torch	TBC TBC
44	1211-044	Torch nut	TBC TBC
45	1211-045	Flat rack	TBC TBC
46	1211-046	Gas distributor	TBC TBC
47	1211-047	Inlet nipple	TBC TBC
48	1211-048	Oxygen inlet nut	TBC TBC
49	1211-049	Fuel gas inlet nut	TBC TBC
50	1211-050	Oxygen valve body	TBC TBC
51	1211-051	Oxygen valve needle	TBC TBC
51A	1211-051A	Oxygen valve	TBC TBC
52	1211-052	Fuel gas valve body	TBC TBC
53	1211-053	Fuel gas valve needle	TBC TBC
53A	1211-053A	Fuel gas valve	TBC TBC
54	1211-054	Heat shield plate	TBC TBC

Part No.	Description	Pur.	Pk
55	1211-055	Collar	TBC TBC
56	1211-056	Cross feed seat	TBC TBC
57	1211-057	Locking collar	TBC TBC
58	1211-058	Locking pin	TBC TBC
59	1211-059	Locking nut	TBC TBC
60	1211-060	Cross feed rack bar	TBC TBC
61	1211-061	Rack bar holder assembly	TBC TBC
62	1211-062	Rack bar holder	TBC TBC
63	1211-063	Torch holder assembly	TBC TBC
64	1211-064	Torch holder	TBC TBC
65	1211-065	Pinion assembly	TBC TBC
66	1211-066	Pinion shaft	TBC TBC
67	1211-067	Pinion gland	TBC TBC
68	1211-068	Handle wheel	TBC TBC
69	1211-069	Fuse buckle	TBC TBC
70	1211-070	Fuse assembly	TBC TBC
71	1211-071	Steel wire	TBC TBC
72	1211-072	Tightening screw	TBC TBC
73	1211-073	Steel wire buckle	TBC TBC
74	1211-074	Steel belt assembly	TBC TBC
75	1211-075	Steel belt	TBC TBC
76	1211-076	Steel belt roller	TBC TBC
77	1211-077	Steel belt roller shaft	TBC TBC
78	1211-078	Steel belt fixing shaft	TBC TBC
79	1211-079	Locking cap	TBC TBC
80	1211-080	Connecting shaft	TBC TBC
81	1211-081	Connecting seat	TBC TBC
82	1211-082	Steel belt locating block	TBC TBC
83	1211-083	Steel belt fixing bolt	TBC TBC
84	1211-084	Locking seat	TBC TBC
85	1211-085	Fixing rack bar	TBC TBC
86	1211-086	Rack bar holder	TBC TBC
87	1211-087	Shifting seat	TBC TBC
88	1211-088	Jointer	TBC TBC
89	1211-089	Electrical box assembly	TBC TBC
90	1211-090	Electrical box handle	TBC TBC
91	1211-091	Electrical box cover	TBC TBC
92	1211-092	Transformer	TBC TBC
93	1211-093	Circuit board	TBC TBC
94	1211-094	Power indicator	TBC TBC
95	1211-095	Fuse unit	TBC TBC
96	1211-096	Power switch	TBC TBC
97	1211-097	Rubber plug	TBC TBC
98	1211-098	Electrical box bottom case	TBC TBC
99	1211-099	Power cord assembly	TBC TBC
100	1211-100	Rear motor cover	TBC TBC
101	1211-101	Power plug	TBC TBC
102	1211-102	Power cord	TBC TBC
201	1211-201	Bearing 608	TBC TBC
202	1211-202	Bearing 686	TBC TBC
203	1211-203	Socket cap screw M4	1 1
204	1211-204	Hexagonal socket screw M5	1 1
205	1211-205	Hexagonal socket screw M5	1 1
206	1211-206	Hexagonal socket screw M6	2 2
207	1211-207	Collar Ø6	TBC TBC
208	1211-208	Hexagonal bolt M6	TBC TBC
209	1211-209	Rivet Ø2*8	TBC TBC
210	1211-210	Straight pin Ø3*16	TBC TBC
211	1211-211	Elastic straight pin Ø2.5*12	TBC TBC
212	1211-212	Hexagonal socket screw M8	2 2

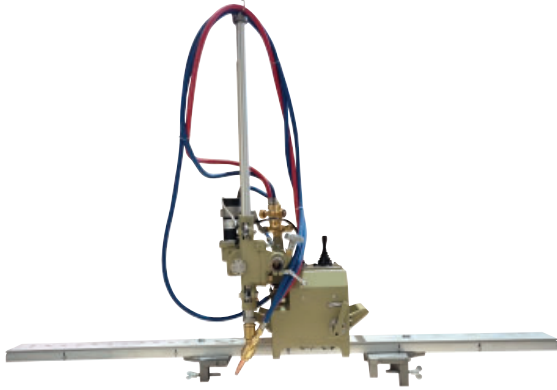
GAS EQUIPMENT

Gas Champ Magnetic Pipe Cutting Machine GC2-11 Spare Parts

Part No.	Description	Pur.	Pk
213	1211-213 Collar Ø4	TBC	TBC
214	1211-214 Socket cap screw M4	20	20
215	1211-215 Elastic straight pin Ø2.5*18	TBC	TBC
216	1211-216 Flat key 5	4	4
217	1211-217 Elastic straight pin Ø2.5*8	TBC	TBC
218	1211-218 Socket cap screw M6	1	1
219	1211-219 Tightening screw M6	1	1
220	1211-220 Countersunk head screw M5	TBC	TBC
221	1211-221 Wing bolt M6	1	1
222	1211-222 Hexagonal socket screw M4	TBC	TBC
223	1211-223 Semi-round head screw M5	1	1
224	1211-224 Hexagonal bolt M10	TBC	TBC
225	1211-225 Hexagonal bolt M8	TBC	TBC
226	1211-226 Hexagonal socket screw M6	3	3
227	1211-227 Socket cap screw M3	6	6
228	1211-228 Semi-round head screw M4	10	10
229	1211-229 Spring washer Ø4	TBC	TBC
230	1211-230 Hexagonal screw M10	3	3
231	1211-231 Bearing 6001	TBC	TBC
232	1211-232 Circlip Ø28	TBC	TBC
233	1211-33 Spring	TBC	TBC

GAS EQUIPMENT

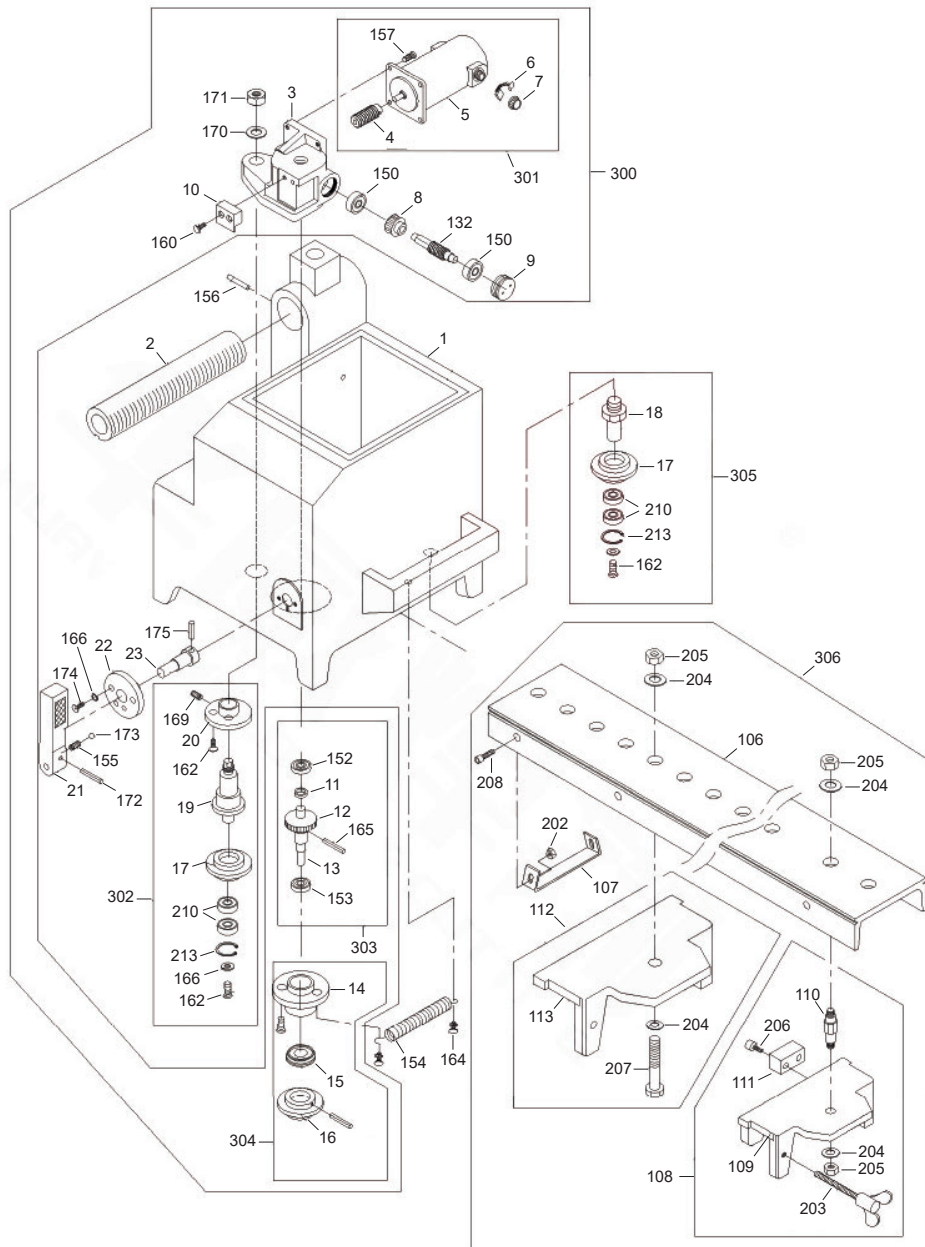
Gas Champ Beam Gas Cutting Machine



- Portable mechanised gas cutting machine
- Cuts flanges and the web
- Reduces clean
- Increase accuracy and productivity
- Cuts, columns, beams, channel angle
- A must for every structural steel workshop

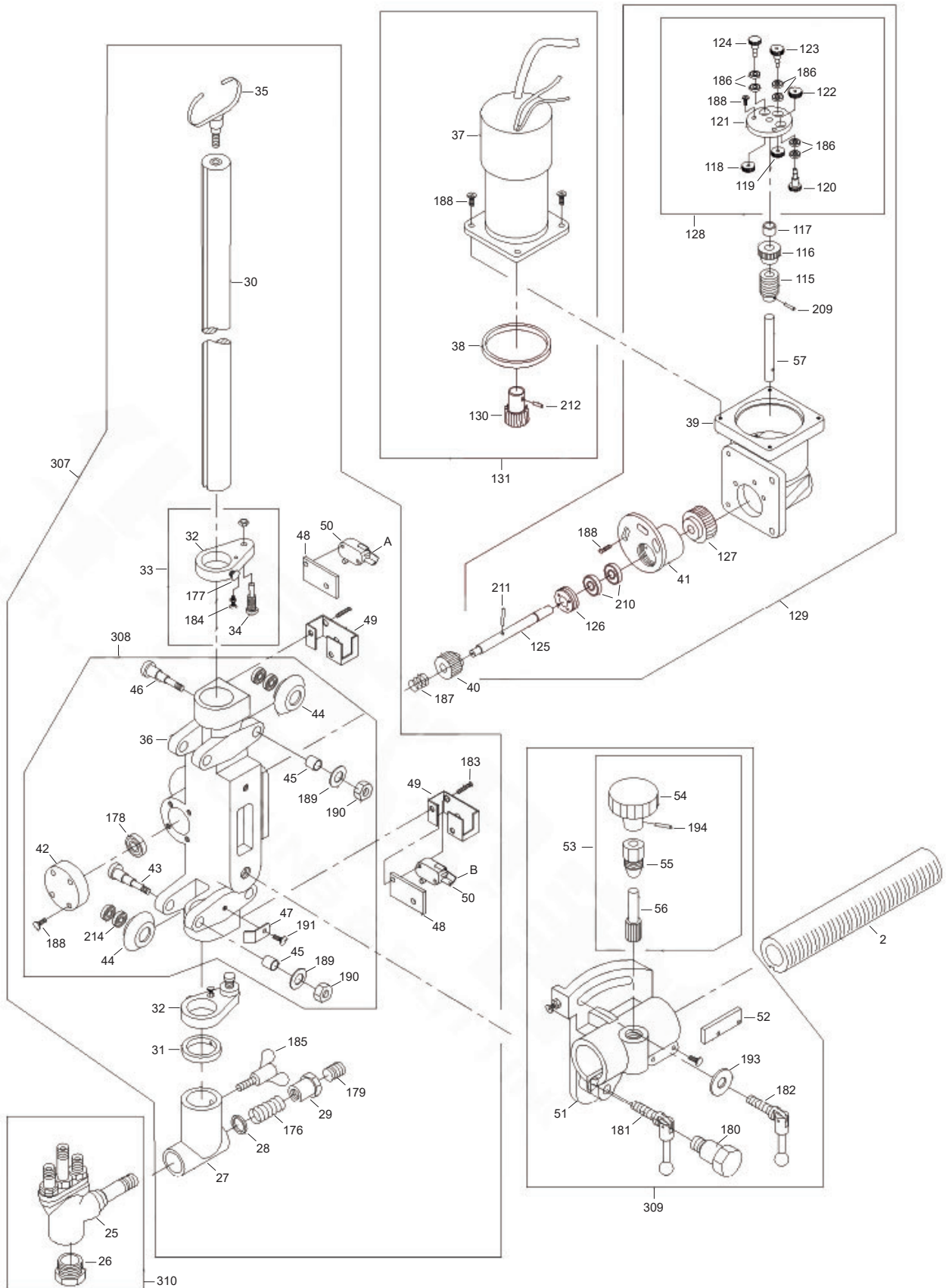
Part No.	Description	Pur.	Pk
GC1-2H	Beam gas cutting machine	1	1

Gas Champ Beam Gas Cutting Machine



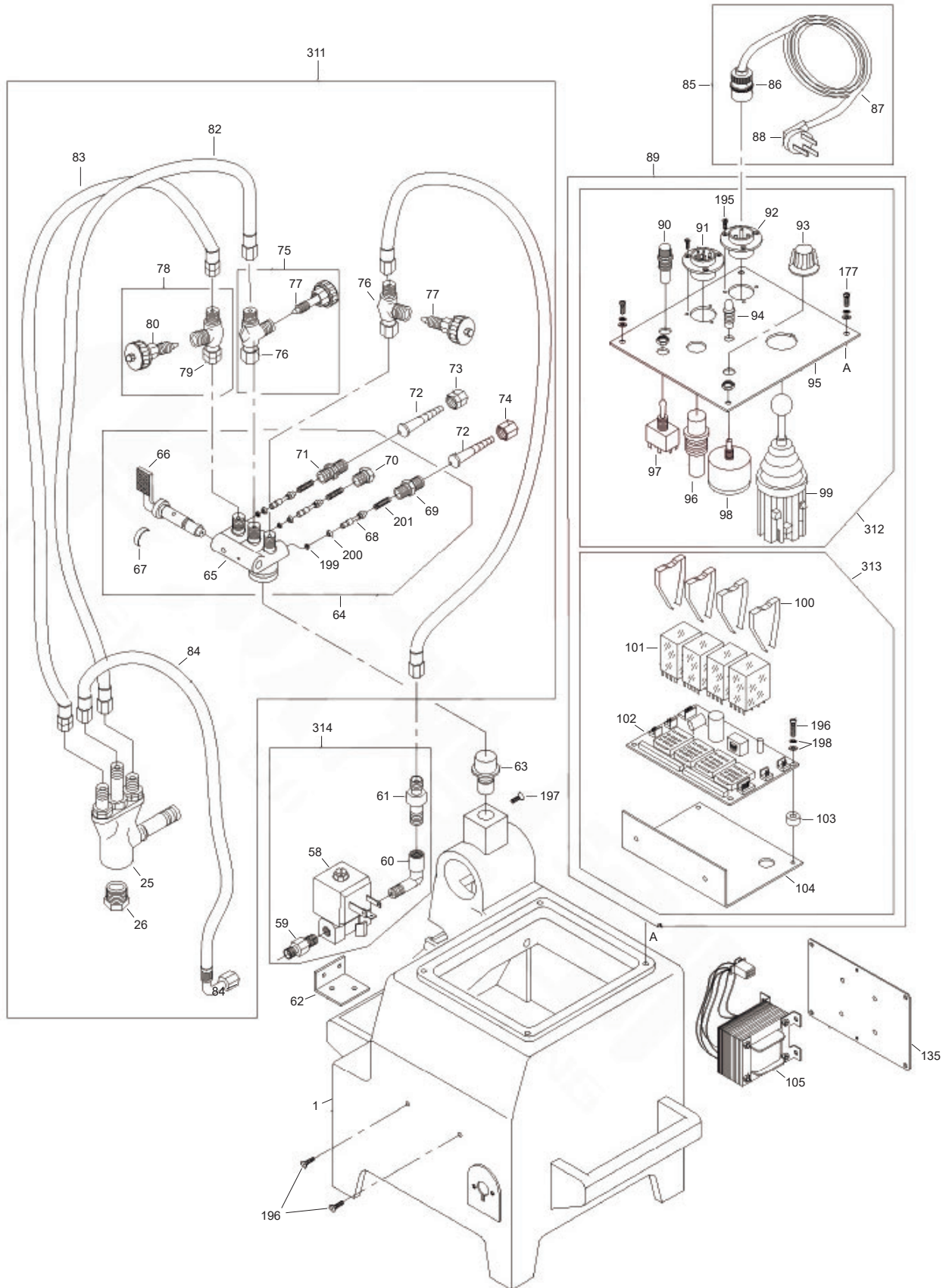
GAS EQUIPMENT

Gas Champ Beam Gas Cutting Machine



GAS EQUIPMENT

Gas Champ Beam Gas Cutting Machine



GAS EQUIPMENT

Gas Champ Beam Gas Cutting Machine Spare Parts

Part No.	Description	Pur.	Pk
1	CG1-2H-1	Main case	TBC TBC
2	CG1-2H-2	Front and rear rack	TBC TBC
3	CG1-2H-3	Reduction box	TBC TBC
4	CG1-2H-4	Motor worm	TBC TBC
5	CG1-2H-5	Motor	TBC TBC
6	CG1-2H-6	Carbon brush	TBC TBC
7	CG1-2H-7	Cover for carbon brush	TBC TBC
8	CG1-2H-8	Driving worm gear	TBC TBC
9	CG1-2H-9	Cover for bearing	TBC TBC
10	CG1-2H-10	Clutch stop	TBC TBC
11	CG1-2H-11	Locating sleeve	TBC TBC
12	CG1-2H-12	Worm gear	TBC TBC
13	CG1-2H-13	Driving shaft	TBC TBC
14	CG1-2H-14	Seat of bearing	TBC TBC
15	CG1-2H-15	Cover for bearing	TBC TBC
16	CG1-2H-16	Driving wheel	TBC TBC
17	CG1-2H-17	Driven wheel	TBC TBC
18	CG1-2H-18	Transverse guide wheel shaft	TBC TBC
19	CG1-2H-19	Eccentric guide wheel shaft	TBC TBC
20	CG1-2H-20	Eccentric shaft seat	TBC TBC
21	CG1-2H-21	Clutch handle	TBC TBC
22	CG1-2H-22	Clutch shaft seat	TBC TBC
23	CG1-2H-23	Clutch shaft	TBC TBC
25	CG1-2H-24	Torch	TBC TBC
26	CG1-2H-25	Nut for cutting nozzle	TBC TBC
27	CG1-2H-26	Connector body	TBC TBC
28	CG1-2H-27	Washer	TBC TBC
29	CG1-2H-28	Lock nut for torch	TBC TBC
30	CG1-2H-29	Bar with rack	TBC TBC
31	CG1-2H-30	Scale ring	TBC TBC
32	CG1-2H-31	Stroke block	TBC TBC
33	CG1-2H-32	Stroke block assy	TBC TBC
34	CG1-2H-33	Shaft	TBC TBC
35	CG1-2H-34	Hook for gas hose	TBC TBC
36	CG1-2H-35	Lifting seat	TBC TBC
37	CG1-2H-36	Motor	TBC TBC
38	CG1-2H-37	Bushing	TBC TBC
39	CG1-2H-38	Gearbox	TBC TBC
40	CG1-2H-39	Lifting gear	TBC TBC
41	CG1-2H-40	Eccentric sleeve	TBC TBC
42	CG1-2H-41	Bearing seat	TBC TBC
43	CG1-2H-42	Eccentric guide wheel shaft	TBC TBC
44	CG1-2H-43	Guide wheel	TBC TBC
45	CG1-2H-44	Shaft sleeve	TBC TBC
46	CG1-2H-45	Guide wheel shaft	TBC TBC
47	CG1-2H-46	Cable holder	TBC TBC
48	CG1-2H-47	Insulating plate	TBC TBC
49	CG1-2H-48	Stroke switch bracket	TBC TBC
50	CG1-2H-49	Stroke switch	TBC TBC
51	CG1-2H-50	Seat of front and rear rack	TBC TBC
52	CG1-2H-51	Pin of seat	TBC TBC
53	CG1-2H-52	Handwheel assembly	TBC TBC
54	CG1-2H-53	Handwheel	TBC TBC
55	CG1-2H-54	Lock nut of handwheel	TBC TBC
56	CG1-2H-55	Handwheel shaft	TBC TBC
57	CG1-2H-56	Worm shaft	TBC TBC
58	CG1-2H-57	Solenoid valve	TBC TBC
59	CG1-2H-58	Gas out connector for solenoid valve	TBC TBC
60	CG1-2H-59	Gas in connector for solenoid valve (90°)	TBC TBC

Part No.	Description	Pur.	Pk
61	CG1-2H-60	Gas in connector for solenoid valve	TBC TBC
62	CG1-2H-61	Mounting plate for solenoid valve	TBC TBC
63	CG1-2H-62	Connector for distributor	TBC TBC
64	CG1-2H-63	Distributor assembly	TBC TBC
65	CG1-2H-64	Distributor body	TBC TBC
66	CG1-2H-65	Quick valve for distributor	TBC TBC
67	CG1-2H-66	Indicator	TBC TBC
68	CG1-2H-67	Valve pin	TBC TBC
69	CG1-2H-68	Connector thread for oxygen	TBC TBC
70	CG1-2H-69	Plug	TBC TBC
71	CG1-2H-70	Connector thread for fuel gas	TBC TBC
72	CG1-2H-71	Gas nipple	TBC TBC
73	CG1-2H-72	Nut for fuel gas	TBC TBC
74	CG1-2H-73	Nut of oxygen	TBC TBC
75	CG1-2H-74	Valve assembly for oxygen	TBC TBC
76	CG1-2H-75	Body of oxygen valve	TBC TBC
77	CG1-2H-76	Valve pin of oxygen valve	TBC TBC
78	CG1-2H-77	Valve assembly for fuel gas	TBC TBC
79	CG1-2H-78	Body of fuel gas valve	TBC TBC
80	CG1-2H-79	Valve pin of fuel gas valve	TBC TBC
81	CG1-2H-80	Gas hose of oxygen	TBC TBC
82	CG1-2H-81	Gas hose of oxygen	TBC TBC
83	CG1-2H-82	Gas hose of fuel gas	TBC TBC
84	CG1-2H-83	Gas hose of oxygen	TBC TBC
85	CG1-2H-84	Power cord assembly	TBC TBC
86	CG1-2H-85	Connector of power cord	TBC TBC
87	CG1-2H-86	Power cord	TBC TBC
88	CG1-2H-87	Electric plug	TBC TBC
89	CG1-2H-88	Electric assembly	TBC TBC
90	CG1-2H-89	Fuse tube	TBC TBC
91	CG1-2H-90	Eight pin socket	TBC TBC
92	CG1-2H-91	Three pin socket	TBC TBC
93	CG1-2H-92	Knob of resistor	TBC TBC
94	CG1-2H-93	Power light	TBC TBC
95	CG1-2H-94	Panel	TBC TBC
96	CG1-2H-95	On/off switch	TBC TBC
97	CG1-2H-96	Reversing switch	TBC TBC
98	CG1-2H-97	Resistor	TBC TBC
99	CG1-2H-98	Switch (four position)	TBC TBC
100	CG1-2H-99	Relay holder	TBC TBC
101	CG1-2H-100	Relay	TBC TBC
102	CG1-2H-101	PCB	TBC TBC
103	CG1-2H-102	Bakelight tube	TBC TBC
104	CG1-2H-103	Mounting plate of PCB	TBC TBC
105	CG1-2H-104	Transformer	TBC TBC
106	CG1-2H-105	Guide rail	TBC TBC
107	CG1-2H-106	Stiffener	TBC TBC
108	CG1-2H-107	Main fixing plate assembly of guide rail	TBC TBC
109	CG1-2H-108	Main fixing plate of guide rail	TBC TBC
110	CG1-2H-109	Screw	TBC TBC
111	CG1-2H-110	Stop dog	TBC TBC
112	CG1-2H-111	Auxiliary fixing plate assy of guide rail	TBC TBC
113	CG1-2H-112	Auxiliary fixing plate of guide rail	TBC TBC
115	CG1-2H-113	Worm	TBC TBC
116	CG1-2H-114	Worm gear	TBC TBC
117	CG1-2H-115	Worm positioning sleeve	TBC TBC
118	CG1-2H-116	Driving gear	TBC TBC
119	CG1-2H-117	Passive gear	TBC TBC
120	CG1-2H-118	Drive shaft gear	TBC TBC

GAS EQUIPMENT

Gas Champ Beam Gas Cutting Machine Spare Parts

Part No.	Description	Pur.	Pk
121	CG1-2H-119	Decelerating disc	TBC TBC
122	CG1-2H-120	Drive gear	TBC TBC
123	CG1-2H-121	Passive shaft gear	TBC TBC
124	CG1-2H-122	Drive shaft gear	TBC TBC
125	CG1-2H-123	Shaft	TBC TBC
126	CG1-2H-124	Lock cover of bearing	TBC TBC
127	CG1-2H-125	Worn gear	TBC TBC
128	CG1-2H-126	Decelerating disc assembly	TBC TBC
129	CG1-2H-127	Gearbox assembly	TBC TBC
130	CG1-2H-128	Motor gear	TBC TBC
131	CG1-2H-129	Motor assembly	TBC TBC
135	CG1-2H-130	Mount plate of transformer	TBC TBC
150	CG1-2H-131	Bearing	TBC TBC
152	CG1-2H-132	Bearing	TBC TBC
153	CG1-2H-133	Bearing	TBC TBC
154	CG1-2H-134	Tension spring	TBC TBC
155	CG1-2H-135	Spring	TBC TBC
156	CG1-2H-136	Pin	TBC TBC
157	CG1-2H-137	Screw	TBC TBC
160	CG1-2H-138	Screw	TBC TBC
162	CG1-2H-139	Screw	TBC TBC
164	CG1-2H-140	Screw	TBC TBC
165	CG1-2H-141	Pin	TBC TBC
166	CG1-2H-142	Washer	TBC TBC
169	CG1-2H-143	Screw	TBC TBC
170	CG1-2H-144	Washer	TBC TBC
171	CG1-2H-145	Nut	TBC TBC
172	CG1-2H-146	Pin	TBC TBC
173	CG1-2H-147	Steel ball	TBC TBC
174	CG1-2H-148	Screw	TBC TBC
175	CG1-2H-149	Pin	TBC TBC
176	CG1-2H-150	Spring	TBC TBC
177	CG1-2H-151	Screw	TBC TBC
178	CG1-2H-152	Bearing	TBC TBC
179	CG1-2H-153	Screw	TBC TBC
180	CG1-2H-154	Screw	TBC TBC
181	CG1-2H-155	Screw	TBC TBC
182	CG1-2H-156	Screw	TBC TBC
183	CG1-2H-157	Screw	TBC TBC
184	CG1-2H-158	Screw	TBC TBC
185	CG1-2H-159	Butterfly screw	TBC TBC
186	CG1-2H-160	Bearing	TBC TBC
187	CG1-2H-161	Spring	TBC TBC
188	CG1-2H-162	Screw	TBC TBC
189	CG1-2H-163	Washer	TBC TBC
190	CG1-2H-164	Nut	TBC TBC
191	CG1-2H-165	Screw	TBC TBC
193	CG1-2H-166	Washer	TBC TBC
194	CG1-2H-167	Pin	TBC TBC
195	CG1-2H-168	Screw	TBC TBC
196	CG1-2H-169	Screw	TBC TBC
197	CG1-2H-170	Screw	TBC TBC
198	CG1-2H-171	Washer	TBC TBC
199	CG1-2H-172	O'ring	TBC TBC
200	CG1-2H-173	Bowl ring	TBC TBC
201	CG1-2H-174	Spring	TBC TBC
202	CG1-2H-175	Nut	TBC TBC
203	CG1-2H-176	Butterfly screw	TBC TBC
204	CG1-2H-177	Washer	TBC TBC
205	CG1-2H-178	Nut	TBC TBC

Part No.	Description	Pur.	Pk
206	CG1-2H-179	Screw	TBC TBC
207	CG1-2H-180	Screw	TBC TBC
208	CG1-2H-181	Screw	TBC TBC
209	CG1-2H-182	Pin	TBC TBC
210	CG1-2H-183	Bearing	TBC TBC
211	CG1-2H-184	Pin	TBC TBC
212	CG1-2H-185	Pin	TBC TBC
213	CG1-2H-186	Circlip	TBC TBC
214	CG1-2H-187	Bearing	TBC TBC
300	CG1-2H-188	Drive assembly	TBC TBC
301	CG1-2H-189	Motor assembly	TBC TBC
302	CG1-2H-190	Eccentric wheel assembly	TBC TBC
303	CG1-2H-191	Output worm gear assembly	TBC TBC
304	CG1-2H-192	Drive wheel assembly	TBC TBC
305	CG1-2H-193	Passive wheel assembly	TBC TBC
306	CG1-2H-194	Track assembly	TBC TBC
307	CG1-2H-195	Upper and lower moving assembly	TBC TBC
308	CG1-2H-196	The rising and falling body assembly	TBC TBC
309	CG1-2H-197	Torch transverse transfer seat assy	TBC TBC
310	CG1-2H-198	Torch assembly	TBC TBC
311	CG1-2H-199	Torch and gas parts assembly	TBC TBC
312	CG1-2H-200	Control panel assembly	TBC TBC
313	CG1-2H-201	PCB assembly	TBC TBC
314	CG1-2H-202=	Solenoid valve assembly	TBC TBC

GAS EQUIPMENT

106 (Standard Speed) for LPG (inches)

Plate Thickness	Tip Size	Cutting Speed in/min	Oxygen Pressure		Fuel Gas Pressure	Kerf Width
			Cutting	Pre-Heat		
1/8"	00	27	20	20	2.8	0.04
1/4"	0	24	30	30	2.8	0.05
3/8"	0	22	30	30	2.8	0.06
1/2"	1	21	40	40	2.8	0.07
3/4"	2	18	45	45	3.6	0.08
1"	2	17	45	45	3.6	0.08
1 1/2"	3	14	45	45	3.6	0.09
2"	4	12.5	45	45	4.3	0.11
2 1/2"	5	11	55	55	4.3	0.12
3"	5	10	55	55	4.3	0.12
4"	6	8	55	55	5.7	0.14
5"	6	7	55	55	5.7	0.14
6"	7	6	65	65	5.7	0.16
8"	7	5	65	65	5.7	0.17
10"	8	3	65	65	5.7	0.23
12"	8	2	65	65	5.7	0.27

106 (Standard Speed) for LPG (Metric)

Plate Thickness	Tip Size	Pressure (kg/cm ²)		Consumption NI/hr			Cutting Speed mm/min
		Oxygen	Fuel Gas	Cutting Oxygen	Pre-Heat Oxygen	Fuel Gas	
0 - 5 mm	00	1.5	0.2	690	1180	310	660
5 - 10 mm	0	2.0	0.2	1200	1180	310	660 - 550
10 - 15 mm	1	2.5	0.2	2100	1180	310	550 - 490
15 - 30 mm	2	3.0	0.25	3400	1370	360	490 - 400
30 - 40 mm	3	3.0	0.25	4300	1370	360	400 - 350
40 - 50 mm	4	3.5	0.3	6500	1860	490	350 - 320
50 - 100 mm	5	4.0	0.3	11000	1860	490	320 - 200
100 - 150 mm	6	4.0	0.3	15000	3040	800	200 - 150
150 - 250 mm	7	4.5	0.4	22000	3720	980	150 - 80
250 - 300 mm	8	4.5	0.4	28000	3720	980	80 - 45

106D7 (High Speed) for LPG (inches)

Plate Thickness	Tip Size	Cutting Speed in/min	Oxygen Pressure		Fuel Gas Pressure	Kerf Width
			Cutting	Pre-heat		
1/8"	00	31.5	100	20	2.8	0.03
1/4"	0	29	100	30	2.8	0.04
3/8"	0	27	100	30	2.8	0.05
1/2"	1	25	100	40	2.8	0.05
3/4"	2	22	100	45	3.6	0.06
1"	2	20	100	45	3.6	0.07
1 1/2"	3	18	100	45	3.6	0.08
2"	4	16	100	45	4.3	0.10
2 1/2"	5	14	100	55	4.3	0.11
3"	5	12.5	100	55	4.3	0.11
4"	6	10	100	55	5.7	0.13
5"	6	9	100	55	5.7	0.14
6"	7	7	100	65	5.7	0.14
8"	7	5.5	100	65	5.7	0.18
10"	8	4	100	65	5.7	0.20
12"	8	3	100	65	5.7	0.24

GAS EQUIPMENT

106D7 (High Speed) for LPG (Metric)

Plate Thickness	Tip Size	Pressure (kg/cm ²)		Consumption NI/hr			Cutting Speed mm/min
		Oxygen	Fuel Gas	Cutting Oxygen	Pre-heat Oxygen	Fuel Gas	
0 - 5 mm	00	7.0	0.2	750	1180	310	750
5 - 10 mm	0	7.0	0.2	1100	1180	310	750 - 680
10 - 15 mm	1	7.0	0.2	2500	1180	310	680 - 600
15 - 30 mm	2	7.0	0.25	3800	1370	360	600 - 500
30 - 40 mm	3	7.0	0.25	5400	1370	360	500 - 450
40 - 50 mm	4	7.0	0.3	7300	1860	490	450 - 400
50 - 100 mm	5	7.0	0.3	10000	1860	490	400 - 260
100 - 150 mm	6	7.0	0.3	14000	3040	800	260 - 180
150 - 250 mm	7	7.0	0.4	22000	3720	980	180 - 100
250 - 300 mm	8	7.0	0.4	35000	3720	980	100 - 70

102 (Standard Speed) for Acetylene (inches)

Plate Thickness	Tip Size	Cutting Speed in/min	Oxygen Pressure		Fuel Gas Pressure	Kerf Width
			Cutting	PreHeat		
1/8"	00	27	20	20	2.8	0.04
1/4"	0	24	30	30	2.8	0.05
3/8"	0	22	30	30	2.8	0.06
1/2"	1	21	40	40	2.8	0.07
3/4"	2	18	45	45	2.8	0.08
1"	2	17	45	45	2.8	0.08
1 1/2"	3	14	45	45	2.8	0.09
2"	4	12.5	45	45	3.6	0.11
2 1/2"	5	11	55	55	4.3	0.12
3"	5	10	55	55	4.3	0.12
4"	6	8	55	55	5.0	0.14
5"	6	7	55	55	5.0	0.14
6"	7	6	65	65	5.7	0.16
8"	7	5	65	65	5.7	0.17
10"	8	3	65	65	5.7	0.23
12"	8	2	65	65	5.7	0.27

102 (Standard Speed) for Acetylene (Metric)

Plate Thickness	Tip Size	Pressure (kg/cm ²)		Consumption NI/hr			Cutting Speed mm/min
		Oxygen	Fuel Gas	Cutting Oxygen	Pre-Heat Oxygen	Fuel Gas	
0 - 5 mm	00	1.5	0.2	690	410	370	660
5 - 10 mm	0	2.0	0.2	1200	410	370	660 - 550
10 - 15 mm	1	2.5	0.2	2100	480	430	550 - 490
15 - 30 mm	2	3.0	0.2	3400	480	430	490 - 400
30 - 40 mm	3	3.0	0.2	4300	480	430	400 - 350
40 - 50 mm	4	3.5	0.25	6500	550	500	350 - 320
50 - 100 mm	5	4.0	0.3	11000	690	630	320 - 200
100 - 150 mm	6	4.0	0.35	15000	770	700	200 - 150
150 - 250 mm	7	4.5	0.4	22000	1060	960	150 - 80
250 - 300 mm	8	4.5	0.4	28000	1060	960	80 - 45

GAS EQUIPMENT

102D7 (High Speed) for Acetylene (inches)

Plate Thickness	Tip Size	Cutting Speed in/min	Oxygen Pressure		Fuel Gas Pressure	Kerf Width
			Cutting	Pre-Heat		
1/8"	00	31.5	100	20	2.8	0.03
1/4"	0	29	100	30	2.8	0.04
3/8"	0	27	100	30	2.8	0.05
1/2"	1	25	100	40	2.8	0.05
3/4"	2	22	100	45	2.8	0.06
1"	2	20	100	45	2.8	0.07
1 1/2"	3	18	100	45	2.8	0.08
2"	4	16	100	45	2.8	0.10
2 1/2"	5	14	100	55	3.6	0.11
3"	5	12.5	100	55	3.6	0.11
4"	6	10	100	55	4.3	0.13
5"	6	9	100	55	4.3	0.14
6"	7	7	100	65	4.3	0.14
8"	7	5.5	100	65	4.3	0.18
10"	8	4	100	65	5.7	0.20
12"	8	3	100	65	5.7	0.24

102D7 (High Speed) for Acetylene (Metric)

Plate Thickness	Tip Size	Pressure (kg/cm ²)		Consumption NI/hr			Cutting Speed mm/min
		Oxygen	Fuel Gas	Cutting Oxygen	Pre-Heat Oxygen	Fuel Gas	
0 - 5 mm	00	7.0	0.2	750	520	470	750
5 - 10 mm	0	7.0	0.2	1100	520	470	750 - 680
10 - 15 mm	1	7.0	0.2	2500	600	550	680 - 600
15 - 30 mm	2	7.0	0.2	3800	600	550	600 - 500
30 - 40 mm	3	7.0	0.2	5400	600	550	500 - 450
40 - 50 mm	4	7.0	0.2	7300	750	680	450 - 400
50 - 100 mm	5	7.0	0.25	10000	860	780	400 - 260
100 - 150 mm	6	7.0	0.3	14000	950	860	260 - 180
150 - 250 mm	7	7.0	0.3	22000	1330	1210	180 - 100
250 - 300 mm	8	7.0	0.4	35000	1600	1450	100 - 70

3 Seat Tip Cross Reference ACET

Acetylene Standard 3 Seat Tip GO2

Part No.	Cutting Capacity	Reference
GO2-00	0 - 5 mm	102-00
GO2-0	5 - 10 mm	102-0
GO2-1	10 - 15 mm	102-1
GO2-2	15 - 30 mm	102-2
GO2-3	30 - 40 mm	102-3
GO2-4	40 - 50 mm	102-4
GO2-5	50 - 100 mm	102-5
GO2-6	100 - 150 mm	102-6

Acetylene High Speed 3 Seat Tip GK1

GK1-0	5 - 10 mm	102D7-0
GK1-1	10 - 15 mm	102D7-1
GK1-2	15 - 30 mm	102D7-2
GK1-3	30 - 40 mm	102D7-3
GK1-4	40 - 50 mm	102D7-4
GK1-5	50 - 100 mm	102D7-5
GK1-6	100 - 150 mm	102D7-6

3 Seat Tip Cross Reference LPG

LPG Standard 3 Seat Tip GO3

Part No.	Cutting Capacity	Reference
GO3-00	0 - 5 mm	106-00
GO3-0	5 - 10 mm	106-0
GO3-1	10 - 15 mm	106-1
GO3-2	15 - 30 mm	106-2
GO3-3	30 - 40 mm	106-3
GO3-4	40 - 50 mm	106-4
GO3-5	50 - 100 mm	106-5
GO3-6	100 - 150 mm	106-6

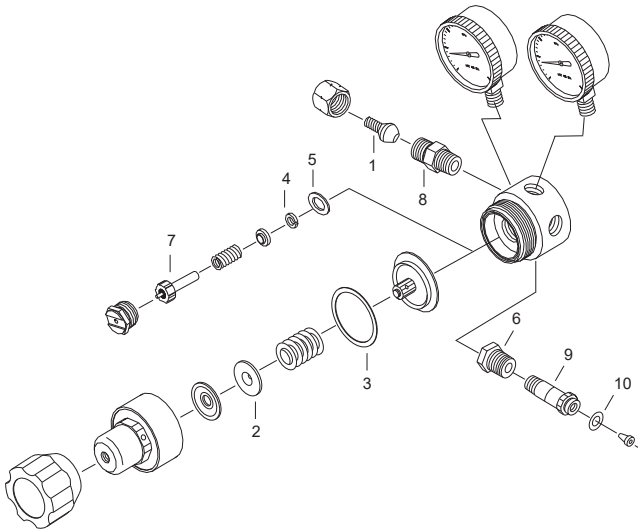
LPG High Speed 3 Seat Tip GK3

GK3-00	0 - 5 mm	106D7-00
GK3-0	5 - 10 mm	106D7-0
GK3-1	10 - 15 mm	106D7-1
GK3-2	15 - 30 mm	106D7-2
GK3-3	30 - 40 mm	106D7-3
GK3-4	40 - 50 mm	106D7-4
GK3-5	50 - 100 mm	106D7-5
GK3-6	100 - 150 mm	106D7-6

GAS EQUIPMENT

Regulator Argon

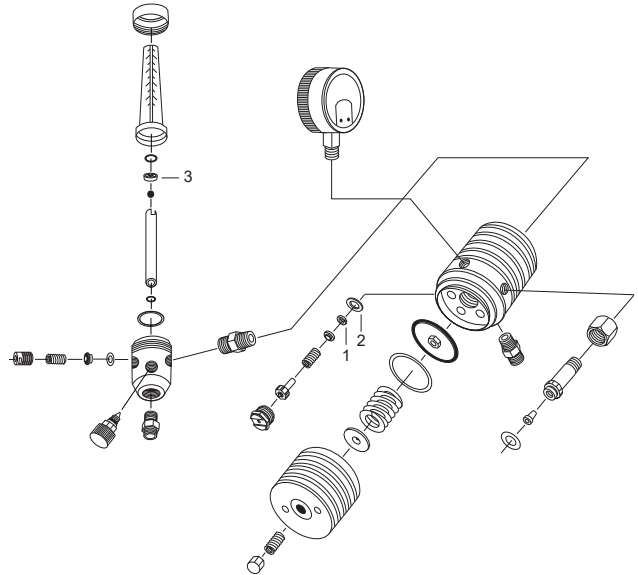
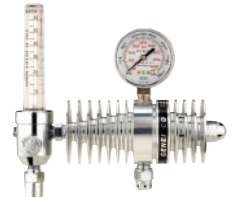
Gentec quality argon regulators and flow meter/ regulators offer real value for money with precision gas flow. 5 cm (2") gauges for easy reading. Safety back gauges conform to AUST. STD.



Part No.	Description	Pur.	Pk
190AR	Regulator argon	1	1
1	53N10A Hose nipple	10	10
2	R110-06 Spring button	1	1
3	R110-08 Slip ring	1	1
4	R110-37 Friction washer	1	1
5	R110-38 Nozzle gasket	1	1
6	R120-54B Inlet nut	1	1
7	R120-83 Seat assembly	1	1
8	R190-52C Outlet connection	1	1
9	R230-55 Inlet seat assembly	1	1
	R230-55L Spigot long	1	1
10	R570-66 Nipple o'ring	1	1

Flowmeter CO2 Radiator

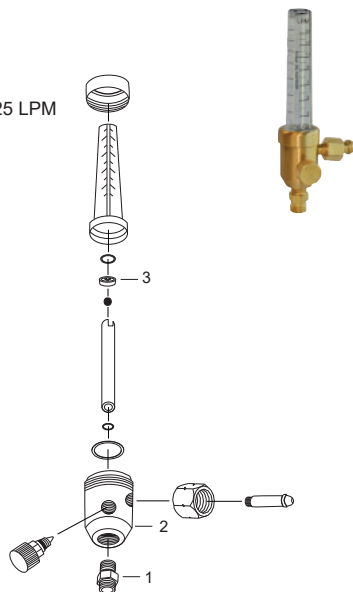
- Delivery Pressure 350 KPA
- Delivery Flow 25 LPM
- Inlet Gauge 28,000 KPA
- Inlet Connection 0.857-14 RH(F)
- Outlet Connection 16 mm (5/8") -18 RH (M)
- CO² Seat & nut



Part No.	Description	Pur.	Pk
199CR-IW	Regulator CO ² radiator	1	1
1	R110-37 Friction washer	1	1
2	R110-38 Nozzle gasket	1	1
3	R195-73 Washer, flowmeter	1	1

Flowmeter

- Available in 15 LPM or 25 LPM
- Inlet 16 mm (5/8")
- Outlet 16 mm (5/8")
- Max inlet 20,000 KPA

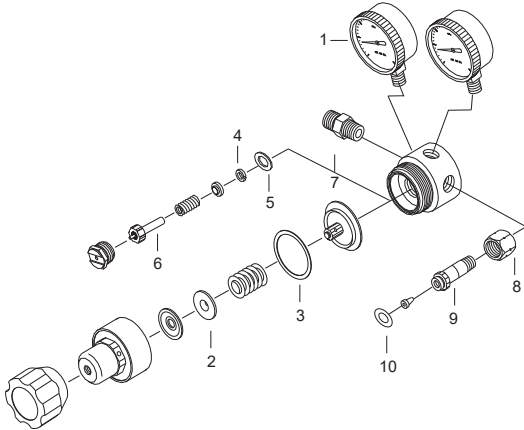


Part No.	Description	Pur.	Pk
195FM	Flowmeter only 15 LPM	1	1
195FM25	Flowmeter only 25 LPM	1	1
1	R120-51 Outlet connection	1	1
2	R195-59B Flowmeter body	1	1
3	R195-73 Washer	1	1

GAS EQUIPMENT

Regulator CO2

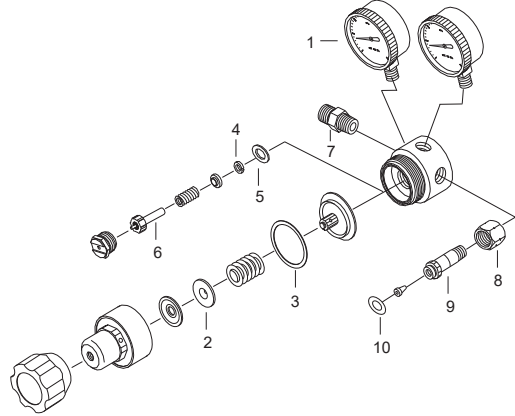
- Conforms to AS 4267
- Max Inlet Pressure 20,000 KPA
- Delivery Flow 25 LPM
- Inlet Gauge 28,000 KPA
- Inlet Connection 0.857-14 RH(F)
- Outlet Connection 16 mm (5/8") -18 RH (M)
- Flat CO² seat & nut



Part No.	Description	Pur.	Pk
190CR	Regulator CO ²	1	1
1	G20-050CFH Flow gauge	1	1
2	R110-06 Spring button	1	1
3	R110-08 Slip ring	1	1
4	R110-37 Friction washer	1	1
5	R110-38 Nozzle gasket	1	1
6	R120-83 Seat assembly	1	1
7	R190-52C Outlet connection	1	1
8	R190-57A Inlet nut	1	1
9	R190-58A Inlet stem	1	1
10	R190-59A Washer	1	1

Regulator Beer

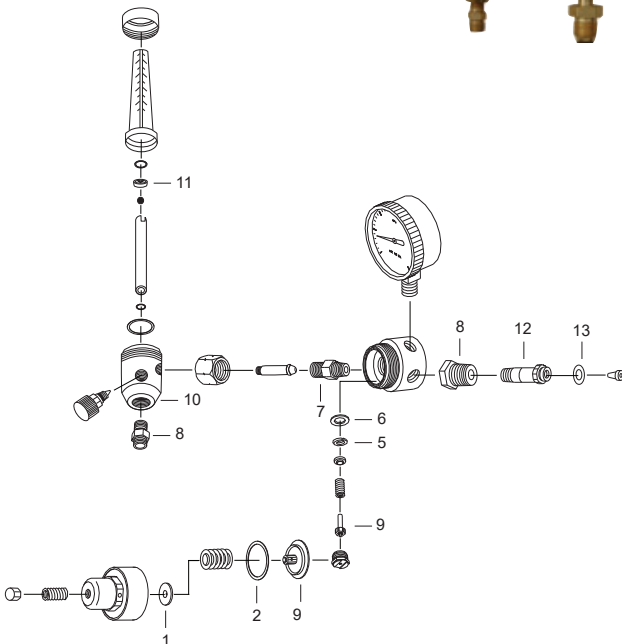
- Conforms to AS 4267
- Max Inlet Pressure 20,000 KPA
- Delivery Flow 25 LPM
- Inlet Gauge 28,000 KPA
- Inlet Connection 0.857-14 RH(F)
- Outlet Connection 16 mm (5/8") -18 RH (M)



Part No.	Description	Pur.	Pk
190CR-100	Regulator beer	1	1
1	G20-1000A Flow gauge	1	1
2	R110-06 Spring button	1	1
3	R110-08 Slip ring	1	1
4	R110-37 Friction washer	1	1
5	R110-38 Nozzle gasket	1	1
6	R120-83 Seat assembly	1	1
7	R190-52C Outlet connection	1	1
8	R190-57A Inlet nut	1	1
9	R190-58A Inlet stem	1	1
10	R190-59A Washer	1	1

Regulator Flowmeter

Precision gas flow. 5 cm (2") gauges for easy reading. Safety back gauges conform to AUST. STD.

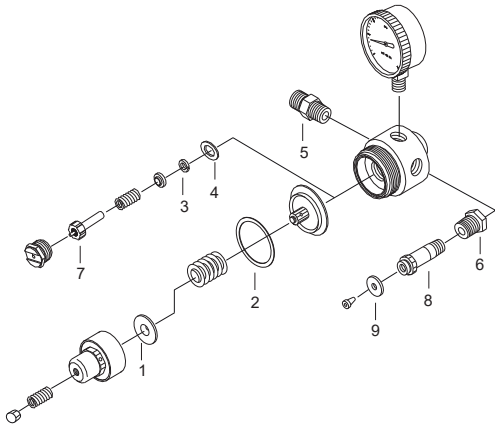


Part No.	Description	Pur.	Pk
195	Regulator flowmeter 15 LPM	1	1
195AR	Regulator flowmeter 25 LPM	1	1
1	R110-06 Spring button	1	1
2	R110-08 Slip ring	1	1
5	R110-37 Friction washer	1	1
6	R110-38 Nozzle gasket	1	1
7	R120-51 Outlet connection	1	1
8	R120-54B Inlet nut	1	1
9	R120-83 Seat assembly	1	1
10	R195-59B Flowmeter body	1	1
11	R195-73 Washer flowmeter	1	1
12	R230-55 Inlet seat assembly	1	1
	R230-55L Spigot long	1	1
13	R570-66 O'ring	1	1

GAS EQUIPMENT

Regulator

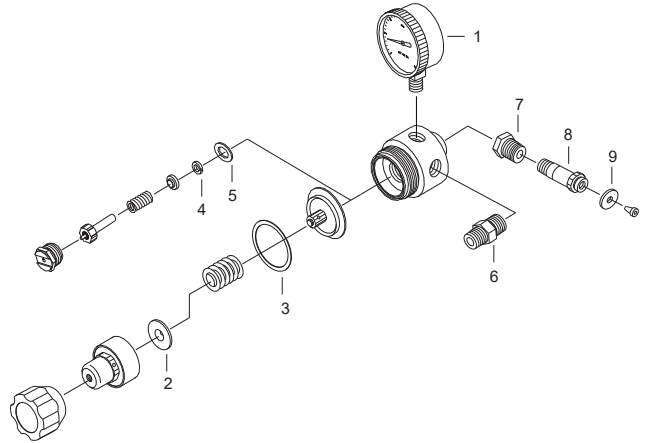
Gentec quality argon regulators and flow meter/ regulators offer real value for money with precision gas flow. 5 cm (2") Gauges for easy reading. Safety back gauges conform to AUST. STD.



Part No.	Description	Pur.	Pk
195WO	Regulator only	1	1
1	R110-06 Spring button	1	1
2	R110-08 Slip ring	1	1
3	R110-37 Friction washer	1	1
4	R110-38 Nozzle gasket	1	1
5	R120-51 Outlet connection	1	1
6	R120-54B Inlet nut	1	1
7	R120-83 Seat assembly	1	1
8	R230-55 Inlet seat assembly	1	1
	R230-55L Spigot long	1	1
9	R570-66 O'ring	1	1

Regulator LPG

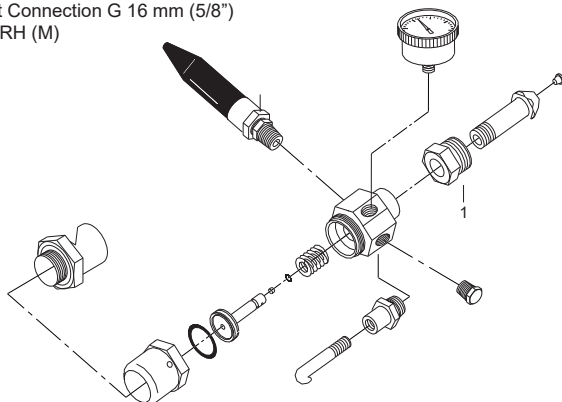
- Rear entry suits most LPG cylinders
- Delivery Pressure 1~280 KPA
- Delivery Flow 300 LPM
- Inlet Connection pol type
- Outlet Connection 16 mm (5/8") - 18 LH (M)
- Conforms to AS 4267



Part No.	Description	Pur.	Pk
210PIB-IW	Regulator LPG rear entry	1	1
1	G20-300P Gauge	1	1
2	R110-06 Spring button	1	1
3	R110-08 Slip ring	1	1
4	R110-37 Friction washer	1	1
5	R110-38 Nozzle gasket	1	1
6	R110-51 Outlet connection	1	1
7	R110-54IW Inlet nut L/H pol threaded	1	1
8	R230-55 Inlet seat assembly	1	1
	R230-55L Spigot long	1	1
9	R570-66 Nipple o'ring	1	1

Regulator Balloon

- Hand tighten nut
- Max Inlet Pressure 20,000 KPA
- Inlet Gauge 28,000
- Inlet Connection G 16 mm (5/8") -14 RH (M)

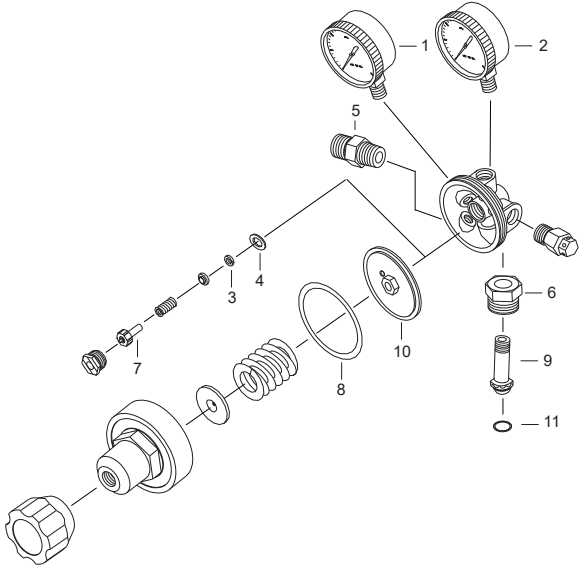


Part No.	Description	Pur.	Pk
230GA-IW	Regulator balloon	1	1
1	R120-54B Inlet nut	1	1

GAS EQUIPMENT

Regulator Acetylene

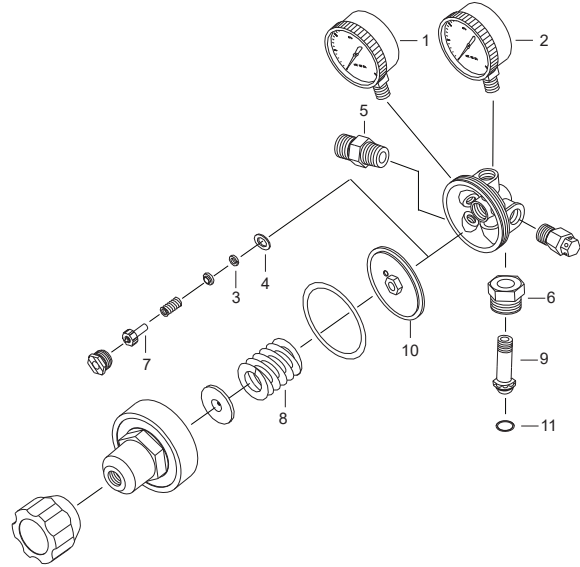
452 regulators designed for medium to heavy duty gas demand. Stem-type seat assembly HP relief valve on oxygen regulator sintered bronze inlet filter. 5 cm (2") gauges for easy reading. Safety back gauges conform to AUST. STD.



Part No.	Description	Pur.	Pk
452Y-IW	Regulator acetylene	1	1
1	G20-300A LP Gauge	1	1
2	G20-4000A HP Gauge	1	1
3	R110-37 Friction washer	1	1
4	R110-38 Nozzle gasket	1	1
5	R110-51 Out connection	1	1
6	R110-54B Left hand inlet nut	1	1
7	R130-83 Seat assembly	1	1
8	R230-08 Slip ring	1	1
9	R230-55 Inlet seat assembly	1	1
	R230-55L Spigot long	1	1
10	R230-82 Diaphragm assembly	1	1
11	R570-66 Nipple o'ring	1	1

Regulator Oxygen

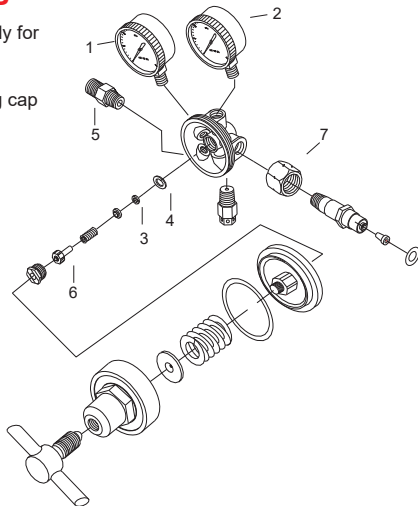
452 regulators designed for medium to heavy duty gas demand. Stem-type seat assembly. HP relief valve on oxygen reg sintered bronze inlet filter. 5 cm (2") gauges for easy reading. Safety back gauges conform to AUST. STD.



Part No.	Description	Pur.	Pk
452X-IW	Regulator oxygen	1	1
452X-175-IW	Regulator oxygen 175 PSI	1	1
1	G20-1000A LP Gauge	1	1
2	G20-30000A HP Gauge	1	1
3	R110-37 Friction washer	1	1
4	R110-38 Nozzle gasket	1	1
5	R120-51 Outlet connection	1	1
6	R120-54B Inlet nut	1	1
7	R120-83 Seat assembly	1	1
8	R230-08 Slip ring	1	1
9	R230-55 Inlet seat assembly	1	1
	R230-55L Spigot long	1	1
10	R240-82 Diaphragm assembly	1	1
11	R570-66 Nipple o'ring	1	1

Regulator Nitrogen

- Stem type seat assembly for more reliable seating
- Forged brass body
- Chrome-plated housing cap
- Self re-seating external pressure relief valve
- UL listed



Part No.	Description	Pur.	Pk
452N-450	Regulator nitrogen	1	1
1	G20-600 Gauge	1	1
2	G20-4000 Gauge	1	1
3	R110-37 Friction washer	1	1
4	R110-38 Sealing washer	1	1
5	R120-51 Outlet stem	1	1
6	R120-83 Seal assembly	1	1
N/S	R452N-55 Inlet stem	1	1
7	R452N-57 Inlet nut	1	1

GAS EQUIPMENT

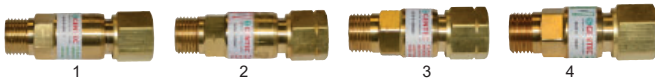
CO2 Heater

The most economical thermostatic controlled CO2 Heater, designed to prevent CO2 regulator freeze-up. Extends life of regulator/flowmeter and prevents porosity in welds from loss of shield gas in frozen regulator.



Part No.	Description	Pur.	Pk
1	CO2-A120V 120V CO ² heater	1	1
	CO2-A240V 240V CO ² heater	1	1
2	CO2 NIPPLE CO ² Heater nipple	1	1
3	R190-57A CO ² Nut	1	1
4	W8 CO ² Heater nylon washer	1	1

Flashback Arrestor



- Avoids dangerous gas mixtures by a gas non-return valve.
- Stops flashback through flame arrestor.
- A dust filter protects the gas non-return valve against contamination.

Part No.	Description	Pur.	Pk
1	FA3RO-BAM Flashback arrestor reg oxy	1	1
2	FA3RF-BAM Flashback arrestor reg fuel	1	1
3	FA3TF-BAM Flashback arrestor torch fuel	1	1
4	FA3TO-BAM Flashback arrestor torch oxy	1	1

Gooseneck

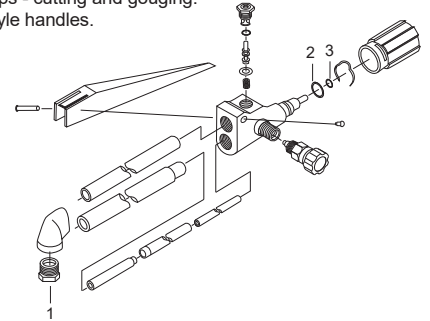


Part No.	Description	Pur.	Pk
FTGN24	Gooseneck stainless steel 61 cm (24")	1	1
FTSN18	Gooseneck stainless steel 46 cm (18")	1	1

Cutting Attachment



- Made from high quality material to exacting standards.
- Multi type gas mixing, suits oxy /acet-oxy/ lpg-oxy/ ng.
- Positive cutting stream control.
- Type 41 and type 44 tips - cutting and gouging.
- Hand fitting to 346T style handles.
- Industry compatible.



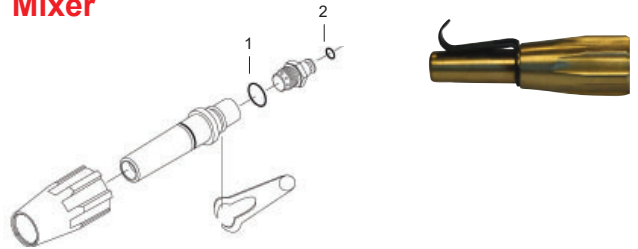
Part No.	Description	Pur.	Pk
346CA	Cutting attachment	1	1
1	T346-01 Tip nut	1	1
2	T346-17 O'ring large	1	1
3	T346-19 O'ring small	1	1

Torch Handle



Part No.	Description	Pur.	Pk
346T	Torch handle	1	1

Mixer



Part No.	Description	Pur.	Pk
372M	Mixer	1	1
1	T346-17 O'ring large	1	1
2	T346-19 O'ring small	1	1

Guide



Part No.	Description	Pur.	Pk
SC15	Stable cut 375 mm (15") cut cap	1	1
SC24GT	Guide track 2" Stable cut 24"	1	1
SC36GT	Guide track 38" Stable cut 36"	1	1
SC48GT	Guide track 50" Stable cut 48"	1	1

GAS EQUIPMENT

Expansion Burner



Part No.	Description	Pur.	Pk
2EB	50 mm (2") Expansion burner	1	1
3EB	75 mm (3") Expansion burner	1	1

LPG Burner



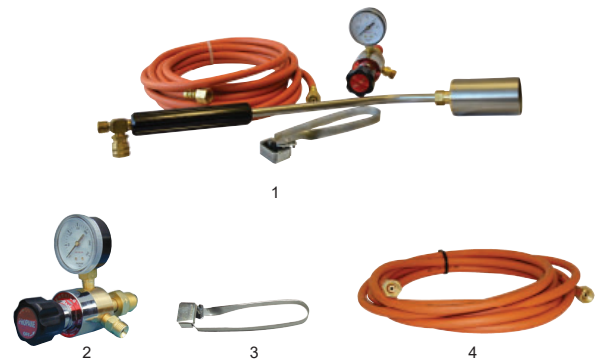
Part No.	Description	Pur.	Pk
LGPB38	38 mm (1.5") LPG burner	1	1
LGPB50	50 mm (2") LPG burner	1	1
LGPB62	62 mm (2.5") LPG burner	1	1

Expansion Burner Kit



Part No.	Description	Pur.	Pk	
1	2EBKIT	50 mm (2") Expansion burner kit	1	1
	2EBKIT10M	50 mm (2") Expansion burner kit 10 m	1	1
	3EBKIT	75 mm (3") Expansion burner kit	1	1
2	210PIB-IW	Regulator	1	1
3	4501	3 Flint lighters	10	10
4	EBH	Handle	1	1
5	EBV	Valve	1	1
n/s	EBHV	Expansion burner handle valve	1	1
6	5MLPG	5 m (15') Single LPG hose	1	1
	10MLPG	10 m (33') Single LPG hose	1	1

LPG Burner Kit



Part No.	Description	Pur.	Pk	
1	LGPBKIT	50 mm (2") LPG burner kit	1	1
	LGPBKIT38	38 mm (1.3") LPG burner kit	1	1
2	210PIB-IW	Regulator	1	1
3	4501	3 Flint lighters	10	10
4	5MLPG	5 m (15') Single LPG hose	1	1

LPG Power Burner



Part No.	Description	Pur.	Pk
LGPB/38MM	Power burner LPG with 38 mm (1.5") burner	1	1
LGPB/62MM	Power burner LPG with 62 mm (2.5") burner	1	1
LGPB	Power burner LPG with 50 mm (2") burner	1	1

GAS EQUIPMENT

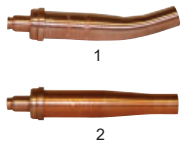
Type 41 Cutting Tip



- 2 Seat Oxygen / Acetylene Cutting
- Tip Type 41
- Larger surface area
- Seat Protector
- Made in USA

Part No.	Description	Pur.	Pk
FT41-6	Size 6	1	1
FT41-8	Size 8	1	1
FT41-12	Size 12	1	1
FT41-15	Size 15	1	1
FT41-20	Size 20	1	1
FT41-24	Size 24	1	1
FT41-32	Size 32	1	1

Type 41 Gouging Tip



Part No.	Description	Pur.	Pk
1 FT41-32GB	Size 32 bent	1	1
FT41-48GB	Size 48 bent	1	1
2 FT41-32GS	Size 32 straight	1	1
FT41-48GS	Size 48 straight	1	1

Type 44 High Speed Cutting Tips



Part No.	Description	Pur.	Pk
FT44-6HS	Size 6	1	1
FT44-8HS	Size 8	1	1
FT44-12HS	Size 12	1	1
FT44-15HS	Size 15	1	1
FT44-20HS	Size 20	1	1
FT44-32HS	Size 32	1	1

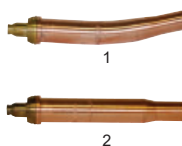
Type 44 Cutting Tip



- 2 Seat Oxygen / Fuel gas, LPG Cutting Tip Type 44
- High speed machine tips available
- Seat protector
- Made in USA

Part No.	Description	Pur.	Pk
FT44-6	Size 6	1	1
FT44-8	Size 8	1	1
FT44-12	Size 12	1	1
FT44-15	Size 15	1	1
FT44-20	Size 20	1	1
FT44-24	Size 24	1	1
FT44-32	Size 32	1	1

Type 44 Gouging Tip



Part No.	Description	Pur.	Pk
1 FT44-32GB	Size 32 bent	1	1
FT44-48GB	Size 48 bent	1	1
2 FT44-32GS	Size 32 straight	1	1
FT44-48GS	Size 48 straight	1	1

Type 44 Scrapper Tips



Scrapper cutting tips are of a new design to increase productivity. The heavy duty design assures safety, more productive cutting, extremely long tip life and economy of use.

Part No.	Description	Pur.	Pk
C-SCRAP24	Size 24	1	1
C-SCRAP32	Size 32	1	1
C-SCRAP38	Size 38	1	1
C-SCRAP48	Size 48	1	1

Harris Style Scrapper Tips



Scrapper cutting tips are of a new design to increase productivity. The heavy duty design assures safety, more productive cutting, extremely long tip life and economy of use.

Part No.	Description	Pur.	Pk
	Size 2	1	1
H-SCRAP4	Size 4	1	1
H-SCRAP6	Size 6	1	1
H-SCRAP8	Size 8	1	1
H-SCRAP9	Size 9	1	1

Harris Style ACET Cutting Tip



Part No.	Description	Pur.	Pk
FT6290AC-0	Size 0	1	1
FT6290AC-1	Size 1	1	1
FT6290AC-2	Size 2	1	1
FT6290AC-3	Size 3	1	1
FT6290AC-5	Size 5	1	1

Harris Style Natural Gas & Propane



Part No.	Description	Pur.	Pk
1 FT6290-00NX	Size 00	1	1
FT6290-0NX	Size 0	1	1
FT6290-1NX	Size 1	1	1
FT6290-2NX	Size 2	1	1
FT6290-3NX	Size 3	1	1
FT6290-4NX	Size 4	1	1
FT6290-5NX	Size 5	1	1
FT6290-6NX	Size 6	1	1
FT6290-8NH	Size 8	1	1
2 FT6290VVC-0	Size 0	1	1
FT6290VVC-1	Size 1	1	1
FT6290VVC-2	Size 2	1	1
FT6290VVC-4	Size 4	1	1

Part No.	Description	Pur.	Pk
FHTN-1	Harris style tip nut	1	1

GAS EQUIPMENT

Koike Style ACET High Capacity 3 Seat Tip



Part No.	Description	Pur.	Pk
GK1-00	0-5 mm (1/8") Cutting capacity (102D7-00)	1	1
GK1-1	10-15 mm (1/2") Cutting capacity (102D7-1)	1	1
GK1-2	15-30 mm (3/4"-1") Cutting capacity (102D7-2)	1	1
GK1-3	30-40 mm (1 1/2") Cutting capacity (102D7-3)	1	1
GK1-4	40-50 mm (2") Cutting capacity (102D7-4)	1	1
GK1-5	50-100 mm (2 1/2") Cutting capacity (102D7-5)	1	1
GK1-6	100-150 mm (4"-5") Cutting capacity (102D7-6)	1	1

Koike Style ACET Standard 3 Seat Tip



Part No.	Description	Pur.	Pk
GO2-00	0-5 mm (1/8") Cutting capacity (102-00)	1	1
GO2-0	5-10 mm (1/4") Cutting capacity (102-0)	1	1
GO2-1	10-15 mm (1/2") Cutting capacity (102-1)	1	1
GO2-2	15-30 mm (3/4"-1") Cutting capacity (102-2)	1	1
GO2-3	30-40 mm (1 1/2") Cutting capacity (102-3)	1	1
GO2-4	40-50 mm (2") Cutting capacity (102-4)	1	1
GO2-5	50-100 mm (2 1/2") Cutting capacity (102-5)	1	1
GO2-6	100-150 mm (4"-5") Cutting capacity (102-6)	1	1

Koike Style LPG High Capacity 3 Seat Tip



Part No.	Description	Pur.	Pk
GK3-00	0-5 mm (1/8") Cutting capacity (106D7-00)	1	1
GK3-0	5-10 mm (1/4") Cutting capacity (106D7-0)	1	1
GK3-1	10-15 mm (1/2") Cutting capacity (106D7-1)	1	1
GK3-2	15-30 mm (3/4"-1") Cutting capacity (106D7-2)	1	1
GK3-3	30-40 mm (1 1/2") Cutting capacity (106D7-3)	1	1
GK3-4	40-50 mm (2") Cutting capacity (106D7-4)	1	1
GK3-5	50-100 mm (2 1/2") Cutting capacity (106D7-5)	1	1
GK3-6	100-150 mm (4"-5") Cutting capacity (106D7-6)	1	1

Koike Style LPG Standard 3 Seat Tip



Part No.	Description	Pur.	Pk
GO3-00	0-5 mm (1/8") Cutting capacity (106-00)	1	1
GO3-0	5-10 mm (1/4") Cutting capacity (106-0)	1	1
GO3-1	10-15 mm (1/2") Cutting capacity (106-1)	1	1
GO3-2	15-30 mm (3/4"-1") Cutting capacity (106-2)	1	1
GO3-3	30-40 mm (1 1/2") Cutting capacity (106-3)	1	1
GO3-4	40-50 mm (2") Cutting capacity (106-4)	1	1
GO3-5	50-100 mm (2 1/2") Cutting capacity (106-5)	1	1
GO3-6	100-150 mm (4"-5") Cutting capacity (106-6)	1	1

OXY/ACET Tips



Part No.	Description	Pur.	Pk
372W-6	Size 6	1	1
372W-8	Size 8	1	1
372W-10	Size 10	1	1
372W-12	Size 12	1	1
372W-15	Size 15	1	1
372W-20	Size 20	1	1

LPG/OXY Heating & Welding Tips



Part No.	Description	Pur.	Pk
554-8	Size 8	1	1
554-10	Size 10	1	1
554-12	Size 12	1	1
554-15	Size 15	1	1
554-20	Size 20	1	1

Cox Reel - Twin Hose



Part No.	Description	Pur.	Pk
1	CROA Oxy/Acet Bare	1	1
2	CR237-1 Hose Guard	1	1
3	CR633 Hose Stop	1	1
4	CR15720 Swing Bracket - Crinkle Black	1	1
5	CR15721 Swivel Bracket	1	1
N/S	CROA20M Oxy/Acet Hose 20m	1	1

GAS EQUIPMENT

ACET Hose



Part No.	Description	Pur.	Pk
ACET5-100	5 mm (3/16") Single acetylene hose - red	100 MT	100 MT

Argon Hose



Part No.	Description	Pur.	Pk
ARG5-100	5 mm (3/16") Single argon hose - black	100 MT	100 MT

LPG Hose



Part No.	Description	Pur.	Pk
LPG5-100	5 mm (3/16") Single LPG hose - orange	100 MT	100 MT
LPG10-100	10 mm (3/8") Single LPG hose - orange	100 MT	100 MT

LPG / OXY Hose



Part No.	Description	Pur.	Pk
LPG5/OXY 5-100	5 mm (3/16") LPG oxygen hose	100 MT	100 MT
LPG10/OXY 10-100	10 mm (3/8") LPG oxygen hose	100 MT	100 MT

OXY Hose



Part No.	Description	Pur.	Pk
OXY5-100	5 mm (3/16") Single oxygen hose - blue	100 MT	100 MT
OXY10-100	10 mm (3/8") Single oxygen hose - blue	100 MT	100 MT

Twin Hose OXY Acetylene



Part No.	Description	Pur.	Pk
AS/OA5-100	5 mm (3/16") Twin hose	100 MT	100 MT
AS/OA10-100	10 mm (3/8") Twin hose	100 MT	100 MT

Argon Hose



Part No.	Description	Pur.	Pk
ARG5-10	5 mm (3/16") Argon hose with fittings	10 MT	10 MT
ARG5-30	5 mm (3/16") Argon hose with fittings	30 MT	30 MT

OXY / ACET Gas Hose Cut Lengths Assembly



Part No.	Description	Pur.	Pk
AS/OA5MM-5	5 m (15') Cut & coupled 5 mm (3/16") oxy/acet assembly	1	1
AS/OA5MM-10	10 m (33') Cut & coupled 5 mm (3/16") oxy/acet assembly	1	1
AS/OA5MM-15	15 m (50') Cut & coupled 5 mm (3/16") oxy/acet assembly	1	1
AS/OA5MM-20	20 m (65') Cut & coupled 5 mm (3/16") oxy/acet assembly	1	1
AS/OA5MM-30	30 m (100') Cut & coupled 5 mm (3/16") oxy/acet assembly	1	1
AS/OA10MM-10	10 m (33') Twin 10 mm oxy/acet hose	1	1

OXY / LPG Gas Hose Cut Lengths Assembly



Part No.	Description	Pur.	Pk
LPG5/OXY5MM-5	5 m (15') Cut & coupled 5 mm (3/16") oxy/LPG assembly	1	1
LPG5/OXY5MM-10	10 m (33') Cut & coupled 5 mm (3/16") oxy/LPG assembly	1	1
LPG5/OXY5MM-15	15 m (50') Cut & coupled 5 mm (3/16") oxy/LPG assembly	1	1
LPG5/OXY5MM-20	20 m (65') Cut & coupled 5 mm (3/16") oxy/LPG assembly	1	1

Single LPG Hose Assembly



Part No.	Description	Pur.	Pk
5MLPG	5 m (15') Single LPG hose	1	1
10MLPG	10 m (33') Single LPG hose	1	1
15MLPG	15 m (50') Single LPG hose	1	1

GAS EQUIPMENT

ACET Gas Hose suits Gas Champ



Part No.	Description	Pur.	Pk
ACET600	600 mm (24") Acet hose red	1	1
ACET600S	600 mm (24") Acet hose red with small fitting	1	1

Hose Ferrule Gas Fittings



Part No.	Description	Pur.	Pk
4750	Hose ferrule 12 mm (1/2")	1	1
F1823	Ferrule 18 x 23 mm (11/16" x 15/16")	1	1
F12723	Ferrule 12.7 x 23 mm (1/2" x 15/16")	1	1

LPG Gas Hose suits Gas Champ



Part No.	Description	Pur.	Pk
LPG600	600 mm (24") LPG hose orange	1	1
LPG600S	600 mm (24") LPG hose orange with small fitting	1	1

Gas Kit Fittings



Part No.	Description	Pur.	Pk
1	LHK-2 Gas kit left hand LHN, NP, 16700011	1	1
	LHK10-2 Gas kit left hand 10 mm hose	1	1
2	RHK-1 Gas kit right hand LHN NP 16700011	1	1
	RHK10-1 Gas kit left hand 10 mm hose	1	1

OXY Gas Hose suits Gas Champ



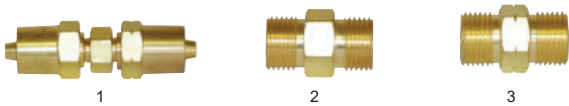
Part No.	Description	Pur.	Pk
OXY600	600 mm (24") Oxygen hose blue	1	1
OXY600S	600 mm (24") Oxygen hose blue with small fitting	1	1

Gas Nut Fittings



Part No.	Description	Pur.	Pk
1	LHN Gas nut left hand	20	20
2	RHN Gas nut right hand	20	20

Coupler Gas Fitting



Part No.	Description	Pur.	Pk
1	IW265 Gas hose coupler 5 mm (3/16")	1	1
2	IW34 Gas hose coupler right hand	10	10
3	IW35 Gas hose coupler left hand	10	10

Left & Right Hand Gas Fittings



Part No.	Description	Pur.	Pk
1	IW240 Gas hose fitting left hand 5 mm (3/16")	1	1
2	IW112 Gas hose fitting right hand 5 mm (3/16")	1	1

Double Ended Barb Gas Fitting



Part No.	Description	Pur.	Pk
DEB	Double ended barb	1	1
DEB10	Double ended bard 10 mm	1	1

Nipple Gas Fittings



Part No.	Description	Pur.	Pk
1	NP Push in nipple 5 mm (3/16")	20	20
	NP10 Nipple 10 mm (3/8") hose	1	1
2	NPL Nipple 5 mm (3/16") hose	10	10

Elbow Gas Fitting



Part No.	Description	Pur.	Pk
ELBO	Gas elbow - pair	1	1

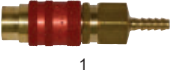
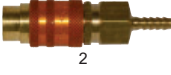

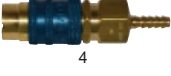


Nut & Nipple Gas Fitting



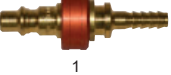

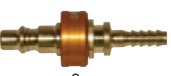
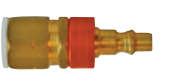




Part No.	Description	Pur.	Pk
1/4GAS	Nut & nipple 6 mm (1/4")	1	1

GAS EQUIPMENT

Quick Connect Fittings Coupled

	Part No.	Description	Pur.	Pk
	1 10-171-1021	Coupling 4.7 mm (3/16") hose acetylene red	1	1
	2 10-172-1001	Coupling 4.7 mm (3/16") hose LPG orange	1	1
	3 10-172-1706	Coupling 9.5 mm (3/8") hose LPG orange	1	1
	4 10-181-1021	Coupling 4.7 mm (3/16") hose oxygen blue	1	1
	10-181-1024	Coupling 9.5 mm (3/8") hose oxygen blue	1	1
	5 10-181-1726	Coupling 15.8 mm (5/8") hose oxygen blue	1	1

Quick Connect Fittings Nipple

	Part No.	Description	Pur.	Pk
	1 10-171-5001	Nipple 4.7 mm (3/16") hose acetylene red	1	1
	2 10-171-5776	Nipple 15.8 mm (5/8") hose acetylene red	1	1
	3 10-172-5001	Nipple 4.7 mm (3/16") hose LPG orange	1	1
	10-172-5004	Nipple 9.5 mm (3/8") hose LPG orange	1	1
	4 10-172-5706	Nipple 15.8 mm (5/8") hose LPG orange	1	1
	5 10-181-5001	Nipple 4.7 mm (3/16") hose oxygen blue	1	1
	10-181-5004	Nipple 9.5 mm (3/8") hose oxygen blue	1	1
	6 10-181-5726	Nipple 15.8 mm (5/8") hose oxygen blue	1	1

Gas Fitting Adaptor

NO IMAGE AVAILABLE

Part No.	Description	Pur.	Pk
IW91658L	Adaptor 9/16-5/8 gas fittings	1	1
IW91658R	Adaptor 9/16-5/8 gas fittings	1	1

Quick Connect Fittings Attaco/Mini



Part No.	Description	Pur.	Pk
AO24620	Quick disconnect small attaco	1	1

Quick Connect Fittings Attaco/Mini Male



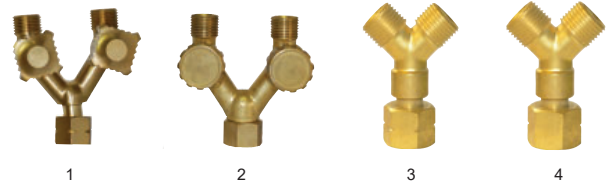
Part No.	Description	Pur.	Pk
1 W000141831	Attaco gas tig	1	1
2 B0088AT	Nipple	1	1

Quick Connect Inert Fittings



Part No.	Description	Pur.	Pk
10038768	Quick disconnect standard	1	1
QC5/8RHF	Quick disconnect female 2 5/8 R/H	1	1

Y-Piece Gas Fittings



Part No.	Description	Pur.	Pk
1 Y-ACET	Y Piece with valve left hand	1	1
2 Y-OXY	Y Piece with valve right hand	1	1
3 IWR215	Y Piece LH 16 mm (5/8") - 18UNF	1	1
4 IWR121	Y Piece RH 16 mm (5/8") - 18UNF	1	1

GAS EQUIPMENT

O Clips & Clamps



Part No.	Description	Pur.	Pk
OET0507	5 - 7 mm (3/16" - 1/4")	100	100
OET0709	7 - 9 mm (1/4" - 3/8")	100	100
OET0911	9 - 11 mm (3/8" - 7/16")	100	100
1113	11 - 13 mm (7/16" - 1/2")	100	100
1315	13 - 15 mm (1/2" - 9/16")	100	100
1517	15 - 17 mm (9/16" - 11/16")	100	100
1518	15 - 18 mm (9/16" - 11/16")	100	100
1720	17 - 20 mm (11/16" - 13/16")	100	100
2023	20 - 25 mm (13/16" - 1")	100	100
2327	23 - 27 mm (15/16" - 1 1/16")	100	100
2528	25 - 28 mm (1" - 1 1/8")	100	100
2831	28 - 31 mm (1 1/8" - 1 1/4")	100	100
3437	34 - 37 mm (1 5/16" - 1 7/16")	100	100

Stepless Clamps



- 360° stepless design - no steps or gaps on inner circumference
- Narrow band, concentrated seal compression
- Smooth edged band steel prevents damage to hose
- Light weight
- Tamper detectable design

Part No.	Description	Pur.	Pk
16700001	5.8 - 7 mm (1/4")	100	100
16700002	6.8 - 8 mm (1/4" - 5/16")	100	100
16700003	7 - 8.7 mm (1/4" - 5/16")	100	100
16700004	7.8 - 9.5 mm (5/16" - 3/8")	100	100
16700005	8.3 - 10 mm (5/16" - 3/8")	100	100
16700007	9.6 - 11.3 mm (3/8" - 7/16")	100	100
16700008	10.1 - 11.8 mm (3/8" - 7/16")	100	100
16700009	9.8 - 12.3 mm (3/8" - 1/2")	100	100
16700010	10.8 - 3.3 mm (7/16" - 1/8")	100	100
16700011	11.3 - 13.8 mm (7/16" - 9/16")	100	100
16700013	12 - 14.5 mm (1/2" - 9/16")	100	100
16700016	13.2 - 15.7 mm (1/2" - 5/8")	100	100
16700017	14.5 - 17 mm (9/16" - 11/16")	100	100
16700020	15.3 - 18.5 mm (5/8" - 3/4")	100	100
16700022	16.6 - 19.8 mm (5/8" - 3/4")	100	100
16700024	17.8 - 21 mm (11/16" - 13/16")	100	100
16700026	19.4 - 22.6 mm (3/4" - 7/8")	100	100
16700029	20.9 - 24.1 mm (13/16"-15/16")	100	100
16700033	23.9-27.1 mm (15/16"- 1 1/16")	100	100
16702488	5.3 - 6.5 mm (3/16" - 1/4")	100	100

Tip Cleaners



Wypo tip cleaners are precision manufactured with controlled accurate pressure from high quality stainless steel.

Pliers & Service Kits

Dual purpose pincers allow clamps to be applied or removed in confined spaces with pincers held parallel to hose. Also use as standard pincers.



Part No.	Description	Pur.	Pk
1	1099 Side jaw pincer	1	1
2	SK1099 Two ear clamp kit & pincer	1	1
	167KIT One ear clamp kit & pincer	1	1

3 Flint & Renewals



The 3 Flint Lighters is the toughest spark lighter made and it's designed for the toughest jobs. The 3 flint lighter will easily light any flammable gas.



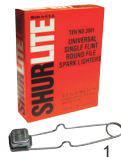
The 3 flint renewals is constructed using a round cup design, and allows the user to replace the flint when necessary, with our renewal flint.



The 3 flint renewals features a round file made with our secret SHURLITE process, and a large hood for trapping flammable gases for easy ignition.

Part No.	Description	Pur.	Pk
1	4501 3 Flint lighters	10	10
	4501B 3 Flint lighters bulk (100 per box)	1	1
2	5012 3 Flint lighters with 4 renewal	1	1
3	5012X 3 Flint renewals CD4	1	1

Single Flint & Renewals



The Single Flint Lighters is capable of lighting any flammable gas. The lighter features a very long life span and provides the lowest cost per ignition of any lighter anywhere.



The flint renewal features a round file, a large square hood for trapping flammable gases for easy ignition, and a wire frame made from a speciality steel which retains it's springiness over the life of the lighter.



The round file renewal is constructed using a round cup design, this allows the user to replace the flint when necessary. It has a strong frame and with three large flints for dependable ignition under all working conditions.

Part No.	Description	Pur.	Pk
1	3001L Single flint lighters (10 per box)	1 BX	1 BX
	3001B Single flint lighters bulk (100 per box)	1 BX	1 BX
2	3001X Single flint renewals (200 per box)	1 BX	1 BX
3	3021 Round file single flint 5 renewal	1	1

Part No.	Description	Pur.	Pk
KWYPO	King Wypo tip cleaners	6	6
WYPO	Wypo tip cleaners	12	12

GAS EQUIPMENT

Welding Cylinder Cart



Popular cylinder truck can be used for gas cylinders up to 300 mm (11 13/16") in diameter or for hauling boxes on 178 x 356 mm (7" x 13 5/8") base plate.
Load capacity: 225 kg



The high rail feature secures tanks on to the cart while moving around job site situations. Full range carts hold one 235 mm (9-1/4") oxygen tank and one 343 mm (13-1/2") acetylene tank.
Equipped with 330 x 630 mm (13" x 24 13/16") base plate and a large, open tray standard equipment.
Includes safety chain



The high rail feature secures tanks on to the cart while moving around job site situations. Full range carts hold one 235 mm (9-1/4") oxygen tank and one 343 mm (13-1/2") acetylene tank.
Equipped with 330 x 630 mm (13" x 24 13/16") base plate and a large, open tray standard equipment.
Includes steel containment bar



Ideal for handling two tanks oxygen tank and a acetylene 235 mm (9-1/4") diameter tank. High rail design contains cylinders while moving about job sites.
This comes with 229 x 457 mm (9" x 18") base plate and a large open tool tray as standard equipment.
Includes steel containment band



5



6

Welding Cylinder Cart



Ideal for handling two tanks oxygen tank and a acetylene 235 mm (9-1/4") diameter tank. High rail design contains cylinders while moving about job sites.
This comes with 229 mm x 457 mm (9" x 18") base plate and a large open tool tray as standard equipment.
• Double containment bars
• Lifting Eye
• Dividing wall



Ideal for handling two tanks oxygen tank and a acetylene 235 mm (9-1/4") diameter tank. High rail design contains cylinders while moving about job sites.
This comes with 229 mm x 457 mm (9" x 18") base plate and a large open tool tray as standard equipment.
• Double containment bars
• Lifting eye
• Fire wall



The high rail feature secures tanks on to the cart while moving around job site situations. Full range carts hold one 235 mm (9-1/4") oxygen tank and one 343 mm (13-1/2") acetylene tank.
Equipped with 330 x 630 mm (13" x 24 13/16") base plate and a large, open tray standard equipment.
• Double containment bars
• Lifting eye
• Fire wall



4



5

Part No.	Description	Pur.	Pk
1 782385	Cylinder cart hd single #112 254 mm (10") solid	1	1
782386	Cylinder cart hd single #112 254 mm (10") pneumatic	1	1
2 782426	Cylinder cart w/ safety chain 209-16p	1	1
782420	Cylinder cart w/ safety chain 209-10s	1	1
3 782483	Cylinder cart w/ steel containment bars #213	1	1
4 782427	Cylinder cart w/ steel containment band #209	1	1
5 779011	Wheel 254 mm (10") semi pneumatic rubber suits 112, 209 series	1	1
6 779027	Wheel 254 mm (10") pneumatic suits 112, 209 series	1	1

Part No.	Description	Pur.	Pk
1 782441	Cylinder cart w/ lifting eye, divider wall & double containment bars #209	1	1
2 782443	Cylinder cart w/ lifting eye, fire wall & double containment bars #209	1	1
3 782495	Cylinder cart w/ lifting eye, fire wall & double containment bars #213	1	1
4 779011	Wheel 254 mm (10") semi pneumatic rubber suits 112, 209 series	1	1
5 779027	Wheel 254 mm (10") pneumatic suits 112, 209 series	1	1

GAS EQUIPMENT

Welding Cylinder Carts



The high rail feature secures tanks on to the cart while moving around job site situations. Full range carts hold one 235 mm (9-1/4") oxygen tank and one 343 mm (13-1/2") acetylene tank. Equipped with 330 x 630 mm (13" x 24 13/16") base plate and a large, open tray standard equipment.

- Double containment bars
- Lifting eye
- Fire wall

Part No.	Description	Pur.	Pk
782491	Cylinder cart w/ lifting eye, fire wall & double containment bars #213	1	1

Welding Cylinder Cart - Size D



Sumner #207 Small - Medium cylinder cart. High rail design contains cylinders while moving about job sites. Carts come with 190 x 394 mm (7.5" x 15.5") base plate.

Part No.	Description	Pur.	Pk
782359	Size D cylinder cart	1	1

Tank Vise



- Helps secure your tanks
- Stabilizes tanks in vehicle during horizontal transport.
- Safely secures tanks to the wall in your shop or business.
- Designed to handle all size cylinders from S to T.
- Includes strap with buckle attachment.
- Hardware included

Part No.	Description	Pur.	Pk
TV1	Tank vise	1	1

Welding Cylinder Carts



- 3 wheel trolley offer stability & safety for the worker.
- Holds 2 cylinders
- Lockable container for tools
- Lockable castor
- 355 mm (14") solid rubber wheels
- Load capacity of 200 kgs (440 lbs)
- Weight 26.4 kgs
- H x W x Base 99.5 x 33 x 63.5 cm
- Flat packed

1



- Holds 2 cylinders
- Lockable container for tools
- 405 mm (16") Flat free wheels
- Load capacity of 200 kgs (440 lbs)
- Weight 23.1 kgs
- H x W x Base 115.5 x 33 x 63.5 cm
- Flat packed

2



- Mig welding cart
- Load capacity of 90 kgs (200 lbs)
- Weight: 15.8 kgs

3

Part No.	Description	Pur.	Pk
1	AFTILTT Cylinder cart tilt 3 wheels	1	1
2	AFCC Cylinder cart	1	1
3	AF190T Cart Mig F type	1	1